



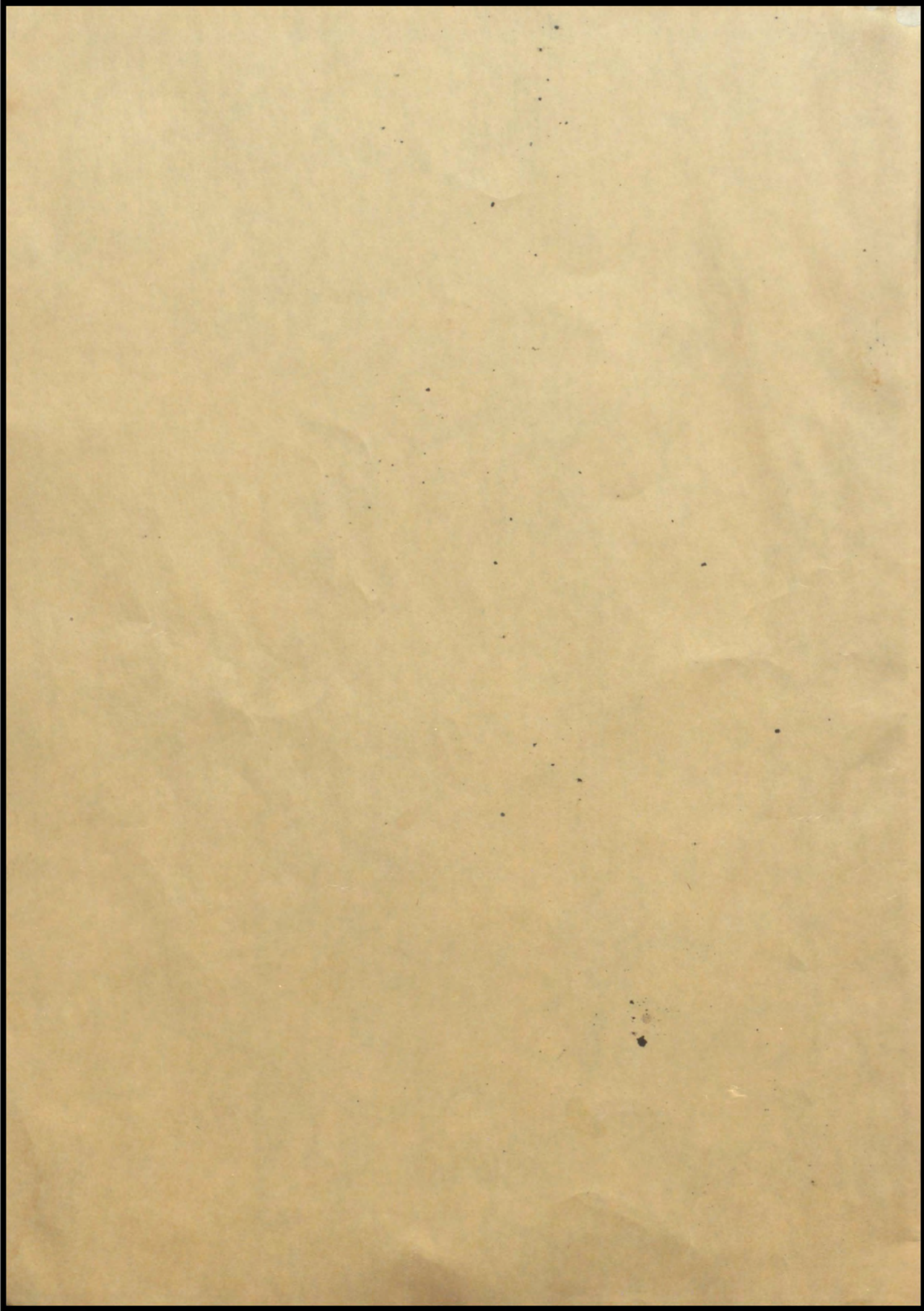
—THE—
PETOSEGAN

Construction



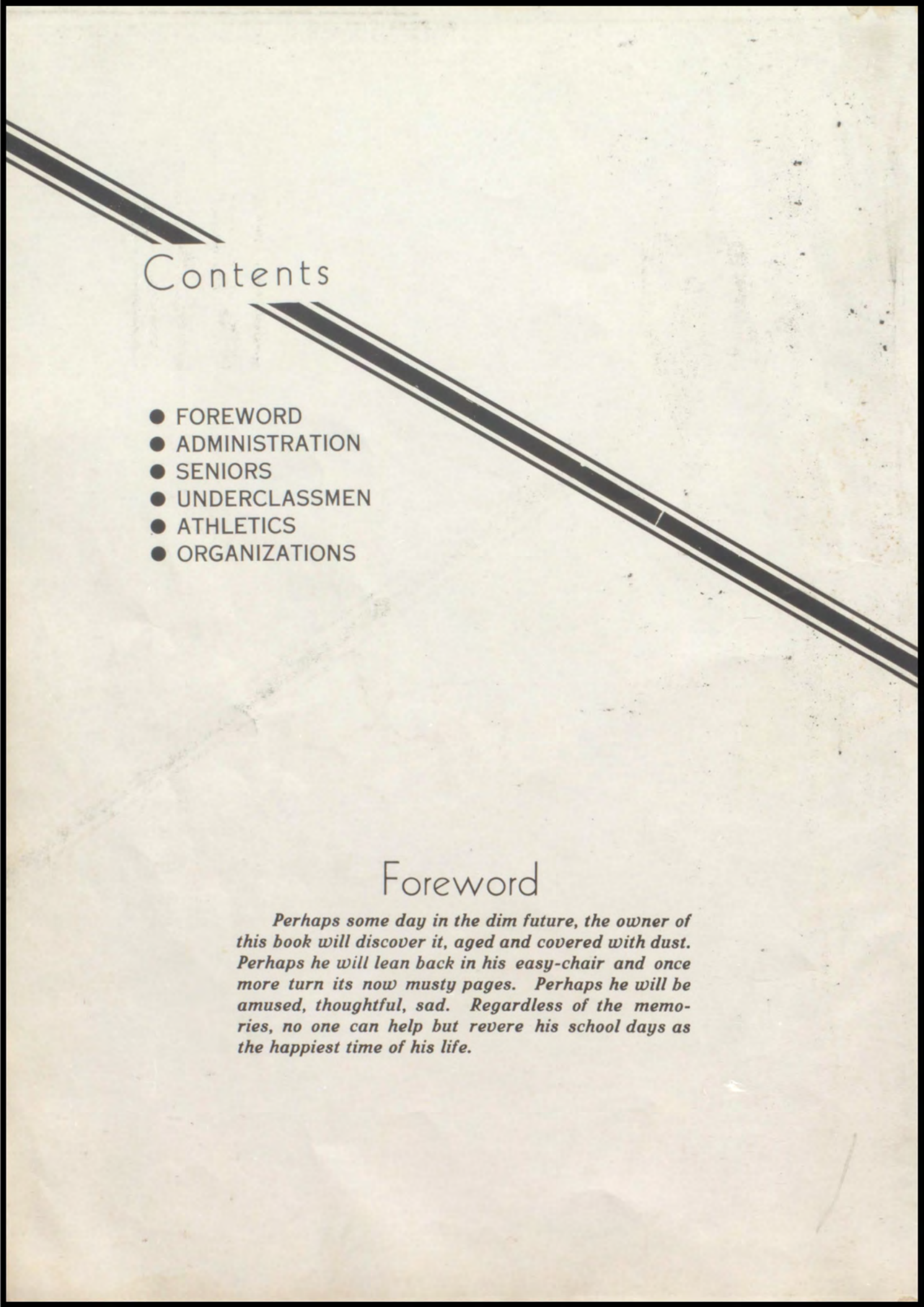








Ex-Libris

A decorative graphic consisting of two parallel diagonal lines, one solid black and one white, crossing the page from the top-left to the bottom-right. The word "Contents" is centered between these lines.

Contents

- FOREWORD
- ADMINISTRATION
- SENIORS
- UNDERCLASSMEN
- ATHLETICS
- ORGANIZATIONS

Foreword

Perhaps some day in the dim future, the owner of this book will discover it, aged and covered with dust. Perhaps he will lean back in his easy-chair and once more turn its now musty pages. Perhaps he will be amused, thoughtful, sad. Regardless of the memories, no one can help but revere his school days as the happiest time of his life.

1940



Petosegan

Volume Eleven

Published by the
SENIOR CLASS of
Petoskey High School

Jim Doherty
Bill Zipp

Editor-in-Chief
Business Manager





Dedication

*In grateful acknowledgment of her services both
to us and the school as a helpful friend and a guiding
adviser, we dedicate this 1940 Petosegan to*

Miss Annabell Lombard



To the members of the Senior Class, and particularly to Mr. McDonald and the Annual Staff, I extend my sincere congratulations. Your 1940 Petosegan portrays the activities of our school in a most adequate manner. I know it has been a very pleasant and profitable undertaking for all who have contributed in any way in preparing this publication. May this Petosegan remind us of the pleasant experiences we have shared.

*H. C. Spidler, A. B. M. A.
superintendent*

Administration

The appearance of the 1940 Petosegan heralds the close of another successful school year at Petoskey High School. The Class of 1940 is unique in the number of its accomplishments, and the fact that it is the largest graduating class in the history of the school. The members of the class, the Annual Staff, and Mr. McDonald, the faculty sponsor, are to be congratulated on the splendid publication which has been built this year. It will be cherished by us all as a memorial of a happy and profitable year which we have spent together.

*F. S. Jacobs, A. B. M. A.
principal*



Lynn Bartlett

A. B.
Chemistry
Mathematics
Ass't Coach



Nellie Beebe

A. B., M. A.,
Latin
French



Ruth Bergeman

B. A.
English

Linford S. Bond

A. B., M. S.,
Physics
Mathematics

Jessie Hawley Cribbs

A. B.
English
Social Science

Ruth Crothers

Ph. B.
English
Library

Alice L. Farnsley

A. B.
English
Latin
Dramatics

Merrill F. Fink

A. B.,
Social Studies
English

Elza Harner

Secretary to Superintendent

Esther Jarman

Secretary to Principal

Grace Waldo Jessop

A. B.
Opportunity Room

Lloyd W. Johnson

B. S.
Apprentice Training

Nina Lawrence

A. B.
Physical Education

Annabell Lombard

Commercial Department

John F. McDonald

A. B., M. A.,
Social Sciences
Journalism
Vocations

Walter J. MacMillan

B. S.
Physical Education
Civics, Science





Marie S. Nevin
B. S., M. A.,
Mathematics

Frances Pailthorp
Art

Russell I. Roberts
B. S.
Manual Art

Alda T. Rolph
A. B.,
Social Studies
Debate Coach
Speech

Helen M. Ryerse
B. S.
Cafeteria
Home Economics

Fredrick C. Schmoyer
B. M.,
Orchestra
Instrumental
Music, Band

Mary Jane Schreur
A. B.,
Mathematics

Steve Sebo
B. S.
Coach
Physical Education

Dora Silver
Vocal Music

Rosalie A. Stech
A. B.
English
Dramatics

Genevieve Taggett
A. B.,
Biology
Mathematics

T. Arthur Treloar
Manual Arts

Arlene D. Van Ness
A. B.,
History

Catherine Wagner
B. S.,
Home Economics

Catherine Wagner





Seniors



Pauline Behan
Class Secretary

Ralph Ernst
Class President

Winfield Gibson
Class Vice-President

The Class of 1940

This year's Senior Class, the largest in the history of Petoskey High School, was organized in the fall of 1936. The class officers for the freshmen year were Bob Bursian, Maynard Bailey, and Joyce Smith. The class debate team, composed of Bob Brown, Bill Zipp, and Al Linnell, defeated an experienced senior team to become school champions. The outstanding social event for the freshmen year was the class picnic at Young's State Park.

Entering its second year, the class elected Walter Dow president, Lynetta White vice-president, and Helen LaFleur secretary-treasurer. It sponsored a Chinese Hop in the gymnasium which was very well attended, and was considered one of the year's most successful parties. The class track team won the school championship and the inter-class debate team repeated their conquest.

Its junior year having arrived, the class decided on the direction of Jack Zaiger, Bill Miles, and Bette Potts. An uproarious comedy "Fly Away Home", was presented as the junior class production. The class of '40, again copped the track meet and the debate cup. The year was climaxed with the annual J-Hop at the Bay View Country Club. The gym was appropriately decorated with white panels inscribed with the school letters.

As the senior year rolled around, the class began to feel its responsibility in upholding the high standards

set by graduating classes. With due deliberation the classmen designated Ralph Ernst president, Winfield Gibson vice-president, and Pauline Behan secretary-treasurer.

The activities of the class were many and varied. On December 29th, the seniors entertained the alumni in the gymnasium. A committee from the sociology class including Joyce Smith, Henriette Gordon, and Al Linnell took a leading role in a project to stimulate community interest in recreation facilities for young folk. Seniors playing on the basketball team were Ted Garby, captain, Dick Bonsecours, and Roger Weinrich. Senior football lettermen were Ralph Ernst, Fred Zipp, Bill Zipp, Clyde Hall, Ed Stanley, Bob Cooper, Jack Zaiger, and Glen Anys. Lucille Cole edited the school paper throughout the first semester, Lynetta White the second semester. Jim Doherty was elected editor of the Petosegan, Bill Zipp served as business manager, Joyce Smith organization editor, and Henriette Gordon activities editor. Lois Schantz was the able president of the student council.

It is with sincere regret that the of '40 leaves Petoskey High. Their stay here has been pleasant, they have appreciated the training and development received here, but, above all, they realize that an experience which can never be duplicated has been offered.

Valedictorian
Albert Linnell

Salutatorian
Stephany Salisz



UPPER ROW

Glenn Anys

Intramural 1, 2, 3, 4; Football 1, 2, 3, 4; Basketball 2; Baseball 3, 4; Varsity Club 4.

Ferne Athearn

Intramural 1, 2, 3, 4; Dramatics 2, 3; Tennis 3; Candle Club 4; G. A. A. 3.

Maynard Bailey

Class V. Pres. 1; Band 1, 2; Hi-Y 3, 4; Glee Club 1, 2, 3; Chorus 1, 2, 3; Intramural 1, 2; Football 1; Basketball 1; Baseball 1, 2, 3; Varsity Club 4; "Captain of the Guard"; "Norwegian Nights"; Boys' Quintet 2.

Don Bare

Intramural 1, 2, 3, 4; Track 1, 2; Football 3, 4; Toppers Club 4.

LOWER ROW

Erma Bathke

Intramural 1.

Pauline Behan

Class Sec.-Treas. 4; Student Council 3, 4; Hi-Light 4; Petosegan 4; Intramural 1, 2; Candle Club 3, 4; G. A. A. 2; Honor Society 4.

Dick Bonsecours

(Indian River High School 1, 2); Hi-Y 3, 4; Quill and Scroll (V. Pres. 4); Hi-Light 4; Petosegan 4; Basketball 3, 4; Baseball 3, 4; Varsity Club 4.

Lester Body

(St. Louis High School 1, 2); Glee Club 4.



UPPER ROW

Jean Brown

Glee Club 2, 3; Chorus 2, 3; Intramural 1, 2; "Captain of the Guard"; "Norwegian Nights."

Luke Cahill

(Indian River High School 1, 2); Basketball 3; Baseball 3.

Julia Chew

Intramural 1, 2, 3, 4.

Lucille Cole

Quill and Scroll 4; Hi-Light 3, (Ed.-in-Chief 4); Petosegan 3, 4; Glee Club 1, 3, 4; Chorus 1, 3; Intramural 1, 2, 4; Dramatics 2, 3, 4; G. A. A. 4; "Norwegian Nights"; "Fly Away Home"; "The E. Shop M. Schaves"; Intramural D.acts 1, 2, 4.

LOWER ROW

Mary Jane Collins

(Wilkes-Barre High School, Pennsylvania; Warsaw High School, Indiana, 1, 2, 3); Hi-Light (Man'g.-Ed. 4); Petosegan 4; Glee Club 3, 4; Chorus 3; Dramatics 4; Candle Club 4; "Norwegian Nights"; Girls' Sextet 3, 4; Double Sextet 3; Pep Club 3, 4.

Robert Cooper

Hi-Y 2, 3, 4; Intramural 1, 2; Football 1, 2, 3, 4; Basketball 3, 4; Baseball 1, 2, 3, 4; Varsity Club 4.

Eleanor Coveyou

Intramural 1, 2.

James Craddock

Hi-Y 2, 3, 4; Hi-Light 4; Intramural 1, "Fly Away Home."





UPPER ROW

Evelyn Crawford

Hi-Light 4; Glee Club 2, 4; Intramural 1, 2; "Captain of the Guard."

Josephine Czerkie

Candle Club 3, 4.

Stanley Czerkie

Floyd Dickerson

Track 2, 3; Football 1, 2, 3.

LOWER ROW

Jim Doherty

Band 2; Hi-Y 2, 3, 4; Quill and Scroll 3, (Pres. 4); Hi-Light Sports Editor 3, 4; Petosegan, Ed-in-Chief 4; Intramural 1, 2; Honor Society 4; Faculty News 4.

Rose Dombroski

Hi-Light 4; Glee Club 1, 4; Intramural 1, 2; Dramatics 4; Petosegan 4.

Evelyn Duley

Intramural 1, 2, 3.

Helen Duley

Glee Club 4.

UPPER ROW

Ralph Ernst

(Newberry High School; Sault High School, 1, 2); Class Pres. 4; Hi-Y 3, 4; Student Council 4; Glee Club 4; Intramural 4; Football 3, 4; Basketball 3; Varsity Club 3, 4; Boys' Quintet 4; Pep Club 3, 4; "The Bishop Misbehaves"; Honor Society 4.

Eleanor Fettig

Student Council 2; Glee Club 1; Intramural 1, 2; Toppers Club 4.

Ray Fochtman

Band 1, 2, 3, 4; Orchestra 1, 2, 3, 4; Hi-Light 3; Petosegan 4; Glee Club 3, 4; Chorus 4; Brass Sextet 2, 3, 4; A Capella Choir 4; Art Club 3, 4.

Audrey Fox

Quill and Scroll 4, (Sec.-Treas.); Hi-Light 4; Intramural 1; Girl Reserves 2, (Historian Council 3); (Secretary Council 4); Art 1; Faculty News 4; Petosegan 4.

LOWER ROW

Ted Garby

(Indian River High School 1, 2); Hi-Y 3, 4; Basketball 3, 4; Baseball 3, 4; Varsity Club 3, 4.

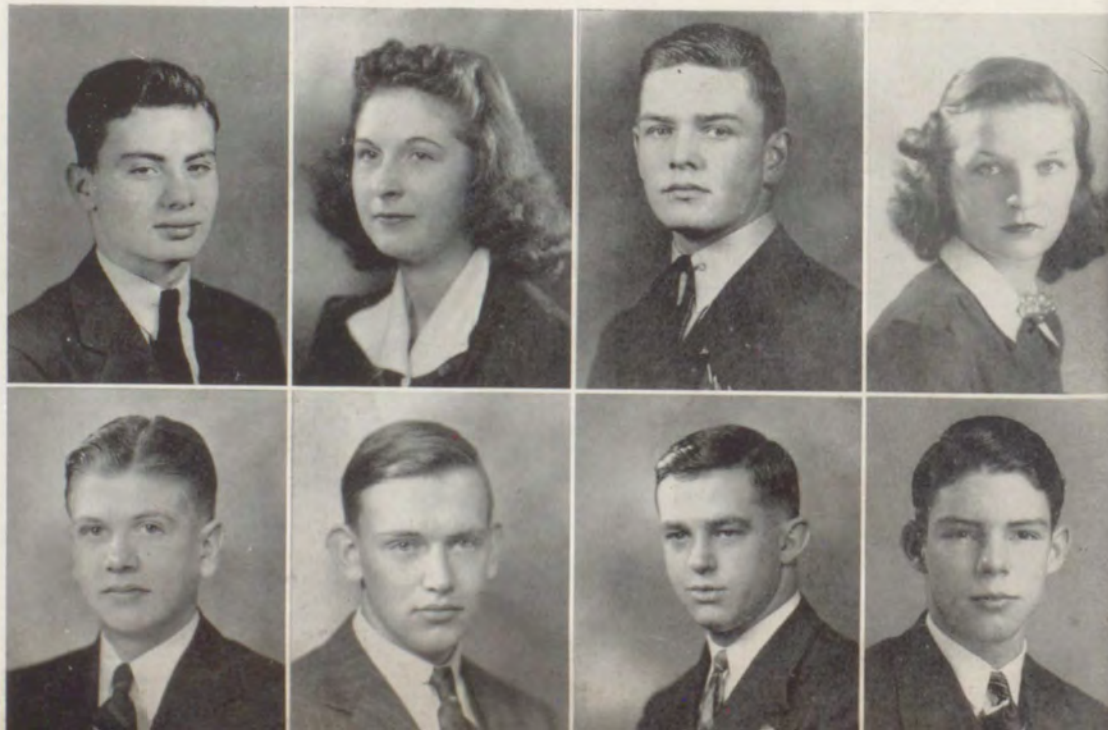
Jack Garringer

Robert Gibson

Chorus 3; Intramural 1, 2; Track 1, 2, 3, 4; Dramatics 4; Football 3, 4; "Fly Away Home"; "The Bishop Misbehaves."

Winfield Gibson

(Greenville High School, Tenn. 1, 2; Litton High School 3); Class V.-Pres. 4; Student Council 4; Intramural 4.



UPPER ROW

Celia Goerke

(Indian River High School 1, 2);
Hi-Light 4, (Bus. Mgr.); Petosegan
4; Quill and Scroll 4; Honor
Society 4; Intramural 3, 4.

Rolland Gokee

Intramural 1, 2, 3.

Mildred Goodrich

Henriette Gordon

Band 4; Orchestra 3, 4; Petosegan
4; Glee Club 2; Chorus 4; Dramat-
ics 4; (Pres.); Girl Reserves 4;
Honor Society 4; Declamation 2.

LOWER ROW

Frances Gregg

Intramural 1, 2.

Gladys Grimes

(Commerce High School, Oklahoma
1, 2); Chorus 4; Dramatics 4;
Toppers Club 4.

Wayne Grossman

Hi-Y 4; Student Council 4; Intra-
mural 1, 2, 3, 4; Baseball 2, 3, 4;
Toppers Club 4.

Stanley Guzniczak

(Boyne City High School 1, 2); In-
tramural 3.



UPPER ROW

Clyde Hall

Intramural 1, 2, 3, 4; Track 1, 2,
3, 4; Football 2, 3, 4; Varsity Club
3, 4.

Betty Hand

Hi-Light 4; Glee Club 1; Chorus
1; Toppers Club 4; Quill and Scroll
4.

Paul Hazelton

Hi-Y 1, 2, 3, (Pres. 4); Glee Club
4; Chorus 4; Intramural 1, 2, 3, 4;
Tennis 3, 4; A Capella Choir 4;
Intramural Debate 2; "The Bishop
Misbehaves."

John Hess

Band 2; Orchestra 1, 2, 3, 4; In-
tramural 1, 2, 3, 4; Baseball 2, 3;
"Captain of the Guard"; Toppers
Club 4.

LOWER ROW

Mary Hoffer

Band 1, 2, 3, 4; Intramural 1, 4;
Grl Reserves 2, 3; (Treas. Coun-
cil 4); Art 1.

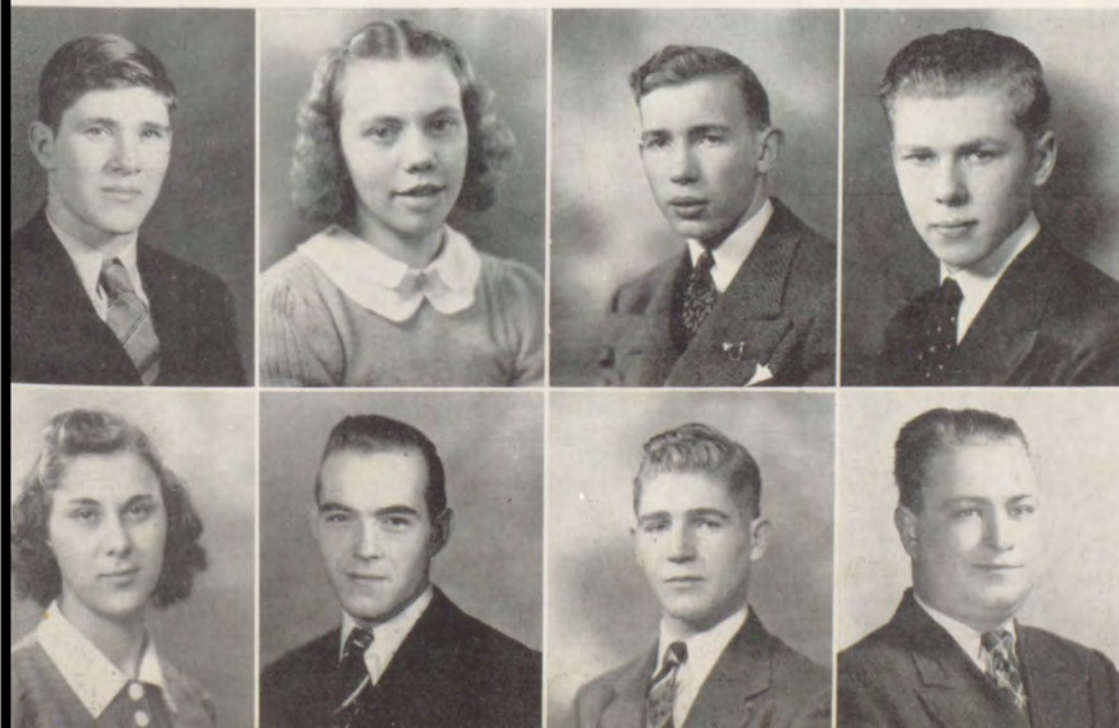
Herbert Hopper

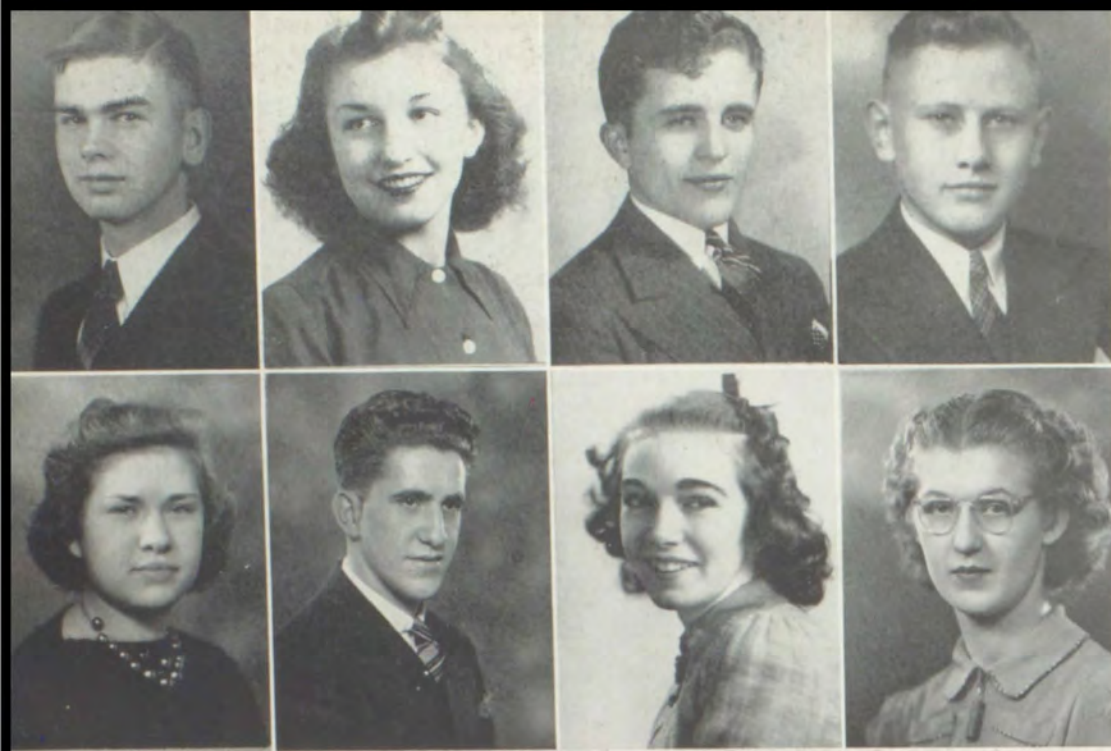
(Clearwater High School, Florida
2); Band 1; Petosegan 4; Intra-
mural 4; Football 1, 3, 4; Basket-
ball 1, 3; Baseball 3; Toppers Club
4; "The Bishop Misbehaves."

William Hopper

Intramural 1, 2; Track 1, 2; Dra-
matics 2.

Clarence Jodway





UPPER ROW

John Johannsen
Intramural 2; Track 3.

Louise Johnson
Band 1; Orchestra 1; Hi-Light 4;
Glee Club 1, 2, 3, 4; Chorus 1, 2;
Intramural 1, 2; Girl Reserves 1,
2, 3, 4; G. A. A. 1, 2; "Captain
of the Guard."

Wilbert Kage

Ed Keating
Student Council 3; Intramural 1, 2.

LOWER ROW

Jo Kerwin
Intramural 1, 2, 3, 4; Toppers Club
(Treas. 4).

Richard Krusell
Intramural 3, 4; Football 1, 2, 3,
4; Basketball 1, 2; Varsity Club
3, 4.

Helen LaFleur
Class V.-Pres. 2; Honor Society 3,
4; Student Council 4; Glee Club 1;
Intramural 1, 2; Candle Club 3, 4;
"Fly Away Home"; "The Bishop
Misbehaves."

Ida LaTocha
Hi-Light 4; Glee Club 1; Chorus 1;
Intramural 1, 2, 3, 4; Toppers
Club (Sec'y 4).

UPPER ROW

Sophie Lapezynski
Chorus 4; Intramural 1, 2; Dra-
matics 1, 2, 3.

Albert Linnell
Valedictorian; Band 1, 2, 3, 4;
Orchestra 3, 4; Hi-Y, 2, 3, 4; Hon-
or Society 3, (Pres. 4); Glee Club
2, 3, 4; Chorus 2, 3, 4; Dramatics
3; Brass Sextet 2, 3, 4; Double
Sextet 3, 4; Boys' Quintet 3, 4;
A Capella Choir 4; Debate 1, 2, 3,
4; "Captain of the Guard"; "Nor-
wegian Nights"; "Fly Away
Home"; "Jonesy"; "The Bishop
Misbehaves."

Agnes Lombard
Glee Club 1; Dramatics 2, 3.

Grant Martinchek

A. Linnell

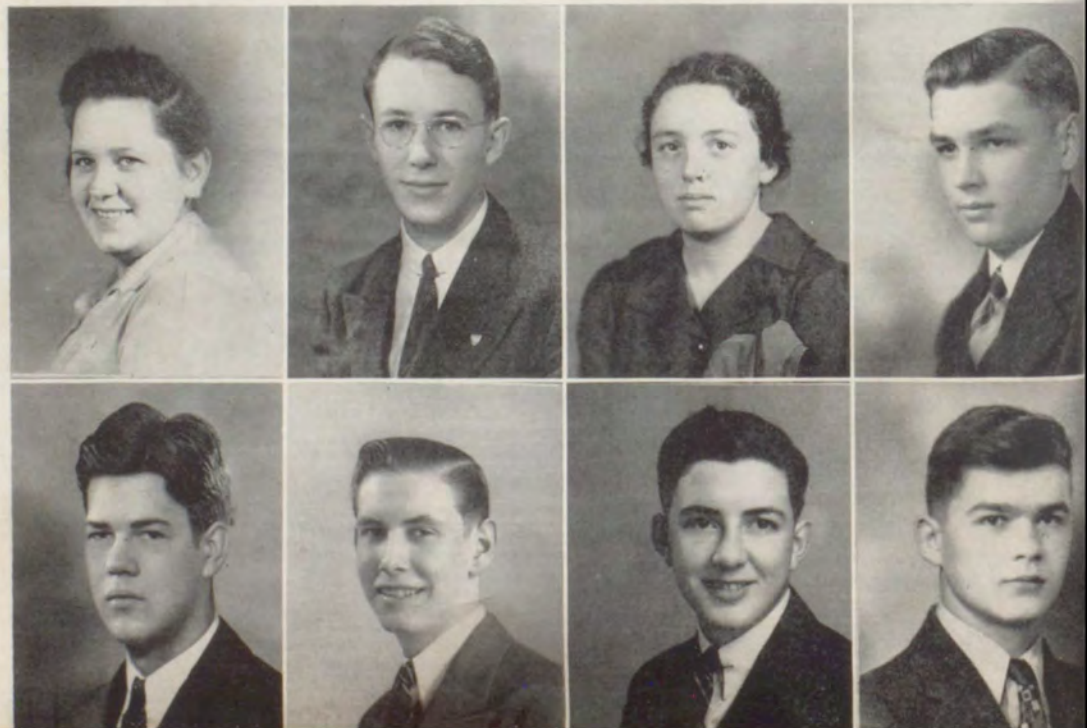
LOWER ROW

Jim Mastin
(Wester High School, Lansing 1;
Harbor Beach High School 2).

Bob Miles
Band 1, 2; Glee Club 1, 2, 3;
Chorus 2; Intramural 1, 2; Dra-
matics 1, 2; Golf 3; "Captain of
the Guard"; "The Youngest";
"Big Hearted Herbert"; "The
Bishop Misbehaves."

William Miles
Class V.-Pres. 3; Glee Club 1, 2,
3, 4; Chorus 2, 3, 4; Intramural 2;
Football 1; Golf 1, 2, 3, 4; Cheer
Leader 2, 3, 4; "Captain of the
Guard"; Pep Club 2, 3, 4.

Bruce Morrow
Hi-Light 4; Petosegan 4; Intra-
mural 1, 2, 3; Football 2, 3, 4;
Toppers Club 4.



UPPER ROW

Ralph Morrow

Glee Club 1, 4; Intramural 1, 2, 3, 4; Track 1, 3; Football 2, 3; Baseball 3; Toppers Club 4.

Ruth Morrow

Chorus 2; Intramural 1; Girl Reserves 4; Toppers Club 4.

Kirwan Mulligan

Heather Murner

LOWER ROW

Bonita Murray

Glee Club 4; Chorus 4; Intramural 4.

Clifford Newton

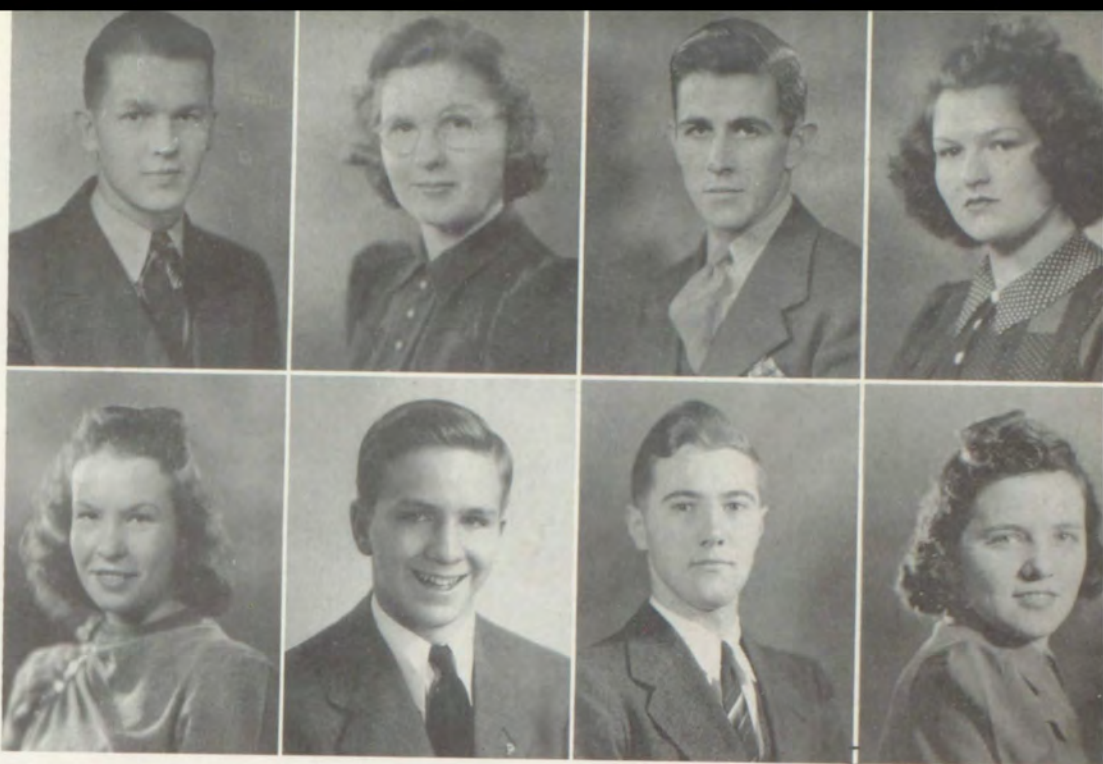
Intramural 4; Track 1; Football 1, 2, 3; Basketball 1, 2, 3; Tennis 2; Varsity Club 3, 4; Pep Club 3, 4; "The Bishop Misbehaves."

Paul Notestine

Toppers Club 4.

Agnes O'Dell

Glee Club 4; Chorus 4; Intramural 2; Candle Club 3; Toppers Club 4.



Marjorie Priebe

UPPER ROW

Henriette Otto

Intramural 1, 2, 3.

Helen Pater

Intramural 1, 2.

John Pollak

Glee Club 1; Chorus 1; Intramural 1, 2; "Captain of the Guard."

Marjorie Priebe

LOWER ROW

Dorothy Riese

Chorus 2, 3.

Richard Robinson

Band 1, 2; Hi-Light 4; Glee Club 3, 4; Chorus 3; Intramural 1, 2; Track 1, 2, 3; Dramatics 4; "Norwegian Nights"; "Jonesy."

Jack Ruggles

Hi-Light 3, 4; Intramural 1, 2; Tennis 1, 2, 4; Toppers Club 4.

Stephanie Salisz

Salutatorian; Honor Society 3, 4; Chorus 1; Intramural 3, 4; Candle Club 3, 4; Library 2, 3, 4.





UPPER ROW

Bonnie Sandel

Margaret Saurman
Glee Club 4; Chorus 4.

Lois Schantz

Student Council, (Pres. 4); Hi-Light 3, 4; Petosegan 3, 4; Glee Club 4; Chorus 4; Intramural 2; Candle Club 3, 4; Honor Society 4; "Fly Away Home"; "The Bishop Misbehaves."

Margie Schug

Glee Club 1, 2, 3, 4; Chorus 4; Dramatics 1, 2, 3; "Norwegian Nights."

LOWER ROW

Norva Shearer

Dick Shier

Not graduated.

Madelene Shinn

Glee Club 4; Chorus 4.

Joyce Smith

Class Sec'y-Treas. 1; Band 1, 2, 3, 4; Orchestra 1, 2, 3, 4; Honor Society 3, (Sec'y-Treas. 4); Quill and Scroll 3, 4; Student Council 1; Hi-Light 3; Petosegan 4; Glee Club 1; Chorus 3, 4; Intramural 1, 2, 3; Girl Reserves 2, (Sec'y-Treas. 3, Pres. 4); Candle Club 3, 4; "Captain of the Guard"; "Norwegian Nights"; Girls' Sextet 1, 2, 3, 4; Double Sextet 3, 4; Intramural Debate 2; Clarinet Quartet 1, 2. A Cappella Choir.

Joyce Smith

UPPER ROW

Ed Stanley

Intramural 3, 4; Track 2, 3, 4; Football 1, 2, 3, 4; Basketball 1, 2; Varsity Club 2, 3, 4.

Esther Stanley

Glee Club 4; Chorus 4; Intramural 2.

Lester Stanley

Gerald Steffel

Student Council 4; Toppers Club 4.

LOWER ROW

Milford Stevens

Joan Stewart

Irene Stolt

Hi-Light 4; Toppers Club 4.

Alice Stowe

Intramural 1, 2.

Esther Stanley

*David Steffel
"Hello I graduated"
How be my life?*



UPPER ROW

Elsie Swenor

Hi-Light 4; Petosegan 4; Intramural 1, 2, 3, 4; Track 1, 2; Dramatics 1, 2, 3, 4; G. A. A. 1, 2, 3, 4; Toppers Club, (Pres. 4); Art Study Club 1, 2.

Ed Szkaradek

(Cross Village Freshman Year).

Deora Taylor

Hi-Light 4; Intramural 1, 2, 3; Toppers Club 4.

Edythe Vaughan

Intramural 1, 2, 3; Girl Reserves 2, 3.

LOWER ROW

Eugene Wallace

Intramural 4; Toppers Club 4.

Shirley Wallace

(Indian River High School 1, 2; Wolverine High School 3); Intramural 4; Girl Reserves 4; Candle Club 4.

Roger Weinrich

Intramural 1; Football 1, 2, 4; Basketball 1, 2, 3, 4; Baseball 1, 2, 3, 4; Varsity Club 4; Pep Club 4.

Rolland Wheaton

Band 3, 4.



Charles Winnell

UPPER ROW

Lynetta White

Class V.-Pres. 2; Hi-Light 4, (Ed-in-Chief, 2nd Semester); Intramural 1, 2, 4; Dramatics 4; Candle Club 4; Toppers Club 4; Quill and Scroll 4; Honor Society 4.

Charles Winnell

Football 1, 3, 4.

George Winter

Rose Wodek

Intramural 1, 2.

LOWER ROW

Jack Zaiger

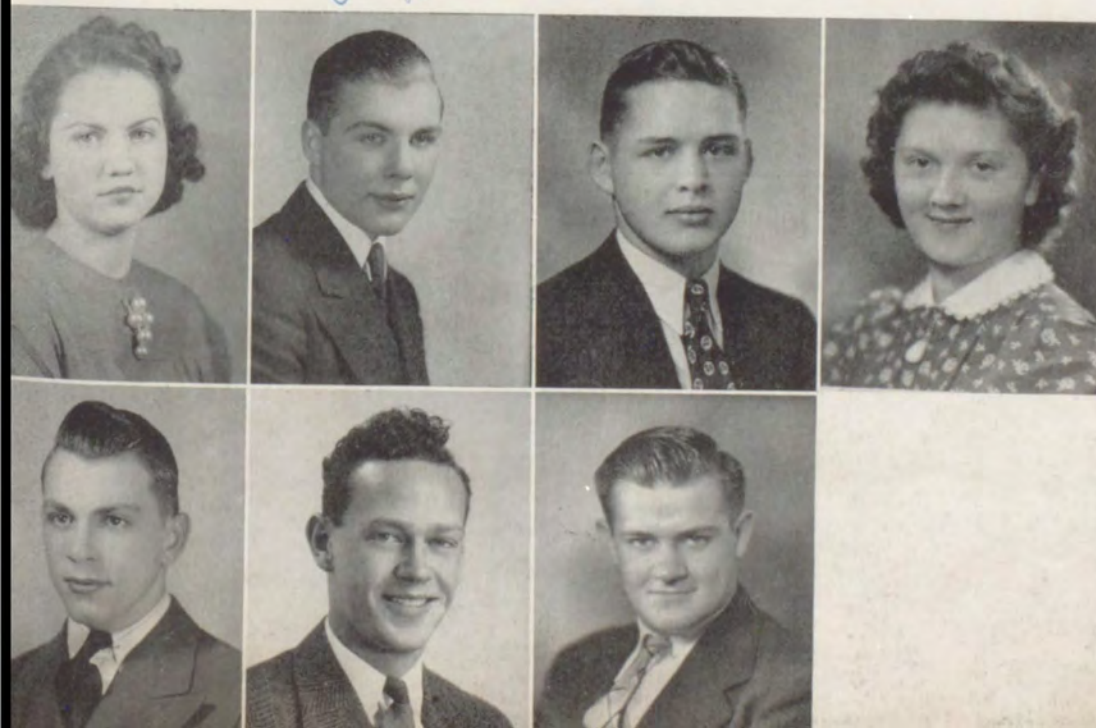
Class Pres. 3; Student Council 3; Intramural 1; Track 2; Football 1, 2, 3, 4; Basketball 2, 3; Varsity Club 4.

Bill Zipp

Band 2, 3, 4; Hi-Y 1, 2, 3; (V.-Pres. 4); Honor Society 3, (V.-Pres. 4); Petosegan 3, (Bus. Mgr. 4); Intramural 1, 2, 3, 4; Football 4; Baseball 1, 2, 3, 4; Varsity Club 4; "Norwegian Nights"; Debate 1, 2, 3, 4; A Capella Choir 4; Quill and Scroll 4; Glee Club 3, 4; Chorus 3; Intramural Debate 1.

Fred Zipp

Track 1, 4; Football 2, 3, 4; Varsity Club 3, 4.





No, Audrey isn't a snake charmer
 "Pinky", our hero
 A true Southern belle
 The thinker? or a lumberjack
 Colonel Gibson



A mid-summer snack
 The correct formal attire
 School girls



I double dare you . . .
 The editor checks up
 Hi-Light proofs corrected
 Gentlemen prefer blondes



2 seconds after the passing bell
 Vacation time
 The water's fine
 Some don't get away

Serve yourself
 "Here's Petoskey High School"

Norma Banwell
 (45)

Best looking boy
Dick Bonsecours
Most popular girl
Mary Jane Collins
Most popular boy
Ralph Ernst
Best looking girl
Helen LaFleur



Most bashful
Fred Zipp
Class athlete
Ted Garby
Class artist
Elsie Swenor
Class booster
Bill Miles

Class Elections



Fashion plate boy
Bill Zipp
Fashion plate girl
Audrey Fox
Most versatile
Lois Schantz
Class cynic
Jack Garringer

Drag with the faculty
Al Linnell
Class clown
Evelyn Crawford
Most original
Jim Doherty
Most musical
Joyce Smith



Big Shots

Lois Schantz
Student Council
President

Joyce Smith
Girl Reserves
President

Lucille Cole
Hi-Light Editor

Bill Zipp
Petosegan
Business Manager

Al Linnell
Valedictorian

Henriette Gordon
Dramatics Club
President

Paul Hazelton
Hi-Y President

Jim Doherty
Petosegan Editor

LOIS SCHANTZ

Always ready to cooperate in any activity, Lois Schantz is a well-liked member of the class of '40. The Student Council under her leadership has had a stronger influence on school life than it has for many years. Lois has acted in both of our plays, has been a member of the chorus, glee club, and Candle Club.

JOYCE SMITH

The easiest way to describe her would be to say that she is a bundle of activity — a package of talent, personality, and intelligence. Joyce, who is President of the Girl Reserves, served as Organization Editor of the Petosegan. Her other interests center around music; she is active in vocal groups and has been a member of the school band for five years.

LUCILLE COLE

Lucille's activities have included music, dramatics, athletics and journalism. She has participated in two class plays and was on the Inter-mural Debate team in '38. She served as Editor of the Hi-Light for the first semester of this year through the Tournament Issue, and acted in advisory capacity on the school paper throughout the second semester.

BILL ZIPP

One of the most versatile members of the class of '40 is Bill Zipp. You can see his curly red head on the football team, the debate squad, in the band, the Hi-Y and Varsity Clubs, or working on the Petosegan as business manager. This year he's been Paul's right-hand man in the Hi-Y as vice-president.

AL LINNELL

Our valedictorian, Al Linnell, has developed many other interest aside from his studies. He played title roles in two of the three class plays in which he acted. has been a member of the varsity debate squad, and solo cornetist in the band for the last two years. In his junior year he was elected into the National Honor Society and this year was president.

HENRIETTE GORDON

It would be difficult to say which of Henriette's talents is most outstanding for they are many. Elected as president of the Dramatics Club last fall she has led that organization to greater prominence. She participated in various music groups, both vocal and instrumental, is a member of the Girl Reserves and Candle Club and still finds time to draw and paint.

PAUL HAZELTON

Paul Hazelton is a popular senior student who has come to be more familiarly known to many as "Daisy." As president of the Hi-Y Club he has made that organization outstanding in school activities. Any time there's a school function "Daisy" willingly draws posters or works on decorations. Much of the success of our J-Hop in '39 was due to his efforts.

JIM DOHERTY

Jim ("C Gull") Doherty has taken advantage of all the journalistic opportunities PHS has to offer — the Petosegan, Hi-Light, and the Faculty News — and has made his own in the form of "Smash" that has "gone to press" in almost every class. Besides editing our year-book, Jim has been Sports Editor and Associate Editor on the Hi-Light staff.

Jane Kewitt "44"
Leona Yahr "44"



Mae Billian "44" Lopez

Underclassmen

Tom Gohy
"44"

1941



Top Row—Bill Adams, Louis Adams, Don Ballard, Verna Ballard, Quinton Banwell, Alma Barber, Pat Behan, Emma Lou Bellmer, Bob Benjamin, Maxine Brasseau, Eleynor Breseman.

2nd Row—Bob Brown, Helen Buckhardt, Ann Burek, Leon Burgess, Marion Burnett, Bob Bursian, Carl Coolbaugh, Alfred Cowan, Shirley Craig, Vernice Dalton.

3rd Row—Virginia Depew, Betty Dow, Charles Engler, Gerald Ernst, Meredith Fall, Helen Fetterhoff, Edith Foltz, Alfred Frank, Betty Lou Friend, Gloria Gerren, Martha Gibson.

4th Row—Amy June Gokee, Bob Grossman, Don Grossman, Dorothy Gruler, Ruth Hankins, Dick Harbaugh, Alfred Hass, Elisabeth Hass, Clyde Holborn, Eva Holzschu.

Bottom Row—Lester Hopper, Opal Hopper, Shirley Houck, Virginia Hunsberger, George Huzek, Robert Jay, Elizabeth Jensen, Betty John, Charles Johnson, Lela Johnson, Vernon Kalchik.

The class of 1941 was led during the past year by Bob Brown. Fred Rose was vice-president and Betty Dow the secretary-treasurer. Its members on the Stu-

dent Council were: Helen Roberts, Betty John, Bob Bursian, and Charles Johnson.

Top Row—Marjorie Koboski, Marion Kolinski, Ardith Knight, Don Krusell, Lewis Krusell, Louise Krusell, Grant Lambertson, Lois Leach, Jack Lee, Earl Leisner.

2nd Row—Evelyn Longcore, Jack Lucas, Mary Murphy, Barbara MacMillan, Reva Marquardt, Rex Marquardt, Bob Mattson, Rosalie Moens, Betty Moreau, Evelyn Ludlow.

3rd Row—Rockwell Nelson, George Niswander, Bob North, Louise Nowland, Harold O'Donnell, Don Olson, Arlene Perry, Alyce Platt, Jim Ream, Freal Reyner, Helen Roberts.

4th Row—Fred Rose, Lillian Rose, Lornajean Schneider, Jim Shier, Viola Shemin, Catherine Sheckler, Patricia Sik, Roberta Sommer, Verna Sommer, Betty Stark.

Bottom Row—Margaret Stark, Dick Valpey, Virginia Van Leuven, Aileen Wait, Louis Young, Shirley Zimmerman, Lucille Zink, Beverly Zipp, Eileen Zipp, Priscilla Zuiderhoek. Not in the picture—Joan Batcheller, Bob Harris, Bill Krauser, Floyd Potts, Paul Rae.

1941



Leona Kondziela
H. Ziela

1942

Ruth Brill
Elaine Dashner



Top Row—Bill Annabell, Leatha Baird, Orlie Baird, Boyd Banwell, Charles Baumgartner, Gerry Behan, Anna Louise Beyer, Gladys Black, Ruth Brill, Zoe Burnett.

2nd Row—Evelyn Campbell, Pat Campbell, Jack Case, Clara Louise Clapper, Marion Coveyou, Bruce Craig, Bill Crawford, Louise Cripe, Wanda Curtis, Catherine Czerkie.

3rd Row—Steve Dainoviec, Elaine Dashner, Pat Doherty, LaVerne Doxtator, Eugene Ecker, Vincent Fochtman, Bob Friend, Dick Friend, Ralph Graham, Donald Greenwell.

4th Row—Vera Jean Grossman, Jeanette Hall, Mary Rita Hegener, Charlotte Hess, Russell Hinds, Keith Horniman, Catherine Hull, Virginia Jensen, Bob Kage, Jeanette Kasquat.

Bottom Row—Janice Keller, Jean Kemp, Margaret Kemp, Cy Ketchum, Joe Koboski, Edward Kolinski, Leona Kondziela, Marion Krusell, Bill Lamsler, Anna Mae Lanterman.

The class officers of the class of 1942 were: Charles Baumgartner, president; Hugh Winnell, vice-president; and Mary Rita Hegener, secretary-treasurer. Those on

the Student Council were: Ruth Ann Schomberg, Dave Ross, Mary Rita Hegener, Keith Horniman, and Floyd Potts.

Top Row—Coach shows Baldy How, Mary Lou Larson, Julia Laszar, Julia La Tocha, Lawrence Longcore, Gage Loveless, John Mackie, Marjorie McDonald, Audrey McPherson.

2nd Row—Howard Meehan, Mildred Meister, Martha Miller, Marion Mollhagen, Thora Neff, Leora Nessner, Nanette Paulus, Anna Parr.

3rd Row—Eileen Richardson, Carl Riley, David Ross, Norman Russell, Shirley Schmitt, Ruth Ann Schomberg, Roger Seamon, Willard Sherwood, Pat Stafford, Margaret Stanley.

4th Row—Iris Stansberry, Eleanor Steffel, John Steffel, Laura Steffel, Marjorie Steffel, Alden Sterzik, Billy Stockhill, Juanita Thompson, Howard Thurtell, Betty Tuttle.

Bottom Row—Clifton Wager, Norman Ward, Eugene Watt, Edwin Weber, Marion White, Pearl White, Robert Williams, Hugh Winnell, John Winter, Arlene Wurst.

Not in the picture—Walter Holcomb, Clyde Kent, Dale Switzer, Jean Hammtreee, Elizabeth Kaszubinski, Jeanette Kasquat, Patricia Starks, Evelyn Lewis, Doris Thompson, John Mackie.

Shirley Schmitt



1942

Howard Thurtell
414

Arlene Wurst



Athletics

*"Happy Landings"
Lorraine Burgess*

*Betty Buehl
"145"*



Football

Top Row—23, Bill Zipp; 25, Fred Zipp; 19, Ralph Ernst; 42, Ed Stanley; 35, Bob Cooper; 28, Clyde Hall; 27, Herb Hopper. Middle Row—30, Glen Anys; 37, Jack Zaiger; 39, Bruce Morrow; Winfield Gibson, (winning snapshot); 22, Bob Bursian; 32, Dale Switzer; 16, Don Greenwell. Bottom Row—36, Sam O'Donnell; 33, Meredith Fall; 43, John Gehman; Hugh Winnell, Charles Baumgartner, Bob Harris, George Huzek.
Not in Picture—Henry Kuberski.

Coach Sebo's call for football aspirants was answered by about 50 candidates last fall. The grid eleven was expected to go places, but with their heavy schedule and a lack of adequate replacements, succeeded in winning only two games.

GAYLORD 13 PETOSKEY 0

The heavy Gaylord gridsters, who had but 13 points scored on them in the year, introduced night football on the Petoskey gridiron with a 13-0 set-back.

BOYNE CITY 0 PETOSKEY 13

Boyne's red and black was pushed all over the field by a demon-fighting Petoskey eleven. After penalties had stopped several more touchdowns, Petoskey was out in front 13-0. Hopper and Anys did the Petoskey scoring.

HARBOR 0 PETOSKEY 12

Harbor failed to impress the scoreboard and bowed to Petoskey 12-0. This time it was Switzer and Hopper who scored.

LUDINGTON 40 PETOSKEY 12

Playing under every adverse weather condition—sleet, wind, snow, and cold, Petoskey was beaten by the co-champion Ludington Orioles 40-12. In the last half, Petoskey scored 12 points to Ludington's 13.

ALPENA 34 PETOSKEY 0

Crippled after the Ludington game, Petoskey bowed to Alpena's mighty Cats 34-0. The Wild Cats converted blocked punts into points.

CHEBOYGAN 13 PETOSKEY 0

Again it was a sleet-drenched field that Petoskey was compelled to play on, and after a terrific fight, Cheboygan was the team that emerged on the top side.

CADILLAC 7 PETOSKEY 6

Cadillac scored in the last 78 seconds to overcome a Petoskey lead that had been held since the first few minutes of the game. This defeat cost Petoskey a tie for fifth place in the Big 7.

TRAVERSE 34 PETOSKEY 0

Traverse featured the game with long gallops and surprise plays to defeat Petoskey in the last battle of the season. The score was 7-0 three minutes before the half—and Petoskey had the ball on the four yard line. An intercepted pass and a 96 yard run was the turning point of the game.

Bill Zipp was picked an end on the All Northern second team and Glen Anys a halfback. In the 1938 season Fred Zipp was picked as a tackle on the All Northern second team. Other seniors receiving letters were: Clyde Hall, Bob Cooper, Ralph Ernst, Ed Stanley and Jack Zaiger.

Coach Steve Sebo's Northmen, backed by only one veteran, startled the north with a "Dark Horse" team that finished one game out of first place in the Big 7 title quest. This versatile quintet was beaten on the home floor by only one team—that the State Class B champions of Traverse City.

The starting lineup throughout the season was Captain Ted Garby and Rockwell Nelson guards, Dick Harbaugh center, Dick Bonsecours and Louis Young forwards. The team won 11 of their 14 scheduled games and outpointed their opponents 378-271. In the regional tournament they drew the state champion Traverse team and bowed 33-22. The 22 points in that game brought the season total to 400 points.

The 1939-40 cage season was opened with a surprising 24-23 victory over Boyne City. Ted Garby tallied 4 points in the last 68 seconds to save what appeared to be a lost game.

Charlevoix was then invaded and the Northmen had an easy time of it, winning a 38-15 walkathon.

Petoskey entered Big 7 competition with a 34-24 victory over Cadillac and was recognized as a menace in the league.

Alpena bowed to a cautious playing Petoskey five 28-18. Petoskey led all the way and he'd the ball until Bonsecours was open under the basket. Dick totaled 10 points.

The first defeat of the season came at the hands of Traverse's mighty Trojans on the home floor 20-14. Petoskey played a stalling game, but could not get the offense going. Had Petoskey won this game, they would have shared the Big 7 crown with Ludington.

Harbor Springs, Petoskey's traditional rival, migrated to Petoskey for the annual clash and returned on the short end of a 31-19 count.

Charlevoix came to the Petoskey hardwood, put up a terrific fight, but left with the scoreboard reading 38-17 against them.

On a cold, stormy night the Petoskey Northmen topped Cheboygan's scrappy chiefs 22-19 in an out of town conquest.

Again Petoskey came from behind to win—but this time it took an overtime to beat Boyne City 21-20.

Playing the poorest ball of the season, Petoskey eked a 24-21 win from the weak Cadillac five which didn't register a Class B win all season.

The second (and only other team) to beat Petoskey during the season was a stirring 25-22 upset sprung by Harbor on their court before one of the most disappointed crowds of the season.

Petoskey fell into a 3rd place mire at Traverse, going down 31-17. The score was 22-16 with four minutes to play.

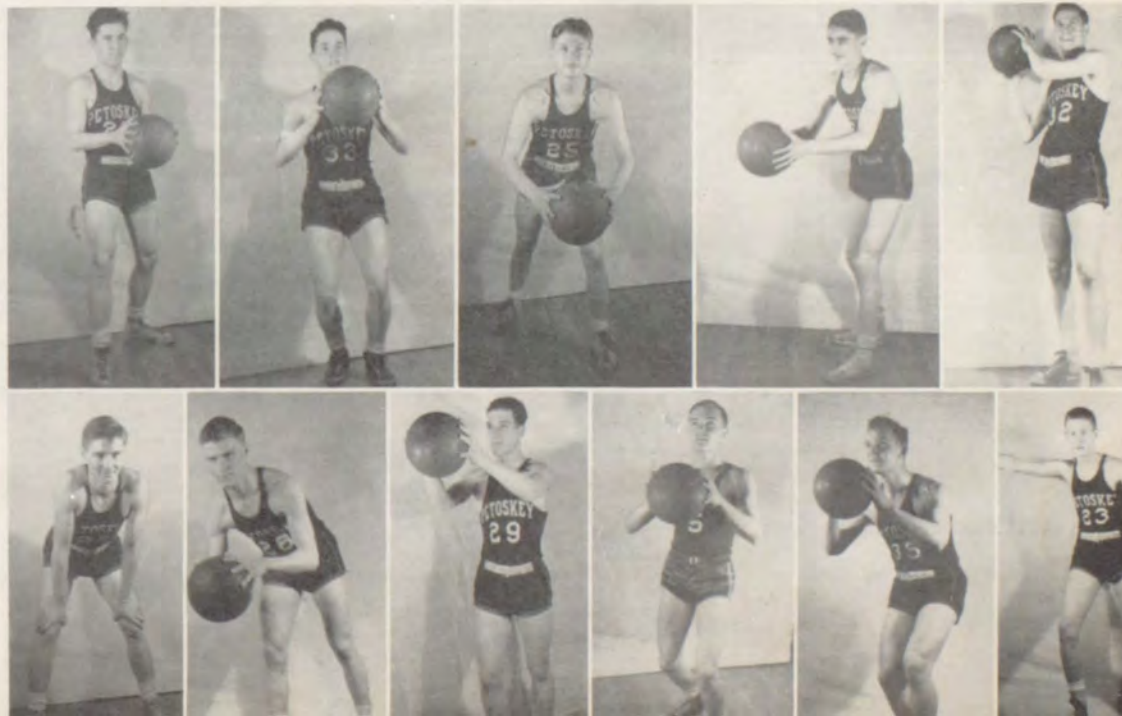
Alpena was beaten by the identical score of 28-18 on the home floor. The green and white trailed 19-4 at the half.

The highest score a Petoskey team had registered in four years was recorded in the last game of the season when Petoskey ran off with Cheboygan 42-27. Dick Harbaugh chipped in 22 points to score more than any Petoskey player had done in a single game in several seasons.

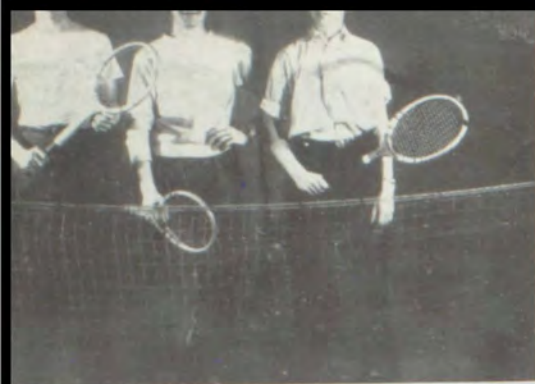
Lost through graduation are Dick Bonsecours, Captain Ted Garby, and Roger Weinrich.

Tow Row—Left to right—Rockwell Nelson, Dick Bonsecours, Ted Garby, Dick Harbaugh, and Louis Young. Bottom Row—Bob Bursian, Dave Ross, Hugh Winnell, Jack Lucas, Meredith Fall, Roger Weinrich.

Basketball



Minor Sports



Tennis Team—Paul Hazelton, Jack Lucas, Fred Rose. Baseball squad—back row—left to right—Harold O'Donnel, Hugh Winnell, Bob Copper, Bill Zipp, Louis Young, Roger Weinrich, Quinton Banwell, Lester Hopper, John Hess. Third Row—Harold Cosgrove, Dick Bonsecours, Rockwell Nelson, Don Miller. Second Row—sitting—John Winter, Bill Sommer, Clyde Holborn, Wayne Grossman, Bob Bursian, Bruce Craig, Ted Garby. Front Row—George Huzek, Bob Harris, Glen Anys, Rex Marquardt. Track Team—left to right—Coach Bartlett, Dick Harbaugh, Pat Campbell, Charles Baumgartner, Bob Gibson, Dale Switzer, Dave Ross, Ed Stanley, captain, Clyde Hall. Golf Team—left to right—Orlie Baird, Earl Holborn, Ralph Chapman, Charles Ballard.

Tennis

Mr. MacMillan had a small tennis squad which had every thing but experience. The fellows played good games and improved as the season advanced, winning and losing a match with Harbor Springs, lost both to East Jordan, and Cheboygan. The season was climaxed with the regional meet at Cadillac in May.

The members of the 1939 team were: Paul Hazelton, Jack Lucas, Fred Rose, Jim Barton, and Harold Hendricks.

Track

Under the able direction of Coach Lynn Bartlett, a small but versatile Petoskey track team turned in some excellent results during the 1939 season.

The team was composed of eight men. The majority of these were veterans who were back for the 1940 sessions. Mr. Bartlett took five of these fellows, Dave Ross, Dale Switzer, Dick Harbaugh, Ed Stanley (1940 captain) and Clyde Hall to the regional meet at Cadillac last spring and every man scored.

Last year it was Dave Ross, '42, who ran the mile. Clyde Hall, '40 and Dick Gosselin, '39 the 440's, Bob Bursian, '41, and Dale Switzer, '42, the 220's and 100 yard dashes. Dick Harbaugh, '41, and Pat Campbell, '42, lofted the high jump and the hurdles. Ed Stanley, '40, and Dave Ross participated in the broad jump. Ed was elected captain of the 1940 track squad.

A drive for candidates was held throughout the spring and with the returning veterans and support of the student body, a small team was expected this spring.

To earn a letter, members must score in either the conferences or regional meets. The five who went to

Cadillac were awarded letters at the conclusion of the school year.

Baseball

One of the strongest nines in recent years represented Petoskey in the 1939 season. The team won 9 of 11 games, and managed to avenge one of the defeats with a return victory over Cheboygan; the other came at the hands of East Jordan. Teams defeated were Alanson, Charlevoix, Traverse, Harbor, Cheboygan, Onaway.

Pitchers were Doyle Vincent, Dick Gosselin, and Roger Weinrich, the latter was the only veteran back this season. Ted Garby was the man in the iron mask, Bill Zipp upheld first base, Jim Behan was on second, Bob Bursian third, Dick Bonsecours set some accuracy records with his pegs from short to first; in the outfield Bob Cooper, Maynard Bailey and Percy Upton alternated with Vincent and Gosselin. Others who saw action were Herb Hopper, Luke Cahill, Glen Anys, Harlow Keating, and Willard Sherwood.

Baseball is coached by Mr. Sebo.

Golf

The 1939 Golf team lacked veterans last spring, but under Mr. MacMillan's careful guidance, some good score cards were turned in.

The Bay View Country Club was the practice grounds for the team, and the scene of a match with Mackinaw City and Traverse City. Petoskey players dropped both matches and the return meets, but enjoyed and improved their game throughout the season.

The team was composed of Bill Miles, Charles Ballard, Earl Holborn, Orlie Baird, and Bud Chapman.

Girls Athletic Ass'n

Seventy three girls entered the Girls Athletic Association last September; this spring but nineteen remained eligible for the coveted awards. Interest has grown with each succeeding year, and during the 1939-'40 period the number of participants practically doubled that of last year.

Any girl in or above the eighth grade may work for an award in the GAA. A chenille numeral is awarded the first year, a chenille letter the second year, and a gold charm the third year. These awards were designed especially for the GAA and are standard from year to year. The object of the association is to encourage as many girls as possible to participate in a variety of athletic activities.

A total of 800 points is necessary to earn an award, with 50 points required for each month. About two thirds of the total points are earned in major school sports, such as basketball, soccerball, volleyball, baseball. Also two "play days" are held in the fall and spring of the year.

One hundred points may be earned in each of the major sports; the remaining points are earned in individual sports with a limit of twenty-five points for each

activity. These individual points may be earned from tennis, ping pong, badminton, shuffleboard, hiking, bicycling, horseback riding, hand ball, golf, roller-skating, and all winter sports. Officiating at tournament games or play days also adds points. Other points may be earned from the tennis tournament held in the spring.

Intramural

One of the most keenly contested intra-mural basketball seasons came to a surprise finish this spring when Don Bare's senior team came up to end on top of the pile. The turnout was not as strong as usual, but the competitive spirit made the season a success. "Mac" MacMillan is the sponsor of this after-school activity, and takes an active interest in the competition.

Don Krusell's Junior team stepped to the front with two victories but fell into a quagmire and ended one game out of last place.

Team Captain	W	L	T
Following is the final standings (April 10)			
Don Bare	4	1	2
Bob Cooper	3	2	1
Don Krusell	2	3	0
Clyde Hall	1	4	1

G. A. A.—Back row—left to right—Beverly Zipp, Mary Lou Larson, Mary Murphy, Lela Johnson. Front Row—Julia La Tocha, Alma Johnson, Ruth Brill. Lower Picture—Back Row—left to right—Louise Cripe, Elsie Swenor, Betty Tuttle, Shirley Zimmerman, Opal Hopper. Second Row—Shirley Ernst, Catherine Czerkie, Lucille Cole, Cleo Johansen. Front Row—Viola Kage, Marian Johansen. Senior High Intramural Champs—Left to right—Wayne Grossman, Clyde Hall, Ed Stanley, Bill Zipp, Paul Hazelton. Junior Champions—Richard Billings, Bob Ernst, Jay Bain, Don Stark, Don Grossman.

Intramural

Alma Johnson





The foods class prepares a dinner
 Nope it isn't burnt yet
 Careful menu planning avoids too many calories
 A delicious odor pervades all as the food is served



Guest McDonald waits for all hostesses to be seated
 Carving practice avoids an embarrassing moment
 Dishpan blues



Lorna helps paint Petoskey's history
 Art for Art's sake
 Jo Kerwin and her masterpiece



Yea, Team! ' .
 Any's 95 yard run (1938)



Harbaugh scores again
 "Stands our Campus Alma Mater"



A stitch in time
 Night Duty
 Just Girls
 Smile, Joyce
 Lucille prepares Hi-Light Copy



Organizations



1940 Petosegan

Two write up wizards and the publicity manager; good picture 'eh Joyce; a consultation; Joyce and Bob trim the underclass pictures; Audrey, secretary-treasurer keeps the books up; more staff members; activities editor; Lucille brings out one of her smiles, Henriette helps put it together; the staff finds it hard to keep from laughing at the cameraman; the business manager stops to smile.

THE STAFF

Jim Doherty
Bill Zipp

Editor-in-chief
Business manager

The staff of the 1940 Petosegan was organized late last fall by faculty adviser John F. McDonald, editor-in-chief Jim Doherty, who was elected by the Senior Class, and business manager, Bill Zipp.

The staff ably took the load of creating a lasting memory book that would stand the gaff of time and completely cover school life. Photography was considered the most effective way to accomplish this so photographs of commercial photographers and the work of Bob Benjamin, Alfred Frank, and Carl Coolbaugh were combined. Mr. Carter of the Northern Michigan Review furnished pictures of the football team.

Joyce Smith efficiently handled the organization writeups, Henriette Gordon activities. Audrey Fox recorded the business transactions. The annuals were sold by the Student Council supported by Jack Lee's publicity drives.

ORGANIZATION STAFF

Joyce Smith, editor
Lois Schantz
Vernice Dalton
Stephany Salisz
Ida La Tocha
Mary Jane Collins
Lucille Cole
Alyce Platt
Betty Dow

ACTIVITIES STAFF

Henriette Gordon, editor
Dick Bonsecours
Celia Goerke
Al Linnell
Bruce Morrow
Ray Fochtman
Priscilla Zuiderhoek

BUSINESS STAFF

Bill Zipp, mgr.
Audrey Fox, treasurer

SALES STAFF

Jack Lee, Publicity mgr.
(Sales by members of student council)

PHOTOGRAPHY STAFF

Bob Benjamin
Alfred Frank
Carl Coolbaugh
Martha Gibson, snapshot ed.

For this year's publication of the school paper, the Hi-Light, Mr. McDonald selected twenty-seven students to make up one of the most versatile and original staffs in Petoskey High School journalism. The Hi-Light has been in existence only three years and shows great improvement with each year's changes and advancements in journalistic endeavors. The school paper reflects the life of the school and this year's paper has served a worth while purpose.

Since the beginning of the school year the new staff has changed the page make-up, revised the style sheet, added new and original features, increased the circulation and raised its standard of journalism. There were four distinct and different features of the year, the first, the debate "scoop"—a headline story of the victory over Traverse City which advanced the team to the quarter finals of the state elimination series. The debate took place the evening before the paper was distributed.

Next came the "silver-covered" tournament issue, the largest paper ever edited by a Petoskey High School newspaper staff. The twenty-page paper contained by-line stories from the competing schools, records of the teams, all-time tourney winners, school songs, and the tournament schedule. After each evening session, "extras" were distributed in the corridor. These papers which were mimeographed contained stories of the games just played, with leading scorers and line-ups.

The fourth feature issue was the "Lo-Lite", or April Fool issue. This multicolored nonsense sheet is traditionally published each year on April 1.

Petoskey merchants cooperated with the staff throughout the year, supporting the paper with advertisements.

In the fall, Lucille Cole, first semester editor-in-chief, and Marijane Collins, managing editor, represented the school at the National Scholastic Press Association convention held in Chicago. A delegation of staff members represented the paper at the Michigan Interscholastic Press Association in Ann Arbor during May.

Lynetta White served as editor during the second semester. Other staff members have been:

Associate Editor, *Jim Doherty*; Managing Editors, *Mary Jane Collins, Vernice Dalton*; Ass't, *Rose Dombroski*; Organization Editor, *Bob Lamser*; Girl Sports Editor, *Deora Taylor*; Exchange Editor, *Ida La Tocha*; Feature Editor, *Louise Johnson*; Art Editor, *Elsie Swenor*; Reporter, *Lois Schantz*; Photographers, *Alfred Frank, Bob Benjamin, Carl Coolbaugh*; Business Manager, *Celia Goerke*; Treasurer, *Audrey Fox*, Circulation, *Betty Hand*; Advertising Manager, *Jim Craddock*; Advertising, *Jack Lee, Dick Bonsecours, Evelyn Crawford*.

The Hi-Light is a member of the National Scholastic Press Association, the Michigan Interscholastic Press Association, and Quill and Scroll.

The 1939 critical rating of Quill and Scroll listed the Hi-Light among the papers receiving First Class Honor rating.



First Place
Quill and Scroll
Award 1939



Lucille, first semester editor, smiles at the cameraman. C. Gull records another scoop? Deadline . . . need more he said? Dick surveys some art work. "No kiddin'?" asks Vernice. Some more long faces at deadline. Copy is often just that silly. Under pressure from the ad men, Mr. La Tocha signs. Mr. McDonald oversees some circulation receipts. Lynetta, second semester editor, and Elsie, fold papers. The staff puts out the tournament issue at the Review.

The Hi-Light





Hi-Y

Back Row—Jim Craddock, W. J. MacMillan, Adviser; Bob Brown.
 3rd Row—Carl Coolbaugh, Jim Doherty, Jack Lee, Bob Benjamin, Walt Dow, Charles Baumgartner, Dave Ross, Ralph Ernst, Dick Bonsecours.
 2nd Row—Gerald Ernst, Bob Mattson, Bob North, Jack Lucas, Hugh Winnell, All Linnell, Bob Bursian, Wayne Grossman.
 Front Row—Don Grossman, Dale Switzer, Dick Harbaugh, Bill Zipp, Vice-President; Paul Hazelton, President; Fred Rose, Secretary and Treasurer; Harry Kurtz, Ray Fochtman, Charles Johnson.
 Not in picture—Bob Grossman, Ted Garby, Dick Bonsecours, Floyd Potts, Orville Feather.



The Hi-Y Club has completed another year of outstanding work in PHS. This year the Club was organized into five committees: Worship, Program, Service, Publicity, and World Friendship, each committee being responsible for three meetings during the year. Under this organization and with the guidance of Walter J. MacMillan, faculty adviser, the Club has enjoyed a very profitable year. Leading the Hi-Y in its program have been Paul Hazelton, president; Bill Zipp, vice-president; and Fred Rose, secretary-treasurer.

In the latter part of the summer Paul Hazelton and Bill Zipp represented the Club at Camp Hayo-Went-Ha, where clubs from all parts of Michigan sent members to take part in a week of fellowship and training for club work. During this period the members are in-

structed in the aims of the Hi-Y which are to develop Christian character, fellowship, and extend the platform of Clean Speech, Clean Athletics, Clean Scholarship, and Clean Living. In November, Dr. Grafflin, who is widely known through his work in connection with the Y. M. C. A. was sponsored as an assembly speaker. In December seven delegates, Bob Benjamin, Carl Coolbaugh, Wayne Grossman, Paul Hazelton, Bill Zipp, Fred Rose, and Jim Craddock, accompanied by Mr. Rolph and Mr. Bond, attended the Older Boys' Conference in Flint. During the Football season the Hi-Y had the concessions at all home games, turning over 40 per cent of the profits to the school to aid in the payment of the loud speaking system purchased this year.

Regular supper meetings have been held the second and fourth Mondays of every month with varied worship programs, speakers, and panel discussions. Two meetings were held jointly with the Girl Reserves. Special meetings have included the annual faculty breakfast, a party for the alumni during Christmas vacation and a party at the municipal cabin to which the boys invited guests.



Under the direction of Miss Helen Ryerse and Miss Genevieve Taggett, the Girl Reserves have completed their third successful year in PHS. At the close of last year the members elected Joyce Smith, president; Betty Dow, vice-president; Audrey Fox, secretary; and Mary Hoffer, treasurer.

The girls' council, composed of Joyce Smith, Betty Dow, Audrey Fox, Mary Hoffer, Beverly Zipp, Betty John, Alyce Platt, Joan Batcheller, and Louise Johnson, met at the beginning of the school year and selected twenty-three new members who, with two affiliated members, increased the club's membership to thirty-five. The new members, as is the custom, were formally initiated into the club during an impressive candle-lighting service.

The Girl Reserves is a junior branch of the Y. W.

C. A. The members strive to attain high standards and ideals and to be of helpful service to both the school and to the community. Aside from regular bi-weekly meetings, the clubs has participated in several service-projects. At Christmas time a party was given for a group of young grade school girls, who otherwise might not have enjoyed one. During the series of talks through the Institute of International Understanding, which lasted over a period of four weeks, Girl Reserves acted as ushers. Later in the year they were in charge of a project in connection with a cancer talk. The club managed two concessions at the games and cooperated with the Coordinating Council in operating the lunch room during a school dance. This spring a sum of money was donated to the band to be added to the Band Uniform Fund.

Among the more enjoyable social meetings were two joint meetings held during the year with the Hi-Y Club. The Reverend Arthur Cruickshank of Harbor Spring was the speaker, following the first dinner. Following the second dinner, Merrill Enyeart, associate state secretary of Y. M. C. A. was guest speaker. The club sponsored two high school parties, the first at the beginning of the year, in conjunction with the Hi-Y the second, and evening dance on a Tuesday night which proved successful as an experiment in school-night dances. The latter included games with special entertainment during intermission. The final meeting featured a farewell party for the seniors.

On the Women's Council are Miss Esther Christopher, chairman, Mrs. W. W. Henitz, Mrs. Arthur Hinkley, Mrs. Walter Schlechte, and Mrs. H. O. Carlzen.

Top Panel—left to right—Miss Ryerse, Miss Taggett, Audrey Fox, Mary Hoffer, Lois Leach, Virginia Van Leuven, Jean Wheat, Joyce Smith, Priscilla Zuiderhoek.
 Center Panel—Louis Cripe, Verna Ballard, Barbara MacMillan, Shirley Craig, Audrey McPherson, Iris Stansberry, Pat Stafford, Marion Mollhagen, Mary Lou Larson, Beverly Zipp.
 Bottom Panel—Betty Dow, Vernice Dalton, Mary Jane Collins, Louise Johnson, Arlene Perry, Henriette Gordon, Martha Gibson, Verajean Grossman, Iris Stanberry, Shirley Craig, Evelyn Ludlow, Barbara MacMillan, Louise Cripe.
 Not in picture—Ruth Morrow, Shirley Wallace, Joan Batcheller, Betty John, Alyce Platt, Ruth Brill, Anna Mae Lanterman, Catherine Sheckler, Janice Keller.

Virginia Van Leuven
41



Girls Reserves

Band



Cornets—Albert Linnell, Walter Dow, Bill Zipp, Don Miller, Pat Morrison, Douglas Kirp, Don McCalmon, Quinton Banwell, Bill Olsen, Bill Krauser. Baritone—Bill Adams, Jean Wheat. Trombone—George Niswander, Jay Bain, Allen Townsend. Flute—Henriette Gordon, Marvel Platt, Carl Riley. Horn—Ray Fochtman, Orvie Baird, Orval Feather, Margaret Wheat, Roger Seaman. Bass—Harry Kurtz, Paul Rehkopf. Percussion—Alfred Frank, Bob Cross, Don Hodgkiss. Clarinet—Fred Rose, Joyce Smith, Charles Johnson, Shirley Schmitt, Carolyn Brockway, Jim Townsend, Jane Parks, Ralph Chapman, Grant Lambertson, Rolland Wheaton, Betty Lou Friend. E Flat Clarinet—Dick Tousain. Oboe—Shirley Fryman. Alto Clarinet—Mary Jane Fogarty. Bass Clarinet—Alice Townsend. Soprano Sax—Clark Dean. Tenor Sax—Carol Chapman. Alto Sax—Earl Leismer, Boyd Banwell.

Under the excellent instruction of Mr. Frederick C. Schmoyer, instrumental director, the Petoskey High School band has once again gained recognition as a successful organization.

Last fall the band members worked tirelessly to perfect the difficult formation they presented between halves of the Cheboygan football game, in addition to playing at all other home games for both football and basketball. They journeyed to Boyne City where they helped cheer the basketball squad to victory. A number of tricky novelty arrangements were included with the marches played at the basketball games.

In March the band and vocal groups cooperated in presenting a concert to an enthusiastic audience. The second half of the program was given over to the band which displayed skill and fine interpretation of such favorites as the "Unfinished Symphony" and selections from "May Time." "The Italian in Algiers", an overture, and "Cypress Silhouettes", a modern rhapsody, although not so well known drew the applause of the audience. A feature of the program was "In a Persian Market" played by the band with Joan Batcheller singing the soprano solo and the chorus joining to present a massed number. The concert proved successful both financially in raising money for the uniform fund and as

an enjoyable musical event of the year.

The band appeared in the Northern Michigan Annual Band and Orchestra Festival held on May 3 in Gaylord and was rated highly by the critic judge Mr. Falcone of Michigan State College for its individual performance in the afternoon. Members also participated in the Massed Band Concert in the evening. For Class Day and Commencement exercises the band played the recessional and professionals besides special numbers.

This is the first year the schedule has allowed an hour each day for band practice. This arrangement of five days a week provides full credit for all the band members.

Another great asset to the band has been the recording machine purchased this year by the music department. By first listening to the recording of an outstanding orchestra or band and then to one of its own recordings, defects can be found and eliminated. Numerous recordings show marked accomplishments of the band.

The tournament concession was in charge of the band members who realized a large profit to be added to their uniform fund. They also sold balloons at games with the aid of the Girl Scouts. Other organizations have donated sums of money to the fund.

The PHS orchestra, under the direction of Fredrick Schmoyer, has successfully completed another year of outstanding performances. This organization ranks high in school and civic affairs.

Composed of twenty-five members, the orchestra has presented arrangements of many familiar pieces such as Strauss' Blue Danube Waltz, Houfman's Barcarolle and a melody of pieces from the operas Rigoletto and Pagliacci. Also included among the selections presented were a group of modern arrangements by George Lindsay and George Sprague among which were the Oracle, Plantation Overture, Sherherds Dance, and the Slavonic Dance. The orchestra has added much to the years most outstanding entertainment features such as the Junior Play, the Senior Play and the International Rotarian Good Will Lectures and Bacclaureate.

This semester Mr. Schmoyer started a Music Ap-

preciation Hour in the orchestra. One day each week was devoted to hearing famous works, like Beethoven's First Symphony, with one of the members having first told the history of a composer's life and another the explanation of the symphony or opera to be heard. In this manner the members have become familiar with a number of world famous composers and their works.

If any member of the orchestra has the ambition to be a conductor he has the opportunity to exercise his talent in that organization. Each member has been its "Guest Conductor", and has chosen the piece he would like to direct as well as directing it as he thinks it should be done. Many of the members showed ability at this task.

The orchestra meets each Monday, Wednesday, and Friday, third hour.

Violins—Betty Lou Friend, Barbara MacMillan, Mary Lou Larson, Orlie Baird, Patsy Donnelly. Violas—Anna Louise Beyer, Shirley Fryman, Alice Friend, Elizabeth Jensen, Dave Watt, Angela Powers. Cellos—Ruth Nevins, Mary Jane Fogarty. Horns—Ray Fochtman, Ahmo Jordan. Trombone—George Niswander. Cornet—Al Linnell. Clarinet—Jean Liberty. Flute—Henriette Gordon. Sax—Earl Leismer. Piano—Joyce Smith.

Orchestra





Girls Glee Club

Back Row—left to right—Nanette Paulus, Gloria Gerren, Lucylle Dombroski, Helen Fetterhoff, Janet Schneider.

Second Row—Jean Wheat, Madeline Shinn, Betty John, Leona Kondziela, Jean Hammontree, Laura Steffel, Eleanor Steffel.

Third Row—Lilian Rose, Margaret Saurman, Carol Tuttle, Mary Jane Collins, Lucille Cole, Marion Mollhagen, Janice Keller, Agnes O'Dell.

Front Row—Joan Batcheller, Ruth Hankins, Lornajean Schneider, Lois Schantz, Evelyn Ludlow, Margie Schug, Louise Johnson, Rose Dombroski, Jane North.

Not in picture—Dorothy Gruler, Pat Behan, Evelyn Crawford, Alma Barber.

Girls Glee Club

The Girls Glee Club was composed of thirty-five comparatively new members this year, and so was not prepared to present many concerts as a club. They assisted the choir in the presentation of the Christmas Vesper Service, and sang at Commencement.

On March 22, the club itself appeared on the program at the annual concert given by the combined vocal and instrumental departments of the high school.

The girls went to Traverse City on May 18 to present two numbers at the Vocal Music Festival. They also appeared with other Girls Glee Clubs of this region in the massed performance in the evening under the direction of the critic and guest conductor of the day.

In the repertoire of the club appeared the following numbers: nightfall in Granada, Bueno; To a Wild Rose, MacDowell; Winter Lullaby, Kaven-Riegger; Calm as the Night, Bohm; Indian Love Call, Friml; Allah's Holiday, Friml.

Girls Sextet

The Girls Sextet, a popular music group, has made numerous appearances during the year. Since it is a small group, it is more able to appear on some occasions than one of the larger music groups.

At Christmas time the girls contributed two numbers to the afternoon Vesper Service. They sang a special arrangement of "Hark the Herald Angels Sing" and "Sleep of the Child Jesus." They sang two popular numbers at the January school dance sponsored by the Girl Reserves. The group has also appeared in programs of various club meetings in the community. Special numbers were presented at the graduation exercises and at the annual music festival in Traverse City.

The girls in the sextet are Joan Batcheller, Gloria Gerren, Lornajean Schneider, Joyce Smith, Mary Jane Collins, and Alyce Platt. Betty Dow substituted during Gloria's illness. Miss Silver is the faculty adviser.

The Boys Glee Club with thirty-five members is one of the largest PHS has ever had. It has received well-deserved praise for its performances throughout the year. The club sang at the Kiwanis and Rotary Club meetings as part of musical programs and were received with enthusiasm by the men. Last fall it appeared before the Michigan Education Association in Petoskey.

More formal appearances have been the two concerts at which the group sang. The first was an evening concert in March and the second a Sunday afternoon concert both of which included vocal and instrumental numbers.

The glee club was among the PHS music groups participating in the annual music festival in Traverse City on May 18 and was awarded high rating by the

critic judge. It appeared as an individual group in the afternoon and took part in the combined glee club numbers in the evening, which were under the direction of the critic judge.

For the final performances of the year the club contributed to the Class Night and the School Exhibition programs in June before the close of school.

In the repertoire of the boys glee club are: Song of the Jolly Rogers, Chudleigh-Shandish; Winter Song, Bullard; Steal Away, a Negro Spiritual; Ol' Man River, Kern; Song of the Galway Piper, Irish Folk Song, Sing Me a Chanty, O'Keefe—Wellsey; Vive La Mour, College Song; Secrets, Smith; The Open Road, Towner; Sea Gypsy, Clark.

Back Row—Bob Mattson, Bob North, Bill Adams, Dick Robinson, Walt Dow, Paul Hazelton, George Niswander. 3rd Row—Charles Johnson, Ralph Ernst, Bob Brown, Don Bassett, Fred Rose, Jim Townsend, Ed Weber, Al Linnell. 2nd Row—Martin Reber, Jack Highley, George Whitfield, George Bowman, Harry Cosgrove, Douglas Kirp, Don McCalmon, Gerald Jacobs, Gage Lovelace. Front Row—Jim Ream, Ray Fochtman, Lester Boody, Dave Watt, Bill Zipp, Harry Kurtz, Jack Campbell, Robert Benjamin.
Not in picture—Don Hodgkiss, Clifford Riley.



Boys Glee Club



Chorus

Back Row—Walt Dow, Al Linnell, Dave Watt, Ray Fochtman, Bill Zipp, Pat Campbell. 3rd Row—George Niswander, Don Bassett, Paul Hazelton, Henriette Gordon, Margie Schug, Shirley Houck, Letha Baird, Edwin Weber. 2nd Row—Joan Batcheller, Ruth Ann Schomberg, Madeline Shinn, Gladys Grimes, Virginia Van Leuven, Betty Lou Friend, Clara Louise Clapper, Elizabeth Jensen, Amy June Gokee, Gloria Gerren, Alyce Platt, Catherine George. 1st Row—Lois Schantz, Agnes O'Dell, Margaret Saurman, Maxine Bresseau, Betty Dow, Evelyn Ludlow, Sopia Lapeczynski, Georgie Murray, Joyce Smith, Jean Hammontree.

Not in picture—Orville Feather, Patricia Sik, Clifford Riley, Patsy Donnelly.

With the return of several members of last year's group and the helpful addition of many talented new members, the chorus has had an outstanding year. At the beginning of the year it contributed to the pep meetings by leading assembly singing. It sang for the impressive afternoon service given at Christmas time and presented two concerts in conjunction with the instrumental department. As in past years the chorus attended the annual musical festival in Traverse City on May 18 and sang in the afternoon program and was a part of the massed group which sang under the baton of the critic judge in the evening.

This year instead of the usual officers of former years, a Council was elected to take charge of the activities of the music groups. Members elected to this Council were: Mary Jane Collins, Joyce Smith, Paul Hazelton, Walter Dow, Dave Watt, and Fred Rose.

This group made the arrangements for a school dance sponsored by the vocal department and the annual picnic with the instrumental department. In December, an alumni dinner was planned for all the alumni who have formerly been in vocal music groups in PHS. It is hoped that this may become an annual event.

A combined recording machine and victrola, which has been a valuable aid in improving the departments singing and has added to their pleasure was purchased this year.

In the repertoire of the chorus are: Today There is Ringing, Christiansen; Were You There? Burleigh;

Soldiers Chorus, Gounod; Joyous Christmas Song, a French Folk Song; Finlandia, Sibelius; My Homeland, Cain; A Violin is Singing, A Ukranian Folk Song arranged by Koshetz; and two Russian Folk Songs, Dusk Along the River and Cossack Lullaby.

a Capella Choir

Twenty-two people make up the a Cappella choir, a newly-formed organization in the music department. Since it was not organized until the second semester it has not made so many appearances. The choir makes a more serious study of music along choral lines, and sings with no accompaniment.

This spring a special program was arranged which included excerpts from a cantata "The Crucifixion" and other sacred music which was presented in a Sunday afternoon concert at the high school auditorium. The group also sang at the Baccalaureate Service in June. The traditional choir robes were their costume.

Members of the choir are: Joan Batcheller, Lorna-jean Schneider, Betty Lou Friend, Betty Dow, Vernice Dalton, Evelyn Ludlow, Mary Jane Collins, Joyce Smith, Henriette Gordon, Alyce Platt, Lillian Rose, Nancy Ann Calzaretta, Gloria Gerren, Walter Dow, Al Linnell, George Bowman, Clifford Riley, Bill Zipp, Ray Fochtman, Fred Rose, Dave Watt, and Paul Hazelton.



National Honor Society

EVELYN BICE ... CHARLOTTE CAMERON ... ALBERT CRAWFORD ...
 JANET DANSER ... WILLIAM ELLIS ... RACHEL FETTIG ... ARTHUR
 HINKLEY ... EDSON LEE ... ALBERT McCABE ... JUANITA MOORE
 ... MARY CARLAND ... CLYDE COMSTOCK ... EUNICE CROTHERS
 ... IDA DOHERTY ... MARGUERITE HEIDRICK ... SARA JANE LIN-
 INGER ... HELEN PARMENTER ... VELMA SWEET ... OLIVIA ROBIN-
 SON ... MILDRED LEISMER ... RUTH FRYMAN ... VERUM DICK ...
 DOROTHY HALSTEAD ... FRED TRIPP ... CLINTON GALLOP ...
 PAUL WARREN ... NILA OTTO ... LORRAINE NEUMAN ... WANDA
 LEAR ... ROLLAND NORTH ... RAYMOND FOLEY ... WILLIAM Mc-
 CUNE ... LESTER PAGEL ... HELEN NILES ... LELIA ROBINSON ...
 WAYNE NEUMAN ... DONALD WELLS ... JACK JOHN ... ROBERT
 MILLER ... FRED CURTIS ... MILDRED CRAW ... DOROTHEA DU-
 CHAINE ... ELEANOR DUCHAINE ... DALON ELY ... ROBERT ENGLE
 ... ANDREW FOLEY ... CECIL McKEACHIE ... ROBERT WOODRUFF
 ... MARTIN BEER ... MARTIN GULESERIAN ... ESTHER JARMAN ...
 CHARLES MOORE ... ISABEL STEEN ... CATHERINE EDYVEAN ...
 LUCILE GERMOND ... ADA NESSNER ... RAYMOND NEUMAN ...
 BARBARA SALLER ... BEATRICE SCHMITT ... ELSIE STARMER ...
 RUTH TRIPP ... ROBERT MITCHELL ... RAYMOND SCHAAF ...
 LESTER STRICKLER ... GLADYS BROWER ... NAOMI HOOKER ...
 MARY REID ... RUSSELL SPALDING ... MERRILL STARK ... THUR-
 LOW STONE ... THELMA SULLIVAN ... JEAN WEBB ... DORIS
 BROWN ... ESTHER CHICHESTER ... MARGARET CHISTOPHER ...
 GORDON HENDRICKS ... RUTH MISENER ... RUTH ATKIN ... JOYCE
 CROTHERS ... ELEANOR FREDERICKSON ... FLOYD FRENCH ...
 JANE SAUNDERS ... LOUISE HINKLEY ... THOMAS FOCHTMAN ...
 EARL LAWRENCE ... DORIS REBER ... MABEL JOHANSEN ... MEL-
 VIN KNIGHT ... CATHERINE KIPP ... DOROTHY LE ROY ... HELEN
 MOORE ... NORMAN REED ... MILDRED BEHAN ... DORIS FRED-
 ERICKSON ... GORDON GUILLAUME ... WENDELL REHKOPF ...
 MAXINE WHITE ... CLEVELAND ANGUS ... PAUL ENGLE ... ED-
 WARD FOCHTMAN ... ZELDA FRYMAN ... ARLIE MORFORD ...
 LUCILLE NEUMAN ... BETTY SCHNEIDER ... ISABEL STARMER ...
 ABIGAIL GERMOND ... HELEN JESPERSON ... HERSCHEL MILLER
 ... ROBERT MILLER ... MARY BENJAMIN ... MARIAN DOHERTY ...
 MILDRED KEMP ... WILLIAM KING ... CHARLES MILLER ... WIL-
 BUR MINDEL ... STANLEY REID ... JUSTINE REBER ... ELIZABETH
 WILLIAMS ... GEORGIANA BROWN ... FREDERICK MILLER ...
 HELEN CHANDA ... LILLIAN CRAIG ... RAYMOND RICHMOND ...
 LETA WILLSON ... WILLIAM WORK ... VERA LAWRENCE ... RACHEL
 LINNELL ... WILLIAM NEUMAN ... CARL PETERSON ...
 FLORENCE SNYDER ... RICHARD BOWMAN ... WILMA
 CRITCHETT ... ERNESTINE EMBODEN ... FRED ERNST ... ANNA
 HOLZSCHU ... RUTH KAGE ... RUTH SWITZER ... VIRGINIA BUET-
 TNER ... VERNON KEMP ... DOLORES STERZIK ... BETTY TUN-
 SEND ... DON ANGUS ... HAROLD GUILLAUME ... HELEN HOFF-
 MAN ... MERLE LAMBERTSON ... LOTTIE BUDEK ... JAMES GARVIN
 ... RUTH OWEN ... ELEANORE WURST ... THOMAS BARTON ...
 JOHANNA BOYER ... THEO GUILLAUME ... WALTER MASTERS ...
 GERALDINE McKINLEY ... CATHRYN SWITZER ... HENRY BAUM-
 GARTNER ... PATRICIA BOWMAN ... LEOLA RUTH FRYMAN ...
 HELEN KELLER ... LILLIAN LEISMER ... JAMES BARTON ... NANCY
 ANN CALZARETTA ... WALTER DOW ... HARLOW KEATING ...
 DOLLY LUESING ... RALPH MILLER ... KATHRYN KELLEY ...
 ALBERT LINNELL ... JOYCE SMITH ... HELEN LA FLEUR ... BILL
 ZIPP ... STEPHANY SALISZ ... PAULINE BEHAN ... CELIA GOERKE
 ... HENRIETTE GORDON ... RALPH ERNST ... JIM DOHERTY ...
 LOIS SCHANTZ ... LYNETTA WHITE ...

The Petosega Chapter of the National Honor Society was organized in 1925 by Harold S. Bates, Principal of the High School. Miss Nellie Beebe has acted as faculty adviser since 1926. The Petosega Chapter has completed its fifteenth year with a total of 174 members in the chapter.

Candidates for membership are chosen from the upper twenty-five per cent of the junior and senior classes. Fifteen per cent of these candidates from this group are eligible for membership. During the last semester of the junior year five per cent of the members are elected in the society, and the remaining ten per cent are elected in their senior year.

Members chosen for the organization must possess certain outstanding qualities of scholarship, leadership,

character and service. They must also have a high scholastic record. The scholastic records are based on grades secured during the years from the ninth grade through the first semester of the twelfth grade. They must show initiative in promoting and directing school activities, demonstrate sincere school spirit, and be willing, cheerful and enthusiastic, in rendering any worthwhile service to the school.

The annual banquet was held at the Petoskey Bay View Country Club. The junior members were initiated at this time. Parents and members, alumni Honor Society members, and the high school faculty were present.

Officers for the year of 1939-1940 were Albert Linnell, president; Bill Zipp, vice-president; and Joyce Smith, secretary-treasurer.



Pep Club

Back Row—Cliff Newton, Ralph Ernst, Roger Weinrich, George Huzek, Vernice Dalton. Front Row—Dorothy Gruler, Mary Jane Collins, Bob Brown, Marion Mollhagen, Ruth Ann Schomberg. Not in picture—Bill Miles.

For the past thirteen years, the Pep Club has been a strong organization in developing school spirit. This year it did much more toward that end by introducing new yells and assembly singing of college pep songs and new school songs for PHS. The object of the club is to promote school spirit and good sportsmanship, to train cheerleaders, and to prepare pep meetings.

The membership in the club is limited to twelve, the number of new members determined by the number of members graduating.

To be eligible for membership, one must be active

in school activities, a booster and enthusiastic in school spirit.

This year seven students were admitted to the club: Marion Mollhagen, Ruth Ann Schomberg, Vernice Dalton, Dorothy Gruler, Roger Weinrich, George Huzek, and Bob Brown. Bob Brown is president, Bill Miles, vice-president, and Mary Jane Collins, secretary-treasurer. Bob and Bill have led the cheering at all the home and out-of-town games throughout the year. Miss Silver is the Adviser of the group.

The Varsity Club completed its second year of existence this spring under Coach Steve Sebo and president Bob Bursian. The club was organized in the spring of 1938 by Mr. Sebo with twenty-two athletes as members. The members of the club are the players who have won major athletic awards, rank high with their fellows in sportsmanship, character, personality, and cooperative spirit. The winning of a letter does not insure one of membership in the organization, but once a boy becomes a member, he is considered such until he withdraws his name.

The full meaning of the letter and its significance is enlarged and brought out by the fellowship in the club. A code of laws has been adopted by the club with main emphasis on promoting a true spirit of sportsmanship and clean living in school and in life as well as in

athletic competition.

There are no dues in connection with the club. Funds are raised through projects by the members and concessions at games. The club is not affiliated with any other athletic organization of other schools, its activities are designed by the members under the supervision of the faculty adviser.

The achievements during the past year have been chiefly the informal initiation of new members which held the attention of the school for a week last fall; the donkey basketball game against the Band this spring; the game ended 16-14 in favor of the athletes after an over-time; the concessions at the Alpena basketball game, a joint meeting with the Girl Reserves, and several other interesting programs.

Back Row—Clyde Hall, Clifford Newton, Glen Anys, Jack Zaiger, Charles Baumgartner, Ed Stanley,
2nd Row—Ted Garby, Henry Kuberski, Meredith Fall, Fred Zipp, Bill Zipp, Dave Ross, Ralph Ernst,
Maynard Bailey, Coach Sebo. 1st Row—Dick Bonsecours, Harold O'Donnel, Dick Krusell, Roger Weinrich,
Bob Bursian, Dick Harbaugh, Bob Copper, Dale Switzer.

Varsity Club





Toppers

Back Row—Paul Notestine, Lynetta White, Betty Hand, Agnes O'Dell, Eleanor Fettig, Gerald Steffel. Second Row—Miss Farnsley, Jack Ruggles, Gladys Grimes, Ruth Morrow, Kathleen Mulligan, Irene Stolt, Deora Taylor, Eugene Wallace, Mrs. Stech. Front Row—Ralph Morrow, Don Bare, Wayne Grossman, Josephine Kerwin, treasurer; Ida La Tocha, secretary; Herb Hopper, vice-president; Elsie Swenor, president; Jim Doherty, John Hess.

The Toppers Club, a new organization, was formed in the fall of 1939. The faculty leaders are Miss Alice Farnsley and Mrs. Rosalie Stech.

The purposes of the club are to try to be of service to the school and to give the students an opportunity for social life.

The membership of the club includes eleven boys and eleven girls chosen exclusively from the senior class. In the spring of the year the members select Juniors to carry on the work for the coming year.

Although the club is new, it has had a successful year. The organization sponsored a dance at the beginning of the year, and at Thanksgiving time it assisted the Candle Club in distributing Thanksgiving baskets.

Outstanding functions have included a Christmas

party in the music room and a sleigh-ride party at the municipal cabin; both were highly enjoyed by the members.

Each Topper, as each member is called, has a pin with a tiny emblem in the center which symbolizes good students, good advisers, and a grand school. On these pins is engraved "Toppers PHS 1940."

The meetings are held twice a month during the school year and usually consist of informal business discussions. The president takes charge of all the meetings and is assisted by the vice president, secretary, and treasurer, as well as the faculty advisers. The officers of the club are: president, Elsie Swenor; vice president, Herbert Hopper; secretary, Ida La Tocha; and treasurer, Josephine Kerwin.

The Petoskey debate squad opened its activities this year with an inter-scholastic debate tournament. In this tournament Petoskey was represented by Lucille Cole, Alfred Frank, Martha Gibson, Henriette Gordon, Paul Hazelton, Audrey McPherson, John Murphy, Lornajean Schneider, and Jim Townsend. Of these Fred Rose, Bill Zipp, and Al Linnell under the capable direction of A. T. Rolph succeeded in remaining in the competition up to the quarter finals of the state elimination series. In order to be eligible for the elimination series it was necessary for Petoskey to win at least three out of four preliminary debates. Petoskey did this by drawing a bye in the first round, defeating Alpena in the second, losing to Traverse City in the third, and winning from Boyne City in the fourth.

After the preliminaries the Petoskey trio continued on its path of conquest by winning the regional tournament at Boyne City. To win this tournament and its resulting trophy Petoskey had to defeat both East Jordan and Alpena the same day that Alpena won from Boyne City. Greatly encouraged by this victory and its

trophy, the boys from Petoskey marched confidently on to a two to one decision over Traverse City.

Then Petoskey, one of the eight schools remaining in the debate competition out of an original two hundred in the state, went farther south to match its skill with that of Grand Rapids Central, pausing on the way for a radio debate with Lansing Eastern High School over the Michigan State College station WKAR. At Grand Rapids, however, Petoskey met its Waterloo and was forced out of the contest. But as Petoskey had never gone so far in state debate competition, the team retired feeling that they had done their job well.

G. R. Central continued on to win the State Debate Championship at Ann Arbor.

Of this year's trio only Fred Rose will be back next year, but Coach Rolph has several good prospects in view and so we may look forward to another successful season.

The question for debate this year was "Resolved, That the Federal Government Should Own and Operate the Railroads."

Top Picture—Left to right—Al Linnell, Bill Zipp, Fred Rose. Bottom Left—Fred Rose, Alfred Frank, Lornajean Schneider, Bill Zipp, Paul Hazelton, Martha Gibson, Lucille Cole. Bottom Right—Audrey McPherson, Al Linnell, Henriette Gordon, Coach A. T. Rolph, Jim Townsend.

Debate



Candle Club



Top Left—Pauline Behan, Shirley Wallace, Beverly Zipp, Betty Dow, Martha Gibson, Top Center—Verna Ballard, Helen Roberts, Miss Bergeman, Joyce Smith, Priscilla Zuiderhoek, Top Right—Joan Batcheller, Joyce Smith, Jean Wheat, Betty Dow. Bottom Left—Miss Bergeman, Joan Batcheller. Bottom Center—Alyce Platt, Ferne Athearn, Stephany Salisz. Bottom Right—Helen La Fleur, Pauline Behan, Shirley Wallace, Beverly Zipp, Betty John.
Not in picture—Shirley Craig, Henriette Gordon, Martha Gibson, Lois Schantz, Virginia Van Leuven, Lillian Rose.

The Candle Club, composed of twenty junior and senior girls, has, under the direction of Miss Ruth Bergeman, proved to be one of the school's most active clubs. Instead of conventional officers, the club is under a general chairman who appoints a different leader for each month. There is also an official treasurer and an historian. The officers for the year were: Helen La Fleur, historian, and Betty Dow, treasurer. Chairmen included Virginia Van Leuven, Betty John, Joan Batcheller, Betty Dow, Alyce Platt, Stephany Salisz.

The Club's purpose is to promote friendship and good will among all students, and to support all the activities of the school. The second Thursday of every month is reserved for a meeting in which the plans for that month are discussed.

The activities of the club have been numerous and worthwhile. The girls followed a program similar to the one last year. They distributed Thanksgiving baskets in November, sang carols at Christmas time, and gave a Sadie Hawkins Dance in January, at which the girls chose their partners. Perhaps the most interesting activity of the year was during the week before St. Valentine's Day when the girls were "Heart Sisters," closing with a gay dinner party in the cafeteria where the Heart Sisters were revealed. During the last three months of the school year there was a dinner for the women of the faculty in April, a Mother's Day Tea in May, and a final meeting in June with a farewell party for the senior members.

The Dramatics Club, under the joint direction of Mrs. Rosalie Stech and Miss Alice Farnsley, is an extra-curricular subject offered to all the students of Petoskey High School.

At the beginning of the first semester the members elected as their officers for the year: Henriette Gordon, president; Lornajeane Schneider, vice-president; Martha Gibson, secretary; and Betty Lou Friend, treasurer.

Mrs. Stech is in charge of the club the first semester and she teaches the technique of the art of walking, talking, acting, and posing. She also relates to the members the history of the drama. The first few weeks are devoted to the presenting of pantomimes to give the members opportunity to practice the proper acting expressions under Mrs. Stech's supervision. Following these, the class presents a number of one-act plays. Among the best of these were: "The Goblin", with Lois Schantz, Walter Dow, Charles Johnson, and Albert Linnell taking part. The play was given twice, once before the English section of the M. E. A. and once before the high school. "Welsh Honeymoon" also was given twice, before the Presbyterian Guild and the high school. Arlene Perry, Priscilla Zuiderhoek, Charles Johnson, Bob Mattson, and Alfred Frank played the parts. Marion Mollhagan directed the play "Sugar and Spice", which was given before the Dramatics Club. Pat Stafford, Jack Lee, Lucille Dombroski, Pat Campbell, and Lornajeane Schneider took the parts.

There were two other one act plays given before the club, they were: "And There Was a Light" directed by Marjorie Koboski, with Eleanor Breseman, Louise Nowland, Ann Burek, and Elsie Swenor taking the parts.

"Good Medicine" directed by Henriette Gordon, with Paul Hazelton, Betty Lou Friend, and Henriette Gordon, was the last play given for the club.

As a part of its program, the Dramatics Club sponsored several activities to raise money. The club's concession at the Petoskey-Charlevoix game here was a very successful one, and the Valentine Dance given in the gym on February 16, was one of the years' most outstanding and enjoyable functions. Near the end of the semester, a club pin was chosen by a committee headed by Lucille Cole. This semester's program ended with the pledging of money to the Band for their uniform fund and the appointment of a committee to sponsor a sale to raise this money.

The second semester's work of the Dramatics Club is led by Miss Farnsley. The members study the stage, scenery, costumes, and properties and become familiar, with all things which have importance in the production of a play. A group of one-act plays is also given this semester with the members of the club playing the roles.

This year Miss Farnsley taught a new phase of dramatics to the club. She organized the members into small groups and each of these groups put on an impromptu play. The purpose of this is to have the individual develop the ability to depend upon himself and to be at ease while on the stage.

The Dramatics Club meets every Tuesday afternoon at four o'clock in the auditorium or in the sponsor's room. The year '39-'40 has been successful for the Dramatics Club which is rapidly becoming one of the school's outstanding organizations.

Back Row—Alfred Frank, Jim Townsend, Wendell Giggey, Edwin Weber, Robert Gibson, Dick Robinson, Bill Adams, Louise Nowland, Lucille Dombroski. Second Row—Miss Alice Farnsley, adviser, Gladys Grimes, Rose Dombroski, Elsie Swenor, Betty Stark, Marjorie Koboski, Evelyn Ludlow, Eleynor Breseman, Virginia DePew, Pat Stafford, Jean Liberty, Shirley Ernst, Mrs. Stech, adviser. Third Row—Charles Johnson, Maxine Brasseau, Jeanette Hall, Margaret Kemp, Ruth Brill, Leona Kondziela, Priscilla Zuiderhoek, Vernice Dalton, Marion Mollhagen, Janice Keller, Marilyn Lee, Ann Burek. Front Row—Arlene Perry, Lucille Cole, Lynetta White, Lornajeane Schneider, Martha Gibson, Henriette Gordon, Betty Lou Friend, Ruth Ann Schomberg, Mary Rita Hegener, Nanette Paulus.
Not in picture—Gladys Black, Evelyn Campbell, Nanette Paulus.

Dramatics





Quill and Scroll

GERRY McKINLEY . . . HENRY BAUMGARTNER . . . NANCY ANN
CALZARETTA . . . RUTH FRYMAN . . . JOYCE SMITH . . . PAT BOWMAN
. . . WALTER DOW . . . MARIAN HARTUNG . . . DOLLY LUESING . . .
DAVID WATT . . . BETTY JEANNE WAITE . . . JIM DOHERTY . . . DICK
BONSECOURS . . . LUCILLE COLE . . . VERNICE DALTON . . . AUDREY
FOX . . . BOB BENJAMIN . . . JAMES CRADDOCK . . . CELIA GOERKE . . .
BETTY HAND . . . JACK LEE . . . LYNETTA WHITE . . . BILL ZIPP . . .

Membership in the Quill and Scroll, the International Honorary Journalistic Society, represents the highest distinction that can be awarded a high school journalist.

According to the constitution members of Quill and Scroll must be chosen from the students enrolled in high school who at the time of their election meet the following requirements: (1) They must be of at least junior standing. (2) They must be in the upper third of their class in general scholastic standing at the time of their election. (3) They must have done superior work in some phase of journalistic or creative endeavor. (4) They must be recommended by the supervisor or by the

committee governing publications. (5) They must be approved by the international secretary-treasurer.

The new members receive a gold badge, which stands for publication achievement, and a year's subscription to the Quill and Scroll magazine.

The only charter member in the club at present is Joyce Smith. The officers are Jim Doherty, president; Dick Bonsecours, vice-president; Audrey Fox, Secretary-Treasurer. Other members are: Bill Zipp, Lynetta White, Bob Benjamin, Betty Hand, Jack Lee, Celia Goerke.

The faculty advisers are Mrs. Stech and Mr. McDonald.

Shooting the shot
The luncheon lineup

Keep to the right, please

A little powder and little paint
makes the girls like what they
ain't

Miss Bergeman mashes potatoes
for the Girl Reserves dinner

The Petosegan Pic's get the once
over

The pulse of our education

C'mon Blue! C'mon White!

Pep Club leads Pep Meeting

Girls Gym classes practice tumb-
ling

Typing students work for speed
and accuracy

The trophy case

Oh! what fun it is to ride in a one
horse open sleigh



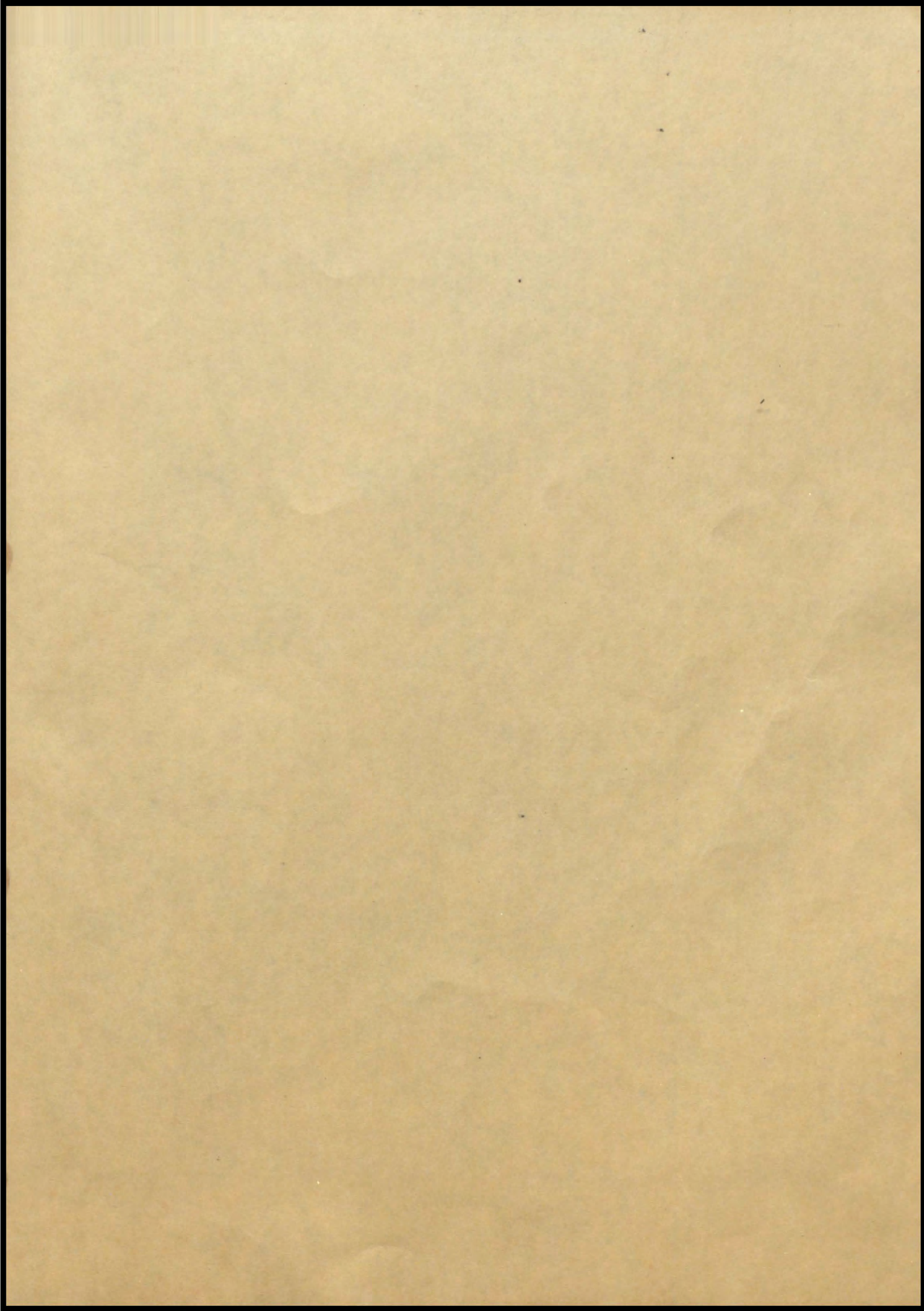
Printed in Petoskey by
C. E. GARVIN CO.
 Engraving by
G. R. GRUBB CO.
 Champaign, Ill.

Since the photographs for the 1940 Petosegan were taken by several photographers the editors wish to give proper credit and herewith present this record of photographers.

CREDIT LIST
 Code

A—Alton Studio
 B—P. L. Becker
 C—Merton Carter (Review Printing Co.)
 F—Foley's Photo Art Shop
 N—Northern Studio
 S—Staff (A. Frank, B. Benjamin & C. Coolbaugh)
 MG—Martha Gibson
 AM—Audrey McPherson
 V—Virginia Van Leuven
 JC—Jim Craddock
 K—Harry Kurtz
 MC—Mary Jane Collins

Frontispiece—Pictures by Foley. Engraving & Color by Grubb:
 Dedication—S
 Administration—S:S
 Faculty I—S:S:S:S:S:S:S—
 S:S:F:S:A:S:S:S
 Faculty II—S:S:S:S:S:A:S:
 S:—S:S:S:S:S:
 Senior Officers—S:S:S:—F:A:
 Senior 1—F:F:N:F:N:A:F:N
 —N:F:B:F:A:N:A:F
 Senior 2—A:F:F:F:F:A:F:F—
 N:F:N:A:F:F:F:A
 Senior 3—B:F:F:A:B:N:B:B—
 N:F:F:F:F:N:F:B
 Senior 4—N:A:B:F:F:A:F—
 N:F:N:F:F:A:A:F
 Senior 5—F:F:F:F:F:A:N:N—
 N:F:B:F:B:F:A:A
 Senior 6—A:N:N:F:N:F:F—
 B:F:F:A:A:N:F:F
 Senior 7—F:F:F:A:F:B:N:N—
 N:B:F:F:B:A:F:
 Snaps I—AM:MG:MG:AM:MG:—V:JC:
 MG:—S:S:K:AM:MG:—S:AM
 :AM:—S:S:
 Senior Elect—S:S:S:A:S:S:S:A—
 S:S:S:S:S:S:S:
 Senior Personals—All Staff.
 Underclassmen I, II, III, Alton Studio—1st Snapshot C—2nd S.
 Football—All by Carter of the Review except center one by Kurtz.
 Basketball—Staff.
 Minor Sports—Staff
 Minor Sports—Staff
 Snap II—S:S:S—S:S:S:—
 S:S:S:—C:C:—C:F:—
 S:S:MC:K:S:
 Pe'osegan—Staff
 Hi-Light—All staff but last:C
 Hi-Y—F:
 Girl Reservec—Staff.
 Band—F:
 Orchestra—F:
 Girls Glee—F:
 Boys Glee—F:
 Chorus—F:
 Pep Club—F:
 Varsity Club—F:
 Toppers Club—F:
 Debate—Staff
 Candle Club—Staff
 Dramatics—F:
 Snaps III—Staff







Amelia
J. ...