





THE STAFF

JAMES H. GARVIN Editor-in-Chief

RUTH M. OWEN Business Manager

JOHN F. McDONALD Faculty Advisor

The staff wishes to gratefully acknowledge the friendly advice and assistance of John F. McDonald, without which this book would not have been possible.

1938 PETOSEGAN

PETOSEGAN

1938

VOLUME NINE

BEING THE YEAR BOOK OF
PETOSKEY HIGH SCHOOL

Published by the

Senior Class

1938

Three

FOREWORD

As an expression of the activities of the school year, we offer you the 1938 PETOSEGAN. May its pages bring back half-forgotten incidents of your high school days when you chance idly to open it in some distant future time, and may they awaken many pleasant memories for you.



DEDICATION

With the knowledge in mind of the helpful, kind, and courteous manner in which she has spent her time for the betterment of Petoskey High School and the happiness of all students in Petoskey High School, we, the Senior Class of 1938, dedicate Volume Nine of the PETOSEGAN to

ESTHER JARMAN



H. C. SPITLER, B. A., M. A.
Superintendent



F. S. JACOBS, B. S., M. A.
Principal



THE FACULTY

Left to right, top row: Sebo, Roberts, Bartlett, Beebe, MacMillan, Bond, McDonald
Trickey.

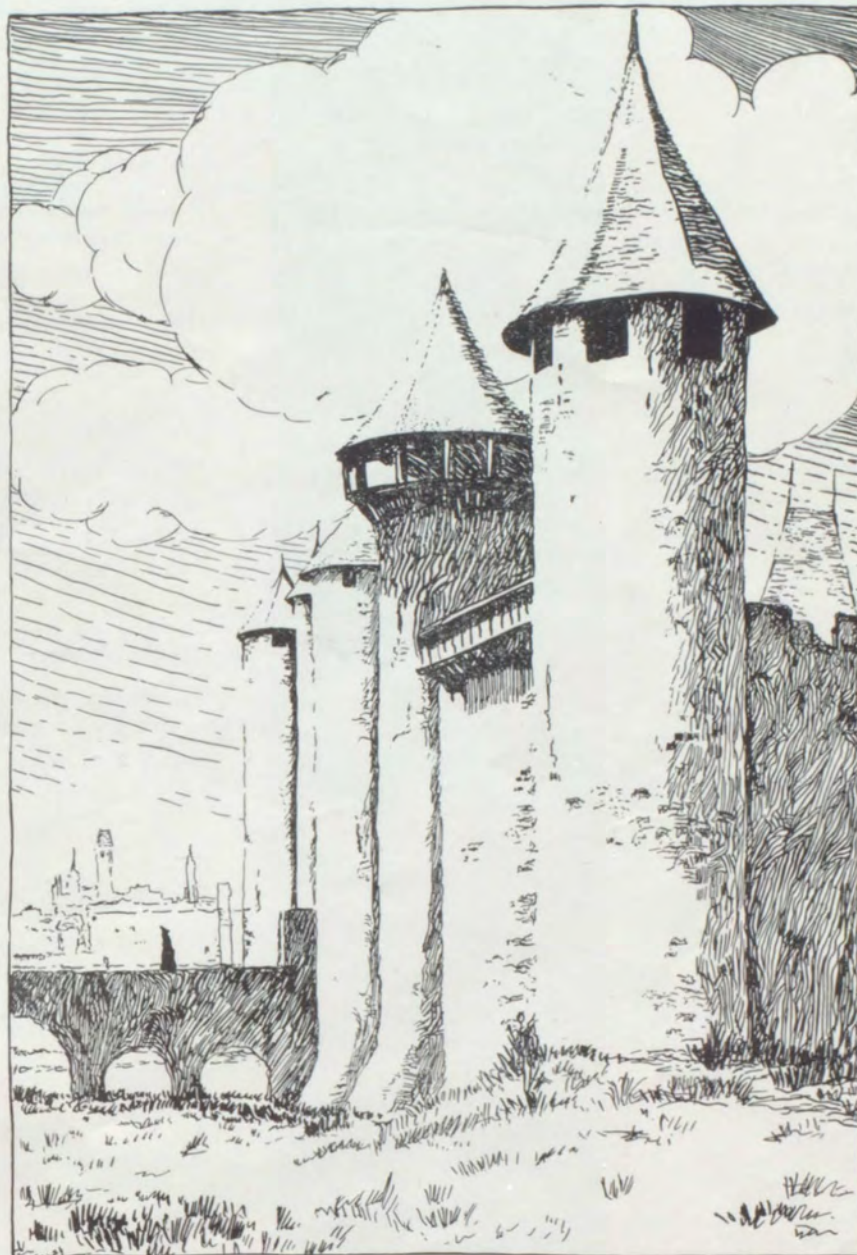
Middle row: VanNess, Farnsley, Lombard, Silver, Stech, Harner, Wagenvoord,
Crothers, Wolkenstein, Pailthorp.

Bottom row: Jarman, Wyatt, Schreur, Bergeman, Lawrence, Metzger, Jensen,
Ryerse.

Lynn Bartlett, A. B.	Albion College; University of Michigan.	<i>Chemistry, Mathematics, Ass't Coach.</i>
Nellie I. Beebe, A. B., M. A.	University of Michigan; French School. Middlebury, Vt.; Cleveland French School, Western Reserve University.	<i>Latin, French</i>
Ruth Bergeman, B. A.	Northern Central College, Naperville, Ill., B. A.; Iowa State Teachers College.	<i>English, Debate.</i>
Linford B. Bond, A. B.	Western State Teachers College, A. B.; University of Michigan.	<i>Physics, Mathematics.</i>
Ruth Crothers, Ph. B.	Central State Teachers College; University of Chicago, Ph. B.; University of Michigan.	<i>English, Library.</i>
<i>Alice L. Farnsley</i> Alice L. Farnsley, A. B.	Hillsdale College, A. B.	<i>English, Latin.</i>
Elza Harner	Cleary College, Ypsilanti.	<i>Secretary to Superintendent.</i>
Esther Jarman		<i>Secretary to Principal.</i>
Mildred Jensen, A. B.	University of Michigan, A. B.	<i>Biology, Mathematics.</i>
Grace Waldo Jessop	Smith College; Michigan State Normal College.	<i>Opportunity Room.</i>

THE FACULTY

Nina Lawrence, A. B.	Western State Teachers College, A. B.	<i>Physical Education.</i>
Annabell Lombard	Michigan State Normal College; Lansing Business University; Ferris Institute.	<i>Commercial Department.</i>
Walter J. MacMillan, B. S.	Olivet College; Sir George Williams College (Chicago and Lake Geneva, Wis.); Michigan State Normal College, B. S.	<i>Physical Education.</i>
John McDonald, A. B., M. A.	Grand Rapids Junior College; Western State Teachers College, A. B.; University of Michigan, M. A.	<i>Social Sciences, Vocations.</i>
Constance Metzger, A. B.	Kalamazoo College, A. B.	<i>Social Science, English.</i>
Frances Pailthorp	Olivet College; University of Michigan; Chicago Art Institute; one year foreign travel.	<i>Art.</i>
Russell I. Roberts, B. S.	Northern State Teachers College, B. S.; Western State Teachers College.	<i>Manual Arts.</i>
Helen M. Ryerse, B. S.	Michigan State College, B. S.	<i>Home Economics.</i>
Mary Jane Schreur, A. B.	Central State Teachers College, A. B.	<i>Mathematics.</i>
Steve Sebo, B. S.	Michigan State College, B. S.	<i>Coach, Physical Education.</i>
Dora Silver	Central State Teachers College; Western State Teachers College; University of Michigan.	<i>Music, Voice and Piano.</i>
Rosalie A. Stech, A. B.	Indiana University, A. B.; University of Chicago.	<i>English, Dramatics.</i>
T. Arthur Treloar	Northern State Teachers College; University of Wisconsin.	<i>Manual Arts.</i>
S. M. Trickey, B. Mus.	Bush Conservatory of Music; University of Illinois, B. Mus.	<i>Instrumental Music.</i>
Arlene D. VanNess, A. B.	Central State Teachers College, A. B.; Northern State Teachers College; University of Michigan graduate study.	<i>History.</i>
Wilma Wagenvoord, B. S.	Michigan State College, B. S.	<i>Home Economics.</i>
Pauline Wolkenstein	Northern State Teachers College; Central State Teachers College.	<i>English.</i>
Virginia E. Wyatt, B. S.	University of Michigan, B. S.	<i>Social Science.</i>



SENIORS

Grace Anderson

"Her heart is as light as her eyes are bright."

Glee Club, 2, 3, 4; Chorus, 3, 4; Intramural, 3.



Marion Annable

"Kind hearts are more than coronets, and simple faith than Norman blood."

Dramatics, 2, 3, 4.



Leonard Barney

"If words were instruments, he'd be a brass band."

Glee Club, 1; Chorus, 1.



Tom Barton

"Strong minds are often those of which the noisy world hears the least."

Levering High School, 1, 2; Intramural, 3, 4; Honor Society, 4; '38 Sr. Play "Lady of Letters", 4.



Dorothy Behan

"A true friend—if there ever was one."

Intramural, 4; G. A. A., 4; Sub Deb Club.



Wayne Booth

"His stature is small, but his thoughts are large."

Intramural, 1, 2, 3, 4.



Johanna Boyer

"Merrily, merrily shall I live now."

Class Vice-President, 2, 3; Glee Club, 2, 3, 4; Chorus, 4; Intramural, 2, 3.



Bethel Brecheisen

"She walks, she walks; ever in the search for knowledge."

Glee Club, 2, 3; Chorus, 3; Intramural, 2, 3, 4.



Louise Brill

"She packs all her troubles in her trunk and sits on the lid and laughs."

Glee Club, 2, 3, 4; Chorus, 3, 4; Intramural, 2, 3, 4; Track, 2; Baseball, 2, 3, 4; Tennis, 2, 3, 4; G. A. A., 2, 3, 4; Student Council, 3, 4; Dramatics, 2, 4; Sub Deb Club, 4.



Richard Brown

"Work! I know thee not."

Class President, 3; Intramural, 2, 3, 4; Pasketball, 1; Football, 1; Hi-Y, 2, 3, 4 (Sec. Treasurer, 3); Student Council, 2; Student Athletic Manager, 3, 4.



Lottie Budek

"She is true to her word, her work, and her friends."

Valedictorian; Class Secretary, 4; Intramural, 1, 2, 3, 4; Track, 1, 2; G. A. A., 1, 2, 3, 4; Honor Society, 3, 4 (Sec. Treasurer); Student Council, 4; Dramatics, 2, 3; Petosegan Staff, 4.



Mary Burek

"O'er the dance floor trips she lightly, ever gay, and chattering brightly."

Glee Club, 1; Intramural, 1, 2, 3, 4; Track, 1, 2, 4; Baseball, 1, 2, 3, 4; Tennis, 1, 2; G. A. A., 1, 2; Dramatics, 1, 2.



Stan Cadwallader

"He never burnt the midnight oil—in search of useless knowledge."

Intramural, 1, 2, 3; Football, 2, 3; Track, 2; Baseball, 2, 3, 4.



Richard Cascaddan

"Sigh no more, ladies, sigh no more."

Football, 3, 4; Baseball, 3, 4.



Arthur Chattaway

"His only labor was to kill time."

Intramural, 1; Football, 4; Basketball, 1, 2, 3, 4; Varsity Club, 4.



Vernon Cook

"A young man who blushes is better than one who turns pale."

Charlevoix High School, 1 and 2; Glee Club, 4; Chorus, 4; Track, 3, 4.

Kathryn Donnelly

"Her voice was ever gentle and low; an excellent thing in a woman."

Glee Club, 1, 2, 3.



Alice Dunn

"One of the few so rare, of those with fiery hair."

Intramural, 1, 2, 3, 4; Baseball, 1, 2, 3, 4; Dramatics, 1, 2, 3, 4; Student Council, 2; '37 Jr. Play "The Youngest" 3; '38 Sr. Play "Lady of Letters", 4.

Mary Feily

"Still waters run deep."

Glee Club, 2, 3; Intramural, 2, 3, 4; Track, 2, 3, 4; Baseball, 2, 3, 4; G. A. A., 2, 3, 4; Student Council, 4; Sub Deb Club, 4.



Henry Fochtman

"Little man—what now?"

Football, 1, 2, 3, 4; Basketball, 2.

Irene Foltz

"Always quiet, brave, and true."

Glee Club, 3, 4; Chorus, 3, 4; Intramural, 1, 2, 3.



Jim Garvin

"All the great men of history have died; I feel rather ill myself."

Salutatorian; Class Vice-President, 2; Class President, 4; Band, 1, 2, 3, 4; Orchestra, 1, 2, 3, 4; Hi-Y, 2, 3, (Sec. Treasurer, 4); Honor Society, 3, 4 (President 4); Student Council, 4 (President); Hi-Light Managing Editor, 4; Petosegan, Editor-in-Chief, 4; Glee Club, 4; Clarinet Quartet, 3.

Homer Golden

"Breathes there a man with soul so dead, who never to himself hath said, 'I'll have one minute more in bed?'"

Glee Club, 4; Intramural, 1, 2, 3, 4; Tennis, 1, 3; Hi-Y, 1, 2, 3; Pep Club, 2, 3, 4; Cheer Leader, 1, 2, 3, 4.



Theo Guillaume

"On the highest cliffs of fame, I would some day paint my name."

Glee Club, 1, 2, 3, 4; Chorus, 3, 4; Intramural, 1, 2, 3, 4; Track, 1, 2; Baseball, 2, 3, 4; Tennis, 1, 2, 3, 4; Golf, 1; G. A. A., 2, 3, 4; Hi-Light Staff, 4.

Gayle Hartung

"I have no other but a woman's reasons I think him so, because I think him so."

Glee Club (Sec. Treasurer) 2; Intramural, 2; G. A. A., 2; Dramatics, 2, 4; '37 Jr. Play "The Youngest", 3; '38 Sr. Play, "Lady of Letters", 4; Hi-Light Staff, 4.



Rachel Hawkes

"A quiet lass; there are but few who know the treasure hid in you."

Glee Club, 1, 2, 3, 4; Chorus, 3, 4; Intramural, 1, 2; G. A. A., 2; Dramatics, 2.

Edward Hoffman

"He has the countenance of the innocent, but he is a rogue at heart."



Georgia Houts

"When joy and duty clash—let duty go to smash."

Glee Club, 2; Intramural, 1, 2, 3, 4; Track, 1, 2; G. A. A., 1, 2; Dramatics, 4.

Alton Howden

"Genius is the ability to avoid work."

Glee Club, 2, 3, 4; Chorus, 4

Corinne King

"A jolly lass chuck full of fun—she's always nice to everyone."

Glee Club, 4; Chorus, 4; Intramural, 3, 4; Dramatics (President), 4; Operetta "Captain of the Guard", 4; Girl Reserves, 4.

Helen Koper

"Most friendship is feigning, most loving mere folly."

Glee Club, 1; Intramural, 1, 2, 3; Track, 1, 2; Baseball, 1; Tennis, 1; G. A. A., 1, 2.

Peter Lites

"A little nonsense now and then is relished by the best of men."

Baseball, 3, 4; Hi-Light Staff, 4.

Nancy Mania

"Her heart is like the moon—always changing; but there's always a man in it."

Dramatics, 3; '37 Jr. Play, "The Youngest", 3.

Virginia Meyer

"She talks incessantly, an echo hasn't half a chance."

Boyne Falls High School, 1; Glee Club, 4; Chorus, 4; Intramural, 2, 3; Dramatics, 3, 4; Hi-Light Staff, 4; '38 Sr. Play "Lag of Letters", 4; Girl Reserves, 4.

Ralph O'Dell

"For he is just the quiet kind whose nature never varies."

Basketball, 1.



Marguerite Kerwin

"Sweet and stately with all grace."

Glee Club, 2; Intramural, 1, 3; Tennis, 2; G. A. A., 1, 2.



Eleanor Konle

"A very gentle maid and of good conscience."

Intramural, 1, 2, 3, 4; Track, 1, 2, 4; G. A. A., 2, 3, 4.



Kathryn Lancaster

"We would—and we would not."

Glee Club, 1, 2, 3; Chorus, 3, 4.



Waunetta McMillan

"Gentle speech; beneficent of mind."

Intramural, 1, 2, 3.



Walter Masters

"Men of few words are the best men."

Glee Club, 3; Hi-Y, 2, 3, 4; Honor Society, 4.



Al Murner

"And again I gazed from the schoolroom window with a wistful sigh—Oh! why should life all labor be?"

Football, 1, 2, 3, 4; Basketball, 1; Track 1.



Ruth Olsen

"A mighty hunter, and her prey was man."

Intramural, 2, 3; Dramatics, 2; Girl Reserves, 4.

Committee

Kathryn Lancaster
Waunetta McMillan

Virginia Meyer
Ralph O'Dell

Ruth Olsen
1938

Mildred Otto

"Talents differ; all is well and wisely put."

Glee Club, 2; Intramural, 1, 2, 3, 4; Track, 1, 2.



Ruth Owen

"Queen of the keyboard, with six and thirty black slaves and two and fifty white."

Glee Club, 1, 2, 3, 4; Chorus, 3, 4; Orchestra, 1, 2, 3, 4; Intramural, 1, 2, 3, 4; Track, 1, 2; Baseball, 1, 2, 3, 4; Tennis, 1, 2, 3, 4; G. A. A., 1, 2, 3; Honor Society, 3, 4; Intramural Debate, 1, 3; Operetta, "Captain of the Guard", 4; Girls Sextet, 4; Hi-Light Staff, 4; Petosegan Staff, 4.

Jay Packard

"Nobody would suppose it, but I am naturally a bashful man."

Chorus, 3, 4; Band, 4; Orchestra, 4; Student Council, 4; '37 Jr. Play, "The Youngest", 3; '38 Sr. Play, "Lady of Letters", 4.



Maxine Phillips

"Happy am I, from care I am free; oh, why can't they all be happy like me?"

Band, 3, 4; Orchestra, 3, 4; Intramural, 3; Baseball, 3; Tennis, 3; G. A. A., 3; '38 Sr. Play, "Lady of Letters", 4.

Walter Pruss

"Men have died from time to time, and worms have eaten them—but not for love."

Glee Club, 4; Band, 2, 3; '38 Jr. Play, "Big Hearted Herbert", 4; '38 Sr. Play, "Lady of Letters", 4.



Thelma Reader

"Silence in woman is what speech is to man."

Intramural, 2, 3.

Robert Reber

"Twenty thousand questions within a day have almost turned our heads to grey."

Class Sec. Treasurer, 3; Glee Club, 4; Band, 1, 2, 3, 4; Orchestra, 2, 3, 4; Intramural, 1, 2, 3, 4; Tennis, 3, 4; Hi-Y, 2, 3, 4; Brass Sextet, 3, 4; '38 Sr. Play, "Lady of Letters", 4.



Wayne Reber

"He stoops for nothing but the door."

Glee Club, 3, 4; Chorus, 3, 4; Band, 1, 2, 3, 4; Intramural, 1; Basketball, 1; Operetta, "The Captain of the Guard", 4.

Wilber Reber

"Of the wealth of facts and fancies that our memories may recall; the old school-day romances are the best ones after all."

Glee Club, 1, 4; Band, 1, 2, 3, 4; Orchestra, 1, 2, 3, 4; Intramural, 1, 2, 3, 4; Tennis, 3; Hi-Y, 2, 3, 4; '37 Jr. Play "The Youngest", 3; Brass Sextet, 3, 4; '38 Sr. Play, "Lady of Letters", 4.



Phil Rehkopf

"And this maiden she lived with no other thought than to love and be loved by me."

Glee Club, 1, 2, 3, 4; Chorus, 3, 4; Football, 1, 2, 3, 4; Basketball, 2, 3; Hi-Light Staff, 4; Varsity Club, 4.

Jean Rigg

"Scholar, athlete, rich in lore; she's all this and more."

Class President, 2; Intramural, 1, 2, 3, 4; Baseball, 1, 2, 3, 4; G. A. A., 2; Student Council, 2, 3; '37 Jr. Play, "The Youngest", 3; Pep Club, 4; Hi-Light Staff, 4; Petosegan Staff, 4; Sub Deb Club, 4; '38 Sr. Play, "Lady of Letters", 4.



Paul Ross

"Who conquers me will find a stubborn foe."

Intramural, 1; Football, 2, 3, 4; Basketball, 2, 3, 4; Track, 2, 3, 4; Baseball, 2, 3, 4; Varsity Club, 4.

Eileen Schmidt

"Silence is all that eloquence can be."

Intramural, 1, 2, 3, 4; Track, 1, 2; Tennis, 4.



Phyllis Schmitt

"A jolly good gal with ready wit—full of the dickens and good intentions."

Class President, 1; Glee Club, 2, 3, 4; (Vice Pres. 3, 4); Chorus, 3, 4; Girls Sextet, 3, 4; Intramural, 1, 2, 3, 4; Track, 1; Baseball, 2, 3; Tennis, 2, 3; G. A. A., 2, 3; Pep Club, 3, 4; Operetta, "Captain of the Guard", 4; '38 Sr. Play, "Lady of Letters", 4; Sub Deb Club, 4.

Alice Shinn

Alice Shinn

"I make the most of all that comes, the least of all that goes."

Glee Club, 1, 4; Band, 1, 2, 3, 4; Intramural, 1, 2, 3; G. A. A., 1, 2, 3; Dramatics, 3; Hi-Light Staff, 4.



Sterling Sluyter

"Nonsense and study do not agree; I'm sure the latter's not in me."

Glee Club, 4; Band, 1, 2, 3; Intramural, 2, 4.

Bill Smith

"Content to follow when we lead the way."

Intramural, 1, 2, 3.



Dorothea Snyder

Dorothea Snyder

"A woman who to her business tends, and careth for her male friend."

Glee Club, 1, 2, 3, 4; Chorus, 3, 4; Orchestra, 1, 2, 3.

Arthur Stevens

"Eat, drink, and be merry, for tomorrow we have a test."

Intramural, 1, 2; Football, 3, 4.



Florence Stowe

"And those that were good will be happy."

Dramatics, 4.

Gordon Swenor

"He looks at the world thru the colored glasses of love."

Football, 1, 2, 3; Basketball, 1, 2, 3; Golf, 2, 3; Student Council, 4; Dramatics, 4; Varsity Club, 4.



Cathryn Switzer

"She's not a flower, she's not a pearl, but she's a regular all around girl."

Graduated in 3 1-2 years; Glee Club, 1, 2, 3, 4; Chorus, 3, 4; Intramural, 1, 2, 3, 4; Track, 2; Baseball, 2, 3; Tennis, 4; G. A. A., 2; Student Council, 3; Hi-Light Staff, 4; Sub Deb Club, 4; Petosegan Staff, 4; Honor Society, 4; Girl Reserves, 4.

Cathryn Switzer

Thelma Tharp

"Ever loyal and ever true to the toil and task that she has to do."

Glee Club, 1; Intramural, 1, 2, 3; Track, 1, 2; Baseball, 1, 2; G. A. A., 1, 2, 3; Dramatics, 1, 2; Girl Reserves, 4.



Helen Tillotson

Helen Tillotson

"Her voice is low and seldom heard; we strain our ears to catch every word."

Glee Club, 1, 2, 3, 4; Orchestra, 2, 3, 4; Girls Sextet, 3; Intramural, 3; G. A. A., 3; Dramatics, 3.

Betty Tompkins

"Happy-go-lucky, fair and free, nothing there is that worries me."

Glee Club, 1, 2, 3, 4; Chorus, 3, 4; Intramural, 1, 2, 3, 4; Track, 1, 2; Tennis, 2, 3; G. A. A., 1, 2, 3, 4.



Pat Vandervest

"She's out for the thrill of a lifetime."

Band, 1, 2, 3, 4; Orchestra, 4; Clarinet Quartet, 3.

Remember gym class - Pat

Lois Veith

"Merrily she chews her gum—"

Glee Club, 1, 2, 3, 4; Chorus, 3, 4; Girls Sextet, 3, 4.



Betty Jean Waite

"In spite of all the learned say, I still my old opinion keep."

Glee Club, 1; Intramural, 1, 2, 3; Track, 1, 2; G. A. A., 1, 2, 3; Dramatics, 1, 2, 3; Intramural Debate, 1, 2, 3; Petosegan Staff, 4.

Remember for Club Lois Veith

Helen Walton

"Write me as one that loves her fellow men."

Glee Club, 2; Dramatics, 2.



Helen Wawrvzniak

"There's nothing so kingly as kindness and nothing so royal as truth."

Glee Club, 2; Intramural, 2, 3; Dramatics, 2.

Catherine Wells

"I have no mockings or arguments; I witness and wait."

Glee Club, 2, 3, 4; Chorus, 3, 4; Intramural, 1, 2, 3; Girl Reserves, 4.



Marie Wilber

"A jolly girl who's always gay and likes to play the livelong day."

Glee Club, 3, 4; Chorus, 3, 4; Girls Sextet, 3, 4; Intramural, 3, 4; Dramatics, 4; Hi-Light Staff, 4; Operetta, "The Captain of the Guard", 4; Girl Reserves, 4.

Lois Winsor

"Full of fun, you bet, as fine a friend as you can get."

Graduated in 3 1-2 years; Orchestra, 1; Intramural, 1, 2, 3, 4; Track, 3; Tennis, 3, 4; Baseball, 3, 4; Golf, 4; G. A. A., 3, 4; Dramatics, 3, 4; Hi-Light Staff, 4 (Circulator); Petosegan Staff, 4; Sub Deb Club, 4.



Evelyn Winter

"The mildest manners, and the gentlest heart."

Glee Club, 2; Intramural, 1.



Eleanor Wurst

"When in the course of human events it becomes necessary to bluff—let us bluff."

Class Vice-President, 4; Glee Club, 1, 2, 3, 4; Chorus, 3, 4; Girls Sextet, 4; Honor Society, 3, 4; Student Council, 2, 4; Dramatics, 2; '37 Jr. Play, "The Youngest", 3; '38 Jr. Play, "Big Hearted Herbert", 4; Operetta, "Captain of the Guard", 4; Petosegan Staff, 4; '38 Sr. Play, "Lady of Letters", 4.



CLASS HONORS

The honor of having the highest scholastic average in the class of 1938 goes to Tom Barton with an average of 3.929. Because he attended Levering High School during his freshman and sophomore years, Tom is ineligible for the valedictory honors. He has entered into many activities, among them are intramural debate, dramatics, and class activities.

The honor of valedictorian is given to Lottie Budek with an average of 3.893. She has majored in commercial subjects. Lottie has taken part in interscholastic debate, dramatics, and intramural basketball and volleyball; she has also been active as an officer of her class and a member of the Student Council and National Honor Society.

Jim Garvin receives the salutatory honors with an average of 3.813. Jim has taken a straight academic course; he has also taken four years of band. He has been active as President of his class and of the National Honor Society, he has taken part in intramural debate, and he has been a member of the high school orchestra.

Other students with "B" averages are Johanna Boyer, Cathryn Switzer, Ruth Owen, Theo Guillaume, Marguerite Kerwin, Maxine Phillips, Robert Reber, Wilber Reber, Jean Rigg, Dorothea Snyder, Bette Jeanne Waite, and Eleanore Wurst.

SENIOR CLASS HISTORY

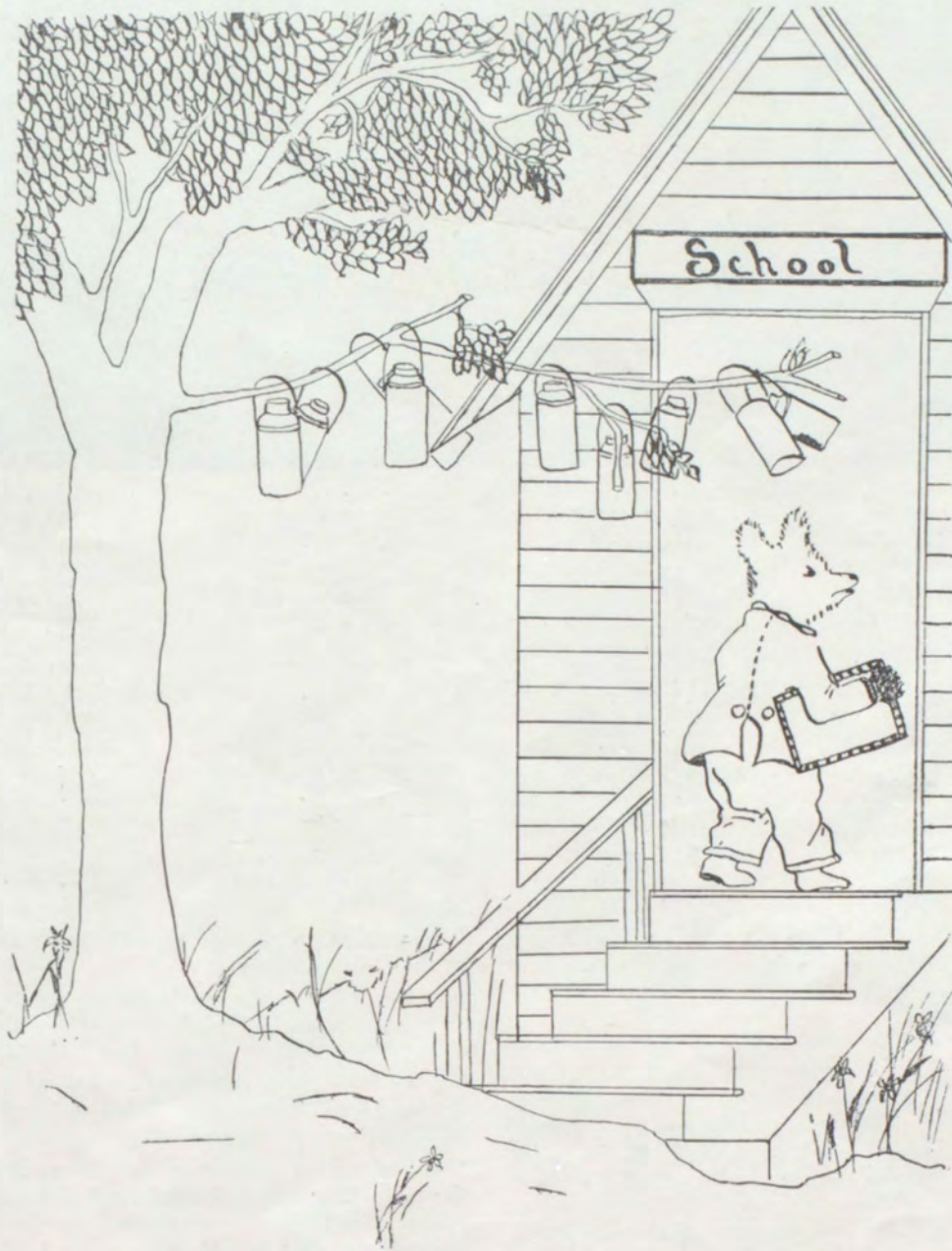
The Class of '38 started out on its expedition into the hitherto unexplored regions of the school year 1934-'35, where, as everyone knows, there are strange tests and rituals which students must pass before being allowed to move on. Only the brave can possibly get by these barriers. The leader during the first year of this four year expedition was Phyllis Schmitt, and her right hand man was a courageous explorer named Ira Smith. Jim Garvin took care of the financing of the undertaking. All tests were passed in record time, due to the fine work done by our leaders. But we were getting farther and farther into the depths of the jungle, and this was no time to rest on the laurels of our first year, so—

The second year of the expedition found Jean Rigg leading the daring explorers into the jungles of 1935-'36. Always at her elbow was

her ready, willing, and able assistant, Johanna Boyer; and again the financial situation was in the hands of Jim Garvin. This year was such a success along exploring lines that we lay down our packs at the edge of the jungle to have a celebration—in the form of a picnic at Youngs State Park.

We entered our third unconquered territory with the feeling that this was to be the most difficult and treacherous part of the journey so far. However, we courageously continued our trek. We were led past the milestones in 1936-'37 by Dick Brown and his capable assistants, Johanna Boyer, and Robert Reber as head of finance. During the year the class presented the play "The Youngest." The seniors were given a great send off at the annual J-Hop which

(Concluded on Page 40)



UNDERCLASSMEN

JUNIOR CLASS



Thomas Adams
Mildred Baird
Jack Barney
Marguerite Barrett
Henry Baumgartner
Jim Behan
George Bellairs
Ed Billideau
Gula Bogren
Pat Bowman
Dorothy Bremmeyr
Jack Brill
Mark Buckhardt
Shirley Burnett
Nancy Ann Calzaretta
Frances Campbell
Dick Case
Gladys Churchill
Melva Cook
Vance Cory
Helen Dombroski
Mary Jane Donaldson
Robert Donaldson
Cleo Dove
Herman Eddy

Mary Ernst
Marjorie Eppler
Jerry Fochtman
Paul Fraser
Ruth Fryman
Louise Glaser
Charles Hankins
Bob Harbaugh
Marian Hartung
Violet Haver
Wilbert Hegener
Jesse Herrick
Bill Hodgkiss
Rosemary Hoffman
Myrtle Holborn
Edith Hoover
Daisy Hull
Lillian Hurlburt
Amy Lou Johnson
Ed Kasubinski
Wilma Kage
Harlow J. Keating
Helen Keller
Kathryn Kelly
Helene Kemp

Dorothy Kocher
Harry Kurtz
Katherine Lambertson
Bob Lamser
Lillian Leismer
Bob Lites
Mathilda Manthei
Betty McClelland
Gerry McKinley
Bob McMaster
Martin Meyer
Bob Miles
Ralph Miller
Bertha Mindel
Cecille Moreau
Leah Morford
Jack Morris
Ralph Morrow
Lily Murray
John Neuman
Lee North
Walt Pater
Ed Paulus
Dorothy Paulus
Marjorie Paulus

Christine Phillips
Marion Potts
Clifford Riley
Veron Rohds
Trenton Shearer
Richard Shier
Jean Shurtz
Rachel Smith
Shirley Smith
Jim Soblesky
Ernest Sommer
Ruth Starmer
Roscoe Steen
Ruth Sterzik
Milford Stevens
Howard Stolt
Percy Upton
Doyle Vincent
Betty Wakeman
Ernest Ward
David Watt
Paul Wilcoxon
Jim Wilson
Betty Wolf
Ethelyn Zipp

The Class of '39 has been an active and alert organization throughout its three year course in Petoskey High, which began in September, 1935.

The class, having enlisted in the training camp of P. H. S., arrived and began their training courses at the beginning of the 1935-'36 school year. Having satisfactorily completed their first year's experience in June, 1936, the company left for the front where they arrived in September, of the same year. Organization was started with the following in high command: Roscoe Steen, commander-in-chief; Robert Donaldson, major general; and Harlow Keating, first lieutenant. High spots during the year were the annual picnic at Youngs State Park on May 28, the intramural debate team composed of Roscoe Steen, Helen Keller, and Jack Zaiger which lost to the Class of '40, and a party in the gymnasium.

The class credited much of its success during the year to Cathryn Switzer, Weldon Spears, Helen Keller, Thomas Adams, Roscoe Steen, and

Shirley McFarland, who were the representatives in the Student Council.

For satisfactory work during 1936-'37, the class was promoted to its present position. In September, 1937, it elected the following officers: Roscoe Steen, commander-in-chief; Shirley Smith, major general; and Lee North, first lieutenant.

During the past year the juniors presented the play "Big Hearted Herbert," and sponsored two parties in the gymnasium. In the spring, the intramural debate team composed of Nancy Ann Calzaretta, Geraldine McKinley, and Roscoe Steen defeated the Class of '38. During the year the juniors were represented in the Student Council by Shirley Smith, Thomas Adams, Roscoe Steen, Geraldine McKinley, Helen Keller, and Howard Stolt.

To close its major activities as the junior class, it sponsored the annual dinner-dance in honor of the seniors. Particularly outstanding at this event were the decorations in the gym.



SOPHOMORE CLASS

Adams, Louis
 Anys, Glenn
 Athern, Fern
 Bailey, Maynard
 Bare, Don
 Batcheller, Joan
 Bathke, Erma
 Behan, Pauline
 Brown, Jean
 Burek, Franl
 Butler, Irene
 Chapman, Roberta
 Chattaway, Janet
 Chew, Julia
 Cole, Lucilla
 Conroy, Bu-ll
 Cooper, Don
 Cooper, Bob
 Coveyou, Eleanore
 Craddock, Jim
 Crawford, Evelyn
 Czerkie, Josephine
 Czerkie, Stan
 Dickerson, Floyd
 Doherty, James
 Dombroski, Rose
 Dow, Walter
 Duly, Evelyn
 Duly, Helen
 Engler, Charles
 Ernst, Ralph
 Feather, Orval

Fettig, Eleanore
 Fochtman, Ray
 Fortune, Charles
 Fox, Audrey
 Fryczynski, Frances
 Garner, Betty
 Garringer, Jack
 Gibson, Bob
 Gokee, Roland
 Gosselin, Dick
 Gregg, Frances
 Grossman, Wayne
 Hagle, June
 Hand, Betty
 Hall, Clyde
 Hass, Alfred
 Hazelton, Paul
 Headley, Georgia
 Henika, Minnie
 Hoffer, Mary
 Hess, John
 Hoffer, Mary
 Hopper, Bill
 Hull, Aner
 Huzek, George
 Jodway, Clarence
 Jodway, Esther
 Johanssen, John
 Jordan, Myra
 Kage, Wilbert
 Kalbfleisch, Martin
 Keating, Edward

Kerwin, Josephine
 Kleinhaus, Dick
 Kolinski, Helen
 Krussell, Dick
 La Fleur, Helen
 Lapezynski, Sophie
 La Tocha, Ida
 Liberty, Marian
 Linnell, Albert
 Lombard, Agnes
 Long, Mildred
 Martincek, Grant
 Miles, Bill
 Morrow, Bruce
 Morrow, Ruth
 Mulligan, Kathleen
 Mulligan, Kerwin
 Murner, Heather
 Murray, Bonita
 Newton, Clifford
 Notestine, Paul
 O'Dell, Agnes
 Otto, Henrietta
 Pater, Helen
 Pesareyk, Nellie
 Pierce, Bert
 Pollak, John
 Potts, Bette
 Priebe, Marjorie
 Riese, Dorothy
 Ruggles, Jack
 Salisz, Stephany

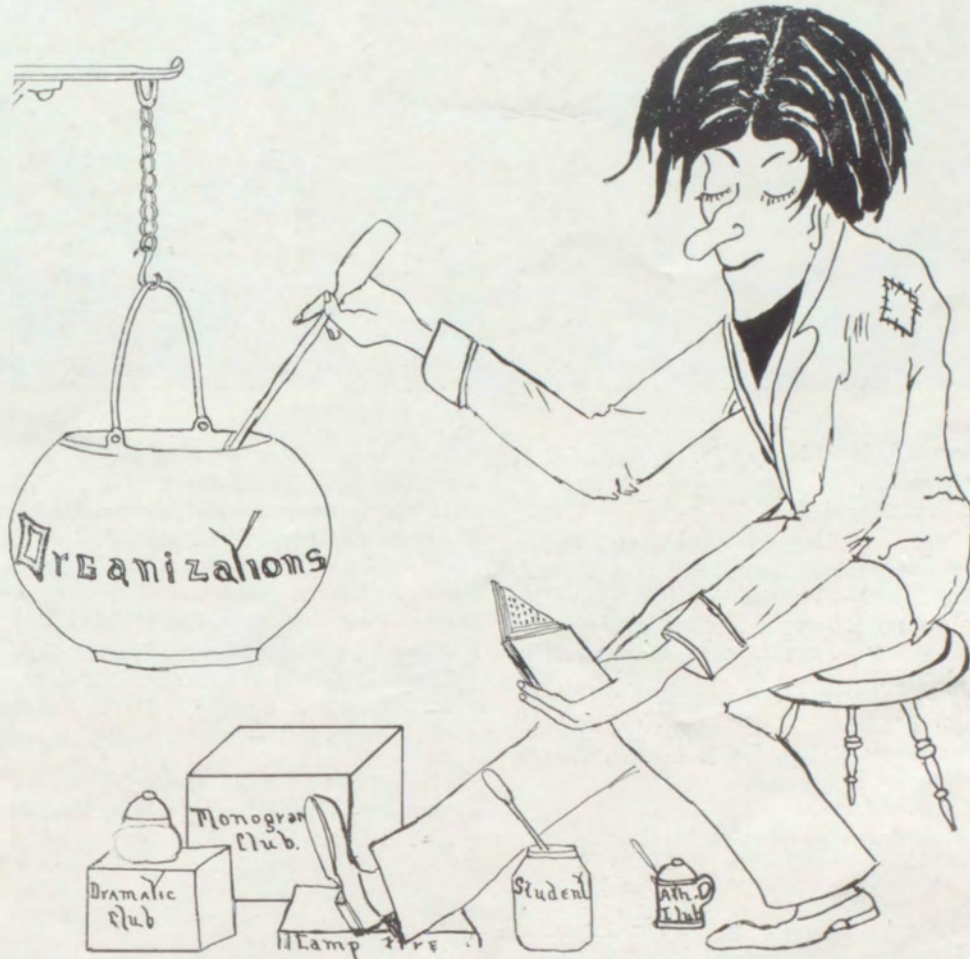
Sandel, Bonnie
 Saurman, Margaret
 Schantz, Lois
 Shearer, Norva
 Shinn, Madeline
 Schug, Marg
 Smith, Joyce
 Stanley, Edward
 Stanley, Esther
 Stanley, Lester
 Steffel, Gerald
 Stewart, Joan
 Stolt, Irene
 Stowe, Alice
 Swenor, Elsie
 Taylor, Dears
 Trimble, Billie
 Urman, Jeanette
 Vaughn, Edith
 Wakefield, Ralph
 Weinrich, Roger
 Wheaton, Roland
 White, Lynetta
 Wilhelm, Virginia
 Winnell, Charles
 Winter, George
 Wodek, Rose
 Zieba, Helen
 Zipp, Bill
 Zipp, Fred

The present sophomore class was organized in the fall of 1936 with the following people elected to class officerships: Robert Bursian, president; Maynard Bailey, vice-president; Joyce Smith, secretary-treasurer. During that year the class was proud of their debate team's achievement in their defeat of the experienced senior team.

Entering the high school for their second year, they chose Walter Dow as president, Helen LeFleur as vice-president, and Lynetta White as secretary-treasurer.

The sophomores have been well represented in many school activities this year. They have had class members in the varsity debate squad, football and basketball teams, in addition to the other extra-curricular activities about the school.

One of the high spots of the social season of PHS was reached when the sophomores gave their annual party in the gymnasium on January 8. This function was one of the best attended and most enjoyed of those given during the year.



ORGANIZATIONS

THE BAND



Flutes: Ralph Miller, Mary Hoffer, Carl Riley, Shirley Burnett.

Oboe: Barbara MacMillan.

Bb Clarinets: Jim Garvin, Fred Rose, Joyce Smith, Richard Robinson, Betty Lou Friend, Jim Townsend, Vernice Dalton, Rosalie Moens, George Bowman, Charles Johnson, Ralph Chapman, Jean Liberty, Ruth Sterzik, Russell Hinds.

Trombone: Robert Reber, Louis Adams, Wayne Reber, George Neiswander.

Baritone: Bill Adams.

Basses: Clifford Riley, Charles Hankins.

Alto Clarinet: Maxine Phillips.

Bass Clarinet: David Watt.

Alto Saxophones: Earl Leismer, Dick Niles.

Tenor Saxophones: Jay Packard, Ann Dalton.

Baritone Saxophone: Gage Loveless.

Bassoon: Ernest Sommer.

Horns: Ray Fochtman, Orlie Baird, John Hess.

Bb Cornets: Wilber Reber, Walter Dow, Albert Linnell, Harold Hendricks, Bill Krauser, Don Miller, Lillian Hurlburt, Orval Feather, Gerald Jacobs, Bill Zipp.

Glockenspiel: Joan Batcheller.

Percussion: Henry Baumgartner, Paul Wilcoxon, Alfred Frank, Jim Doherty.

The Petoskey High School Band is an organization of which we may all be proud. It is considered one of the largest and best bands in Northern Michigan, and during the past year has had an average enrollment of sixty members.

In the past two years, band members have been receiving credit on the laboratory or full credit basis. About eighty per cent of the members of the band are receiving credit under this system, which requires a certain amount of regular outside preparation.

With the sincere and untiring efforts of our instrumental director, Mr. S. M. Trickey, the band has grown remarkably in size and instrumentation during the past four years.

At the football games last fall, the band was present to play and execute difficult maneuvers upon the field. At the opening of the

basketball season, the band journeyed to Gaylord and there shared honors with the basketball team in their appearance in the gymnasium. The intricate clock formation which was presented between the halves received high praise from the spectators. Throughout the basketball season the band made its regular appearances at the games, executing a different set of formations each time.

The band rehearsals during the spring season were spent in preparation of the music which was played at the Northern Michigan Band and Orchestra Festival, held this year in Charlevoix on May 7.

To complete one of the most brilliant years that a Petoskey High School band has ever had, the band provided musical numbers for the annual Class Day and Commencement exercises.

THE ORCHESTRA



First Violins: Betty Lou Friend, Barbara Mac-Millan, Helen Tillotson, Maxine Phillips, Mary Lou Larsen.

Second Violins: David Watt, Alfred Frank, Christine Phillips, John Hess, Orlie Baird, Betty Tuttle.

Cello: Louise Cripe.

String Bass: Charles Hankins.

Flute: Ralph Miller.

Bb Clarinets: Jim Garvin, Fred Rose.

Oboe: Earl Leismer.

Alto Clarinet: Joyce Smith.

Tenor Saxophone: Jay Packard.

Bassoon: Ernest Sommer.

Bb Cornets: Wilber Reber, Walter Dow.

Horn: Ray Fochtman.

Trombone: Robert Reber.

Percussion: Henry Baumgartner, Paul Wilcoxon.

Piano: Ruth Owen.

The Petoskey High School Orchestra was organized nearly four years ago as a string ensemble and as such made several public appearances. The first addition to the ensemble was that of clarinets, and then gradually more and more different instruments were added until at present there are approximately thirty members.

Over ninety percent of the orchestra members are working on a full credit basis; that is, they spend extra time outside of school in preparation for instrumental lessons. The others receive laboratory credit for participation without outside preparation.

At the beginning of this school year the orchestra found itself in the fortunate position of having retained nearly all of its old members as well as having added new ones. This record was made better through no loss of members at the close of the first semester.

Activities of the group this year included playing at the class plays of the junior and senior classes as well as a special project by many of the members, furnishing the accompaniment for the operetta "Captain of the Guard" which was given by the music department. Those members taking part thoroughly enjoyed the experience as well as gained proficiency on their respective instruments through the additional opportunities for practice. They also shared in the privileges and honors of the performers.

Plans for the spring activity include playing for certain class exhibits and for the baccalaureate service in June.

Mr. Trickey, the instrumental director, has been the able and efficient director of the orchestra, and under him the members have gained proficiency both as individuals and as a musical group.

BOYS GLEE CLUB



Top row, left to right: Jim Garvin, Albert Linnell, Robert Reber, Marten Meyer, Mark Buckhardt, Harold Hendricks, Jay Packard, Clarence Jodway, Don Sehr, George Neiswander, Wilber Reber, Walter Dow.

Bottom row: Gerald Jacobs, Gage Loveless, Lee North, Vernon Cook, Henry Baumgartner, Wayne Reber, Clifford Riley, Bill Adams, Orval Feather, Roscoe Steen, Jim Townsend.

The season of 1937-38 has seen an increase in the membership of the Boys Glee Club, adding much to the interest in this organization and quality of its presentations. The enthusiasm has been so great that two noon hours a week have been used for its rehearsals, thus making it possible for members of the High School Orchestra to also join the Glee Club.

The Boys Glee Club has given several performances during the year and has caused favorable comment on its ability to render musical selections.

The Girls and Boys Glee Clubs combine to form the High School Chorus, of which the following are the officers: President, Clifford Riley; Vice-President, Phyllis Schmitt; Secretary and Treasurer, Eleanore Wurst.

THE OPERETTA



"THE CAPTAIN OF THE GUARD"

"The Captain of the Guard", by Williams and Steckel, was presented March 4, 1938 under the auspices of the musical organizations of Petoskey High School with the chorus and soloists under the direction of Miss Dora Silver, and the orchestra following the baton of Mr. S. M. Trickey. The members of the faculty who assisted with the presentation were Mrs. Stech, dramatics; Miss Frances Pailthorp and the art department, and Mr. T. A. Treloar and the manual training classes, stage setting; Miss Helen Ryerse and the clothing department, costumes; Miss Nina Lawrence and Mr. W. J. MacMillan, dances and drills; Miss Constance Metzger, business manager; and Miss Alice Farnsley, prompter.

THE CAST

Princess Flavia	Pat Bowman
Andre	Clifford Riley
King Nicholas	Bill Adams
Queen	Eleanore Wurst
Chancellor	Wayne Reber
Herald	Maynard Bailey
Duchess of Lowengratz	Phyllis Schmitt
Alexis	Lee North
Sonya	Nancy Ann Calzaretta
Countess Helga	Corinne King
Countess Olga	Marie Wilber
Trumpeter	Albert Linnell
Prince of Oxenstein	Bob Miles
Baron Von Ledowitz	Roscoe Steen
Inn Keeper	Clarence Jodway

GIRLS GLEE CLUB



Top row, left to right: Bette Wakeman, Betty Dow, Betty Tompkins, Irene Foltz, Virginia VanLeuven, Catherine Wells, Ruth Owen, Cathryn Switzer, Kathryn Lancaster, Phyllis Schmitt, Bertha Mindel, Theo Guillaume, Louise Brill, Eleanore Wurst, Helen Tillotson, Jerry Fochtman, Lucille Zink, June Hagel, Helen Kemp.

Bottom row: Mary Feily, Verna Sommer, Jean Brown, Lillian Rose, Veron Rohde, Grace Anderson, Dorothea Snyder, Helen Keller, Pat Bowman, Virginia Meyer, Johanna Boyer, Pearl White, Bobbie Chapman, Louise Johnson, Corinne King, Lois Veith, Nancy Ann Calzaretta, Alice Shinn, Patricia Sik, Helen Billieau, Marie Wilber, Dora Silver, director.

Although the Girls Glee Club has spent most of its time this year working on the operetta, it has still found time to prepare a repertoire for the Annual Music Festival as well as for the June graduation exercises. It has very successfully entertained in its appearances before the school and public. Much commendation is due Miss Dora Silver, who as musical supervisor of the Vocal Department has achieved much toward advancing and maintaining interest in music in Petoskey High School. After the loss of Miss Silver in April, Mrs. S. M. Trickey very ably continued her excellent work.

In accordance with the school colors of blue and white, the girls in 1936 designed and made their own robes in which they have made all their appearances.

The club will suffer a loss of many seniors whose footsteps it is hoped that members of the Junior Girls Glee Club will readily follow.

GIRLS SEXTET



From left to right: Ruth Owen, accompanist, Phyllis Schmitt and Eleanore Wurst, alto; Joyce Smith and Lois Veith, second soprano; Marie Wilber and Pat Bowman, first soprano.

The Girls' Sextet was organized in the fall of 1936. Because of the convenience of such a small group, it has been very active in appearing before the public during the past two years. The girls have derived a great deal of pleasure from this organization as well as having contributed to local entertainment.

Five of the original members are still with

the sextet. The sixth, Virginia Buettner, graduated in 1937, leaving a vacancy for one new member.

The group has appeared before the Rotary Club, the Kiwanis Club, the various P. T. A.'s, the Teachers' Convention, the P. T. A. Convention, the 1937 graduation exercises, the 1937 Spring Concert, and several assembly programs.

NATIONAL HONOR SOCIETY

The Petosega Chapter of the National Honor Society, which was organized in 1925, has completed its fourteenth year in a very successful manner, under the capable leadership of Miss Beebe, faculty adviser. For admission into the society, the candidate must rank high in the qualities of scholarship, leadership, character and service.

Candidates are chosen from the twenty-five per cent of the class members who have the highest scholarship rating. These candidates, of course, must excel in the three other qualities, leadership, character, and service. Fifteen per cent of the class enrollment is eligible for membership in the Society—five per cent of which are elected during the second semester of the

junior year and ten per cent during the second semester of the senior year.

The senior members who were elected last year are Lottie Budek, James Garvin, Ruth Owen, and Eleanore Wurst. The members elected in March of this year are Tom Barton, Johanna Boyer, Theo Guillaume, Walter Masters, Geraldine McKinley, and Cathryn Switzer. At the conclusion of the 1936-'37 school year James Garvin was elected president of the Society and Lottie Budek, secretary.

As a climax to the year's activities of the chapter, the annual banquet was held on May 27 at the Petoskey-Bay View Country Club. At this meeting, to which alumni and friends of the Society were invited, the new junior members were initiated.

GIRL SCOUTS



Top row, left to right: Evelyn Longcore, Betty Mashinsky, Betty Dow, Audrey McPherson, Lois Leach, Betty Tuttle, Mary Lou Larson, Shirley Craig, Maria; Mollhagen, Georgie Murray, Alice Platt, Leona LaMore.

Bottom row: Pearl White, Catherine George, Anna Mae Lanterman, Patricia Stafford, Janice Keller, Vera Jean Grossman, Louise Cripe, Iris Stansberry, Evelyn Campbell, Pat Doherty, Evelyn Bassett.

In the fall of 1936 the North Star Troop of Girl Scouts, consisting of junior high girls, was organized. The organization is now affiliated with the National Girl Scout Headquarters in New York City.

Officers during the past year were Miss Mildred Jensen, captain; Miss Ruth Crothers, Miss Nina Lawrence, Miss Virginia Wyatt, lieutenants; Alice Platt, scribe; and Vera Jean Grossman, treasurer.

PYTHAGOREANS

Top row, left to right: Hilda Gokee, Iris Reber, Vercel Turk, La Vern Dostator, Gerald Jacobs, George Bowman, James Wenz.

Middle row: Nancy Batcheler, Marie Bathke, Mary Lou Larson, Audrey McPherson, Frances Hammil, Alice Mallory, Paulina Ross.

Bottom row: Jean Hammon-tree, Patsy Donnelly, Angela Powers, Jean Liberty, Edith Bathke, Sylvia Dostator, Monesa Phillips.



The Pythagoreans, a group of junior high school students who are particularly interested in mathematics, was organized in September of last year. The purpose of the club is to develop a strong interest and appreciation for mathematics through a study of its development from early times, and through the study of interesting phases of the subject which cannot be included in the regular curriculum.

The following officers were elected for the first semester: James Townsend, president; Frances Hammil, secretary; Jean Liberty, program chairman. During the second semester the following officers served: Jean Liberty, president; Edith Bathke, secretary and Angela Powers, program chairman.

The group has been under the faculty leadership of Miss Schreur throughout the year.

GIRL RESERVES



Top row, left to right: Bette Potts, Joan Batcheller, Louise Johnson, Frances Campbell, Ruth Starmer, Marian Potts, June Dombroski, Joyce Smith, Nancy Ann Calzaretta.

Middle row: Adviser Helen Ryrese, Helen Kemp, Lillian Leismer, Audrey Fox, Mary Hoffer, Phyllis Schmitt, Cathryn Switzer, Catherine Wells, Jerry Fochtman, Pauline Behan, Adviser Wilma Wagenvoord.

Bottom row: Billie Trimble, Edith Vaughn, Thelma Tharp, Ruth Olsen, Marie Wilber, Virginia Meyer, Corinne King.

The Girl Reserves, organized as a member body of a national institution which is represented in every large high school, was established in PHS at the beginning of the second semester of this year. The purpose of the organization is to bring girls closer together in the life of the school. Qualifications of character, personality, leadership and other virtues enable high school girls to become members.

The following girls have served as officers during the past semester: president, Ruth Olsen; vice-president, Corinne King; secretary, Thelma Tharp; treasurer, Virginia Meyer.

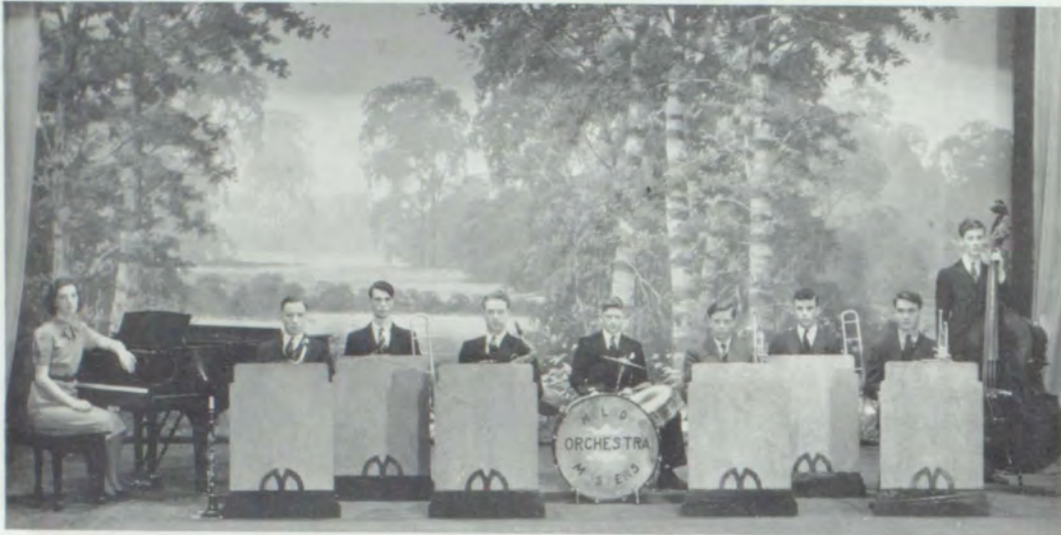
The body is served by the following activity groups with their various chairmen: Program, Edith Vaughn; Social, Bette Potts; Ways and Means, Marie Wilber; Publicity and Historic, Billie Trimble.

The advisory council is composed of two groups — ten Student Council girls, and the Senior Women's Council.

The Student Council girls are Ruth Olsen, Corinne King, Thelma Tharp, Virginia Meyer, Marie Wilber, Edith Vaughn, Lillian Leismer, Bette Potts, Audrey Fox, and Billie Trimble. The Senior Women's Council consists of Miss Esther Christopher, (chairman), Mrs. Arthur Hinkley, Mrs. W. W. Heintz, Mrs. H. O. Carlzen, Mrs. Walter Schlechte, and Mrs. Richard Wykes.

Miss Wagenvoord and Miss Ryrese took upon themselves the difficult task of establishing the organization, and are due much credit for the work that they have done.

Melodemasters Orchestra



Left to right: Ruth Owen, Jim Garvin, Wayne Reber, Jay Packard, Paul Wilcoxon.
Wilber Reber, Robert Reber, Walter Dow, Clifford Riley.

The Melodemasters, under its present organization, was firmly established as a high school institution last fall, when a group of students took upon themselves the task of providing music for the school dancing parties.

While it is not a school organization in the sense that it has a faculty advisor, it has been fortunate in being able to seek and secure the

advice and help of any member of the faculty. It is operated cooperatively by the members.

The faculty and student body agree wholeheartedly that the group that has played for school parties throughout the year only for the enjoyment which they receive from it has contributed invaluablely in the promotion of the social life of PHS.

SUB DEB CLUB

Last fall the need was felt in the high school for an organization which would provide social activities for the girls and an opportunity for them to study the personality and manners of the "ideal girl." The Sub Deb Club, which is a national organization sponsored by the Ladies' Home Journal, was the type of organization chosen.

Eighteen senior high school members organized the club in Petoskey High, and selected Miss Bergeman as faculty sponsor. Officers

elected were Janet Chattaway, president; Frances Campbell, vice-president; Louise Brill, corresponding secretary; Jean Rigg, recording secretary; and Mary Feily, treasurer.

At the initial meeting cream and rust were selected as the club's colors. Meetings are held semi-monthly, alternating between business and social functions. The special projects of the club include teas and parties to which other girls of the high school student body are invited.

HI-LIGHT



Top row, left to right: Alice Shinn, Helen Tillotson, Gayle Hartung, Helen Keller, Jean Rigg, Theo Guillaume, Marie Wilber, Ruth Fryman.

Middle row: Nancy Ann Calzaretta, Peter Lites, Phil Rehkopf, Wilber Reber, Henry Baumgartner, Kenneth Mollhagen, Faculty Advisor John F. McDonald.

Bottom row: Virginia Meyer, Ruth Owen, Gerry McKinley, Jim Garvin, Pat Bowman, Lois Winsor, Cathryn Switzer.

Last fall, the students of the sociology class, always broadly interpreting their duties to the school, felt the need for the revival of the school paper enough to work for the establishment of such a publication. The High News, the student publication of past years was discontinued along with many other extra-curricular activities at the beginning of the depression. Since that time many people have commented on the fact that a school the size of Petoskey High should have a school newspaper.

As there had been no journalism class for many years, the sociology students, under the direction of Mr. McDonald, took it upon themselves to publish a paper. They realized at the time that it was a bit out of their field, but that some good might come of it if they were to "get the ball rolling." It was decided by the editorial staff, elected from the class members, that the paper would be a self-supporting institution and would appear twice a month. With a great effort on the part of all concerned, the first issue, called THE HI-LIGHT, appeared in December. It contained no advertising.

At the close of the first semester, the trials of newspaper publishing were turned over to the

economics class, which takes the place of sociology during the second semester.

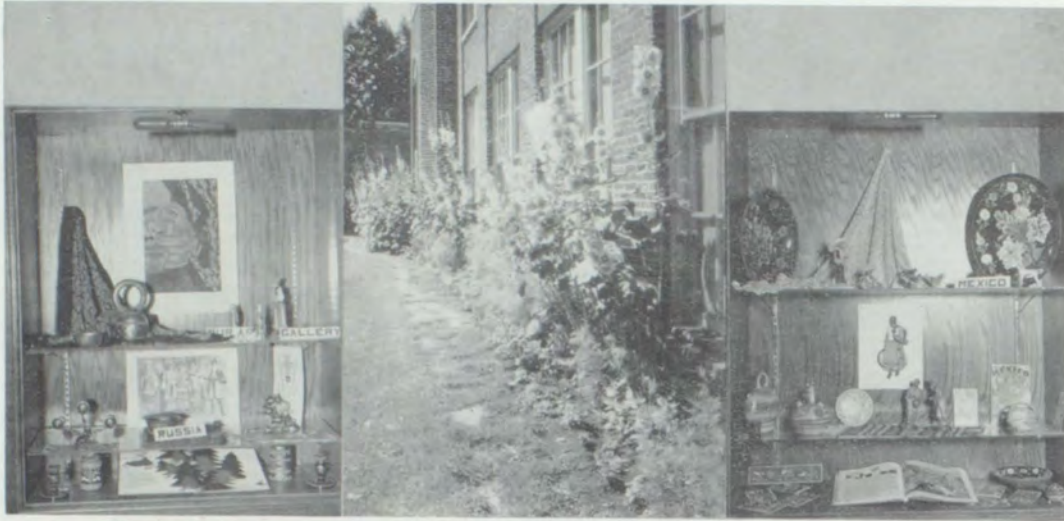
The editorial staff, ever confronted with criticisms from all sides, continued its work with the aid of a few loyal members of the student body, and the high point of the year was reached on March 11, when an elaborate sixteen page issue was published. The complete edition of six hundred copies was immediately sold. This issue, along with previous and subsequent ones was made possible largely through the help of the Hi-Light advertisers.

Since then, however, the paper has appeared regularly, as before, with comments both favorable and otherwise.

The staff feels that it has accomplished something worthwhile for Petoskey High, and that the project they have started is a growing thing. Certainly much praise is due to Mr. McDonald, his class, and the members of the staff who conceived and organized the project.

Since it is impossible to include all the names of those who have been concerned with the publication of the Hi-Light, it is hoped that anyone who has taken an active part will accept heart-felt thanks from the editorial staff.

ART DEPARTMENT



The art department of the Petoskey Public Schools is regarded as one of the most active departments in the school. Although the number of students who participate in these activities is smaller in proportion to the total number of students, the quality of the work is exceptionally fine and of high caliber. Among the many civic problems with which our art classes come in contact are the following: designing thrones for our winter queens; writing and illustrating the history of Petoskey; making posters to advertise our unusual shops; making stage settings for plays and operettas; bringing art and garden films to the school; and selecting books and magazines for the art library. Besides these activities, the grounds around our school buildings have been measured, drawn to scale, and landscaped by the high school art classes. Shrubs, trees, vines, and flowers have been given by the P. T. A., the Senior Garden Club, High School classes and other friends; while

bulbs, annuals, and perennials have been planted by the Junior Garden Club.

In cases in the Central building, sections of our art gallery have been arranged. Students and friends who have traveled have filled these with mosaics, corals, Venetian beads, laces, murals, from Pompeii, Italy; wax and tin figures, decorated gourds, serapes, shawls of white lace and silver, feather pictures, and pottery from Mexico; and cloth panels, leather cases, and jewelry from Africa. The Russian case is perhaps the gayest with a colorful wool shawl, brass bowls, candlesticks, and embroidered pieces. The Chinese section is the daintiest with its silk kimona which at one time belonged to a Chinese bride.

The special pride of the art department is the group of baskets made of sweet grass, birch bark, quill, and splints by our native Northern Michigan Indians.

PEP CLUB



Top row, left to right: Ernest Sommer, Bob Donaldson, Walter Dow, Henry Baumgartner, Jim Wilson, Bill Miles.

Bottom row: Faculty Adviser Constance Metzger, Bette Potts, Phyllis Schmitt, Jess Herrick, Jean Rigg, Frances Campbell, Shirley Smith.

In 1927 a group of students with the principal as their adviser started an organization in the high school and called it the Pep Club. The organization was to have certain duties to perform for its school and for the student body in general.

The members of the club are chosen from the sophomore, junior, and senior classes. As there is a limited membership of twelve, the number of new members is determined by the number of seniors who have been graduated the previous year. Prospective members are voted upon by those in the club. The candidate must be a willing worker, active in school activities, and a good booster.

The Pep Club this year as in the last 12 years has had much to do with the promotion of school spirit. It has had charge of all the pep meetings; it has trained the new cheer leaders and worked out new yells for the football and basketball games. The members of the club are proud that their organization is behind all the worthy projects of the school and constantly endeavors to help each and every school organization.

Officers who have served the past year are Jess Herrick, president; Shirley Smith, vice-president; and Frances Campbell, secretary-treasurer. Miss Metzger has served as faculty adviser since she came here in 1930.

INTERSCHOLASTIC DEBATE



Ruth Bergeman, coach; Fred Rose, Bill Zipp,
Albert Linnell.

Much praise from the students of PHS is due their debate team for the excellent work it has done during the past year. The school relied upon two sophomores and one freshman to do its interscholastic debating.

The question this year was Resolved: that the several states shall adopt the unicameral form of legislature. The first and second debates, with Alpena and Mesick, respectively were won by Petoskey. The team then lost hard fought contests with Rogers City and Onaway, but showed definite and remarkable improvement over its first appearance. As the debaters came within two points of entering the elimination series, great things are expected of them next year.

Utmost appreciation for her valuable work as coach is given to Miss Ruth Bergeman by the students of Petoskey High School.

DRAMATICS CLUB

The Dramatics Club is an extra-curricular organization whose members are those students especially interested in play production. Credit toward graduation is given to the pupil who is not absent more than three times, pays his dues, and takes an active part in the club activities.

All phases of play production are studied during the year, the first semester being devoted to acting, and the second to learning about stage scenery and its making, lighting effects, costuming, and make-up. In addition, voice control exercises are practiced, stage directions are learned, dialects are studied, and a variety of one-act plays is used to illustrate the types of drama.

One of the main purposes of the club is to present interested but inexperienced actors to test their ability. The successful ones are given opportunities to appear in class plays. As a part of the test, one-act plays are given as assembly programs.

The first play to be given was "The Trying Place" with Louise Brill, Corinne King, Virginia Meyer, Tom Barton, Henry Baumgartner and George Bellairs taking part.

Another play, "Chinese Love", was also given before the student body. The members taking part were Lois Leach, Betty Lou Friend, Vernice Dalton, Virginia VanLeuven, Patricia Sik, Shirley Craig and Alice Friend.

During the past year the club entered the social life of the school to a greater extent when it sponsored one of the bi-weekly dances.

Of the thirty members now enrolled, several have had leading roles in the operetta and class plays. The club is proud to have been the means of discovering such talent.

Petoskey residents who have been connected with the theater in Chicago, Grand Rapids, and Detroit have given interesting talks to the group on various types of stage work in which they have participated.

The faculty sponsors are Mrs. Stech and Miss Farnsley, who deserve much credit for the time they spend outside of school hours to help those interested in dramatics.

The officers for the year were as follows: president, Corinne King; secretary, Louise Brill; treasurer, Bob Miles.

HI-Y CLUB



Top row, left to right: Orville Feather, Jim Garvin, Walter Dow, Marten Meyer, Wilber Reber, Paul Wilcoxon, Bob Donaldson.

Middle row: Lee North, Jim Wilson, Ralph Ernst, Henry Baumgartner, Tom Adams, Albert Linnell, Bob Bursian.

Bottom row: Faculty adviser Walter J. MacMillan, Bill Zipp, Ralph Miller, Paul Hazelton, Robert Reber, Walter Masters.



officers and members of the club.

The aim of the Hi-Y, a high school affiliate of the Y. M. C. A., is to create Christian fellowship among its members, and to carry out a three fold program—the development of body, mind and spirit, not only among its members, but in the school and community.

Throughout the year, on the second and fourth Mondays of each month, interesting discussions are held, conducted by prominent men of the city. The meetings are of an informal nature as far as possible, and are usually opened with a cooperative supper in the high school cafeteria. Two social meetings are held during the year, one during Christmas vacation for the entertainment of alumni members, and one

at the close of the year as a farewell to the senior members.

For several years the local Hi-Y club has sent a delegation to the Older Boys' Conferences which are held in one of the larger cities. Last November, at Thanksgiving vacation time, Ralph Miller, Jim Garvin, Wilber Reber, Albert Linnell, and Mr. Bond made such a trip to Battle Creek, and returned with valuable information which was made available to the club at subsequent meetings.

Shortly before the beginning of school in the fall, the club sends several of its members to Camp Hayo-Went-Ha, the summer Y. M. C. A. Camp on Torch Lake.

The officers of the Hi-Y for the past year have been Bob Donaldson, president; Ralph Miller, vice president; and Jim Garvin, secretary-treasurer. Mr. Walter J. MacMillan, who has been a friend of all who have ever known him, served in his regular capacity as faculty adviser.

SENIOR CLASS PLAYS

JUNIOR PLAY 1937

During their junior year, the Class of '38 presented a successful comedy entitled "The Youngest." The cast consisted of the following:

Jean Rigg	Charlotte Winslow
Jay Packard	Oliver Winslow
Bob Miles	Mark Winslow
Eleanore Wurst	Augusta Winslow Martin
Wilber Reber	Allan Martin
Alice Dunn	Muff Winslow
Don Angus	Richard Winslow
Gayle Hartung	Nancy Blake
Nancy Mania	Kate, the maid

The plot centered around Richard Winslow, who was "The Youngest", to overcome the domination of his family, and receive that which rightfully belonged to him. A climax was reached when Richard got the advantage over the others by a twist in the law concerning wills. Then he showed his true character and became a "human being". The romantic theme was supplied by Nancy Blake who helped him to gain his superior place in the sun.

SENIOR PLAY 1938

For our final attempt at dramatization, the class presented the play "Lady of Letters." The cast consisted of:

Gayle Hartung	Adelaide Willifer
Tom Barton	Professor Willifer
Phyllis Schmitt	Julia Pace
Jean Rigg	Stella MacDonald
Jay Packard	Warren Ainsley
Alice Dunn	Winifred Shaw
Virginia Meyer	Cornelia Lawrence
Eleanore Wurst	Susie Willifer
Walter Pruss	Dr. Newberry
Robert Reber	Richard Mays
Maxine Phillips	Henrietta
Wilber Reber	Mr. Creepmore

The "Lady of Letters" is a story of the attempt of Adelaide Willifer, the naive wife of Prof. Willifer, to gain recognition. She buys a book and publishes it under her own name. With its publication comes fame and then exposure. The college authorities turn against her, but her family rallies to her support. The real author refuses to publicly expose her, and she and her husband are happily reconciled.



ATHLETICS

FOOT BALL



Top row, left to right: Coach Steve Sebo, student manager Dick Brown, Edward Stanley, Jim Sobleskey, Bob Bursian, Bob Cooper, Fred Zipp, Dick Cascaddan, Bob McMaster, Harry Kurtz, ass't coach Lynn Bartlett.

Middle row: Clarence Jodway, Dick Krussel, Karl Kage, Trenton Shearer, Ed Paulus, Paul Fraser, Ralph Miller, Will Hegener, Bill Adams.

Bottom row: Phil Rehkopf, Lee North, Alfred Leismer, Ed Billideau, Al Murner, Bob Donaldson, Art Stevens, Jess Herrick.

Petoskey's 1937-'38 football season began on September 25 when the local team played Gaylord on our home field. As we had started the schedule with an inexperienced team, we lost the first game 7-0.

The second game was played one week later, on October 2, against the veteran Boyne City team. Petoskey lost this contest, on its home field, by a score of 33-0.

We played the third game on October 9, at Manistee. Great improvement was shown in the ability of Petoskey's eleven, and it appeared at various times that PHS would be successful in gaining a victory, but Manistee made a final drive which left the final score 7-0 in their favor.

The fourth contest took Petoskey's boys to Alpena on October 16, where the going was hard against a large, heavy, and experienced team. Petoskey played valiantly but could not stop Alpena from building up 47 points while we were held scoreless.

We returned to the home field on October 23, when we played Cheboygan. The team was successful in making a touchdown and scoring

the extra point, while holding Cheboygan to 20 points.

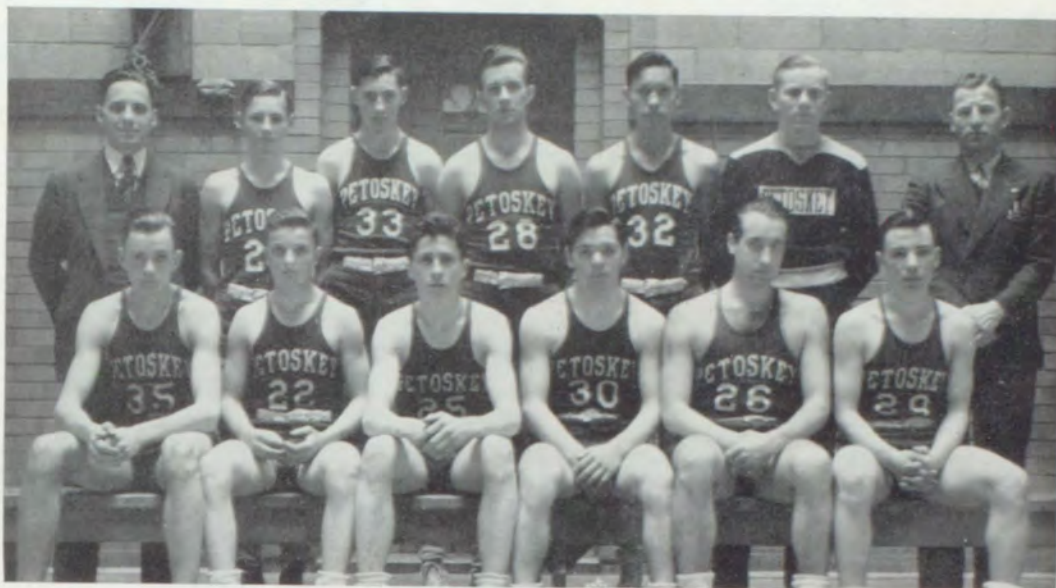
The last home game of the season was played on October 30 against Cadillac when we were defeated by a score of 39-7.

The final contest was a night game on November 4 at Traverse City. The efficient Traverse City machine gained 51 points while Petoskey made a touchdown which brought them six points.

Traverse City was the scene of the annual Big Seven Conference Football banquet on November 18. Those attending from Petoskey High were T. A. Treloar, F. S. Jacobs, Steve Sebo, R. I. Roberts, Al Murner, Art Stevens, Phil Rehkopf, Clarence Jodway, Alfred Leismer, and student manager Dick Brown.

In expressing our appreciation of the work of Coach Sebo, we need only to say, that he has done remarkably well in developing good material for Petoskey's future athletic teams. It is largely through his cooperation and friendship with the boys that they are induced to take part in the different types of athletics which are being developed in the school. The class of '38 wishes him well when he starts his second year with Petoskey next fall.

BASKET BALL



Top row, left to right: Athletic manager T. A. Treloar, Bob Bursian, Bob Harbaugh, Dick Gosselin, Tom Adams, student manager Dick Brown, coach Steve Sebo.

Bottom row: Jess Herrick, Doyle Vincent, Ed Billideau, Paul Fraser, Art Chat-taway, Jim Behan.

Petoskey High School opened its basketball season on Dec. 3 at Gaylord. They won their opening game by the close margin of 25-23.

For the second game the team went to Charlevoix to contest with the skillful five of that school. Here they were defeated by a score of 27-20. At this game the students of PHS were exceptionally well represented.

During the Christmas vacation period, on Dec. 21, the schedule took Petoskey's five to Alpena where Alpena was successful in building up 30 points to Petoskey's 21.

The first game of the year was played against Charlevoix on Jan. 1. Petoskey again met defeat at the hands of the undefeated Charlevoix team, losing by a score of 42-11.

The second home game of the season was played against Petoskey's arch rival, Harbor Springs, on the home court. In a fast and thrilling game, Petoskey was successful in finishing one point ahead of Harbor, 26-25.

On January 21 the PHS boys traveled to Cheboygan and here met defeat in the last three minutes of play. The final score was 17-14.

On February 3 Petoskey again met Harbor Springs, this time on the latter's home floor. In a hotly contested game, Harbor pulled the victory from Petoskey at the last moment making the final score 27-26.

Petoskey met Traverse City, there, on the tenth of February. PHS was successful in counting up 18 points while Traverse City finished with 32.

On February 22 Boyne City came here and in a well fought contest defeated us by a score of 23-11.

The same week, on February 25, we met Alpena and defeated them 21-15.

The last game of the season was played against Cheboygan and found Petoskey successful in winning from their opponents by a score of 35-24.

While Petoskey's basketball team has not been as successful as it might have been, much improvement was shown, and prospects for the season 1938-'39 are immeasurably brighter under the leadership and direction of Coach Sebo.

OTHER ATHLETICS

BASEBALL

Petoskey High School is fortunate in being one of the comparatively small number of high schools in Michigan which have baseball on their list of athletics. Baseball at PHS is a major sport and those on the varsity team receive the same recognition as football and basketball players. During the past year the prowess of our nine has not been felt among the teams scheduled. A rather strong schedule coupled with a lack of veterans in the past has made championship teams rare, but so far this season the boys have shown improvement and indications are that success is once more in sight. Coach Sebo, who is in charge of baseball, is building from the ground up, and the firm foundations will underly the championships.

GOLF

Mr. MacMillan, who coaches the golf team, has done much in the past several years in bringing into notice this fine sport. Golf does not seem so prominent as some of the other sports in the spring, because comparatively few people are affected by the golf team. Petoskey's representatives in the field this year are Bill Miles, Frank Burek, Don Sehr, and Jack Barney. Throughout the spring season they have been busily engaged in perfecting their team for matches with other schools in this part of the country.

TENNIS

Tennis is another sport which in recent years has come to play a major part in the lives of many boys in PHS. Mr. MacMillan is in charge of the tennis team which has worked strenuously throughout the spring. Petoskey's outstanding players in this sport are Jim Barton, George Bellaires, Harold Hendricks, Jack Lucas, Clifford Newton, Jay Packard, Clifford

Riley, Fred Rose, Jack Ruggles, Roscoe Steen, and Ernest Ward. The high spot of the tennis year is the regional tournament at Cadillac, which is held in the middle of May. This year, as in the past, Petoskey High was well represented at this meet.

TRACK

Petoskey's track teams, under the direction of their Coach Lynn Bartlett, are of perhaps greater interest to the general student body because of the large number of boys which they affect.

This year there were four meets in which Petoskey was represented. On May 2 the annual interclass meet was held. The Sophomores piled up 44 1-3 points to take first place, the Juniors 43, the Seniors 16 2-3 and the Freshmen, 1. On May 7 a triangular meet was held here which included Harbor Springs, Onaway, and Petoskey. May 14 brought Alpena here for a dual meet. The high spot of the year was reached at the regional track meet held in Cadillac on May 21.

In order to win a letter a boy must be a point winner in a regional meet. He is entitled to enter the regional meet if his marks in scholarship are at the proper standard. From the results of the interclass meets the following boys were chosen to make up the greater part of the track team: 120 yd. high hurdles, Jess Herrick, Dick Harbaugh; 440 yd. dash, Clyde Hall, Dick Gosselin; pole vault, Don Cooper, Jack Zaiger; mile run, Bob McMaster, Jack Zaiger; 200 yd. low hurdles, Don Cooper, Bob Brown; high jump, Jess Herrick, Bob Bursian, Herman Eddy; 100 yd. dash, Bob Bursian, Lee North; 220 yd. dash, Bob Bursian, Lee North; 880 yd. run, Louis Krusell, Herman Eddy; broad jump, Bob Cooper, Ed Stanley, Lee North.

SENIOR CLASS HISTORY

(Continued from Page 16)

was held at the Petoskey-Bay View Country Club and in the gymnasium. The room was decorated in nautical style, one of the features being a yacht, portholes and all.

Our last year of the so far successful expedition into the wilderness of P. H. S. was destined to be a series of hair-raising adventures, but our dauntless leader, Jim Garvin, led us through the dangerous spots. Next in command was Eleanore Wurst, and head of finance was Lottie Buděk.

The class counted among its great achievements the production of the "Lady of Letters." It was also particularly proud of its work in reviving the high school year book published by seniors, the PETOSEGAN. For several years the book had not been published, so the Class of '38 took upon itself the task of producing a better annual without the greater expense of previous years.

As the final social gesture of the year, the class was entertained by the juniors at the annual J-Hop, held in the gymnasium on May 6.



CLASS WILL

CLASS WILL

We, the graduating class of '38, hereby bequeath the following things to our less fortunate under-classmen to help them struggle through their remaining years in P. H. S. With lightened hearts and open minds, we have each decided to leave our most prized possession to the person who will need it most.

I, Grace Anderson, will my sweet disposition to Betty Machinsky.

- Marion Annable My ability to quote scripture to Oley Crawford.
 Leonard Barney My lengthy monologues to Eleanore Breseman.
 Tom Barton My smirk to some needy Freshman.
 Dorothy Behan My taxi-cab to someone who has no car.
 Wayne Booth My tall, lanky figure to Charles Johnson.
 Johanna Boyer My being jolly to Marjorie Paulus.
 Bethel Brecheisen . . My long walks home to Shirley Burnett.
 Louise Brill My neat coiffure to Myra Jordan.
 Dick Brown My "pull" with the Coach to my brother.
 Lottie Budek My library post to Miss Crothers.
 Mary Burek My dancing skill to Sophie Lapezynski.
 Stan Cadwallader . . My fashionable clothes to Clarence Jodway.
 Dick Cascaddan My many women admirers to someone who wants them.
 Art Chattaway My ability to keep training rules to Tom Adams.
 Vernon Cook My school-boy blushes to Coach Sebo.
 Kathryn Donnelly . . My permanent wave to Melva Cook.
 Alice Dunn My red hair to Mr. McDonald.
 Mary Feily My athletic skill to Bette Potts.
 Henry Fochtman . . My reckless driving to Kathryn Kelley.
 Irene Foltz My 4-H Club work to Veron Rohde.
 Jim Garvin My third floor balcony office to Fred Rose.
 Homer Golden My getting stuck to Herman Eddy.
 Theo Guillaume My dominating personality to Rosalie Moens.
 Gayle Hartung My faithfulness to Rachel Smith.
 Rachel Hawks My dignity to Jerry Fochtman.
 Ed Hoffman My pull with Miss Lombard to Mathilda Manthei.
 Georgia Houts My afternoons off to Jack Brill.
 Alton Howden My mustache to Roscoe Steen.
 Marguerite Kerwin . . My stateliness to Recitous Lee.
 Corinne King My ability to hold my man to Billie Trimble.
 Eleanore Konle My giggles to Betty Wakeman.
 Helen Koper My verbosity to Wilbert Kage.
 Kathryn Lancaster . . My curiosity to Barbara MacMillan.
 Pete Lites My appreciation of the girls to some woman hater.
 Waunetta McClellan . My poetic fancies to Elsie Swenor.

CLASS WILL

- Nancy Mania My boisterousness to Ed Billideau.
 Walter Masters My out of town interests to someone from Walloon.
 Virginia Meyer My success in love to Joyce Smith.
 Al Murner My horror of studying to Helen Keller.
 Ralph O'Dell My love of books to Dorothy Bremmeyr.
 Ruth Olsen My dignity to Ruth Starmer.
 Mildred Otto My artistic talent to Paul Hazelton.
 Ruth Owen My musical talent to Mr. Trickey.
 Jay Packard My saxophone to David Watt.
 Maxine Phillips My aloofness to Bill Zipp.
 Walter Pruss My dramatic tendency to George Bellaires.
 Thelma Reader My bookkeeping book to the junkman.
 Robert Reber My candid camera to Walter Winchell.
 Wayne Reber My figure skating art to Bozo, the Mule.
 Wilber Reber My ability to date to Ken Mollhagen.
 Phil Rehkopf My regards to Bette Wolff.
 Jean Rigg My mischievousness to Betty Lou Friend.
 Paul Ross My basketball technique to Bob Brown.
 Eileen Schmitt My quiet way to Janet Chattaway.
 Phyllis Schmitt My sense of humor to Pat Bowman.
 Alice Shinn My interest in Harbor Springs to Louise Glazer.
 Sterling Sluyter My love of teasing to Miss Farnsley.
 Bill Smith My compliments to the school.
 Dorothea Snyder My steady boy friend to Shirley Smith.
 Art Stevens My football position to a member of the 2nd team.
 Florence Stowe My shorthand books to anyone who will take them
 Gordon Swenor My stage managing to Ernest Sommers.
 Cathryn Switzer My recipe book to Bette Wolff.
 Thelma Tharp My ambition to a lazy Sophomore.
 Helen Tillotson My efforts to escape tardiness to Bob Miles.
 Betty Tompkins My argumentative ability to Al Linnell.
 Pat Vandervest My social leanings to some needy freshman.
 Lois Veith My place in the sextet to Bertha Mindel.
 Betty Jean Waite My stubbornness to Lillian Rose.
 Helen Walton My days "at home" to Madeline Shinn.
 Helen Wawryzniak My last name to Patricia Sik.
 Catherine Wells My fair complexion to Ann Burek.
 Marie Wilber My monkey-business to Gerry McKinley.
 Lois Winsor My million-dollar smile to Jim Barton.
 Evelyn Winter My demureness to Lily Murray.
 Eleanore Wurst My "catty" remarks to Wilma Kage.

SENIOR CLASS ELECTIONS

Artist.....	Mildred Otto	Most Bashful	Eileen Schmitt
Athlete (boy..)	Art Stevens	Most Gentlemanly.....	Tom Barton
Athlete (girl).....	Jean Rigg	Most Ladylike.....	Cathryn Switzer
Best Dancer (boy).....	Al Murner	Social Lion.....	Jay Packard
Best Dancer (girl).....	Mary Burek	Social Lioness.....	Dorothy Behan
Best Looking (boy).....	Dick Cascaddan	Most Original.....	Marie Wilber
Best Looking (girl).....	Louise Brill	Class Vamp.....	Ruth Olsen
Booster.....	Theo Guillaume	Gum Chewer.....	Lois Veith
Fickle.....	Maxine Phillips	Chatterbox.....	Alice Dunn
Grandstander.....	Phil Rehkopf	Fashion Plate.....	Corinne King
Most Ardent Lover.....	Wilber Reber	Most Talented.....	Phyllis Schmitt
Best Liked (boy).....	Peter Lites	Most Faithful (boy).....	Gordon Swenor
Best Liked (girl).....	Eleanore Wurst	Most Faithful (girl).....	Gayle Hartung
Drag with the Faculty.....	Jim Garvin	Class Cynic.....	Betty Jean Waite
Biggest Line.....	Leonard Barney	Class Clown.....	Bob Reber
Most Musical.....	Ruth Owen	Pest.....	Virginia Meyer
Peppiest.....	Lois Winsor	Idler.....	Art Chattaway



CLASS PROPHECY

CLASS PROPHECY

Given charge of writing the class prophecy, I was at a loss as how to read the future for the many students I did not know. After many weeks of work with the committee there was practically no progress made. At my room this night my anxiety increased till sleep carried me into oblivion and I don't remember a thing until Walt Pruss, shaking me, asked, "Do you want to know what has happened in the last ten years?" Looking up I saw Corrine King and Walt Pruss looking into a printed volume. I asked them what they were so interested in; and Corrine replied, "This is a book compiled by the Garvin Statistical Company for the past ten years as a reference for the Class of '38. "That must be interesting," I said, "because there are a few people I have often wondered about." Walt suggested that we start at the beginning and then we could see everybody. Turning to the first page we were confronted by the name of James Garvin. Jim it seems after having completed his college course, had returned to Petoskey and had taken over the city manager reins from P. T. Mitchell and was the confidential advisor to the P. H. S. faculty. Johanna Boyer besides being the secretary to the Superintendent was also Jim's secretary. Eleanore Wurst, living up to all expectations had succeeded Emily Post as the chief authority on etiquette. Ruth Owen, having finished her music course at the University of Chicago conservatory, was instructor of music at Vassar. Art Chattaway used his fine business head in making a success of selling polar pies to the Eskimos, and since business was so rushing he had Marguerite Kerwin taking care of the books. Grace Anderson, who used to be so quiet is now running a kindergarten for P. H. S. postgrads. She says the boys get the most amusement out of her chief assistant, Eleanore Konle. Helen Koper it seems had some kind of a pull with Miss Lombard, for she is now her chief assistant in translating new shorthand words. Kathryn Lancaster is in charge of the after-school typing class. Wilber Reber has made a name for himself by his originality; the new dance craze which has struck the nation is his own masterpiece the "Hot Coconut." Maxine Phillips is heard over the radio every night from seven to eight with her after-dinner dance band. Pete Lites is running a flying night club which flies to Boyne City, Charlevoix and Harbor Springs each Saturday night. Bill Smith is in charge of the baby-checking department for Pete; and he amuses the infants with his facial expressions. Alice Shinn finally wrote something to the point for she has just completed her book called "What I Don't Know," which upon examination was found to contain all blank

pages. Bob Reber, the engineering genius of the day, has just finished his plans for the escalators for the P. H. S. and his spare time is spent as assistant instructor in Chemistry in Kegomic Tech. Ruth Olsen was acclaimed "Miss America 1948," at Kegomic and is apparently as beautiful as ever. Virginia Meyer has finally married her doctor. Phyllis Schmitt is America's most photographed child and poses as a model in New York City. Louise Brill is running a men's haberdashery in N. Y. city, connected with the French firm operated by Stan Cadwallader, who is still in active service as a "floor walker." Phil Rehkopf is Vassar's educator in the recreational department. Theo Guillaume is running a YWCA in Chicago. Art Stevens is northern Michigan's No. 1 ladies' man and is causing plenty of heart throbs yet. Alice Dunn has married an accountant and is living down state. Walter Masters, who is Chicago's greatest criminal lawyer, is planning on returning to Walloon Lake to practice law; he says the city isn't busy enough for him. Mary Burek is managing a hair dressing shop in the back part of the Palace Cigar Store. Mary Feily has invented a new flavor for gum, and has her own factory at Conway. Richard Brown, after attending the Coaches School run by Steve Sebo for 8 years, has returned to guide P. H. S.'s teams to victory, assisted by Paul Ross. Lottie Budek is a full fledged librarian and is in charge of the Library at Bay View. Nancy Mania is the wife of a bartender and is his official bouncer. Betty Jean Waite is the leader of the Radical group in congress where she recently set a record for filibustering for two straight months till congress accepted her bill without any amendments. Cathryn Switzer is a prominent Republican and is Speaker of the House of Representatives. Leonard Barney is President of the High School Boys Pool Room Owners Association. Irene Foltz is the chief milk maid at the Foltz Dairies which derive their milk from the mechanical cow which was invented by Gordon Swenor who lives nearby on a semi-scientific farm. Georgia Houts is a waitress at a lunch counter in Cheboygan. Mildred Otto, the painter, has lately had a cartoon in the Hi-Light, the paper which has supplanted the Petoskey Evening News and which had Lois Winsor as circulator. Marion Annable is a traveling Evangelist in the Orient. Marie Wilber having finished a concert tour of the U. S. A., returns to work in Hollywood co-starring with Dick Cascaddan, who, while recently working as a life guard at Santa Monica Beach, was discovered by Ralph O'Dell, of the O'Dell super-production pictures. Sterling Sluyter and Vernon Cook are in Washington pending

CLASS PROPHECY

a Supreme Court investigation of their income tax evasions and of the Girls Seminary they were operating near Clarion. Jean Rigg is the leader of New York's upper 400; she spends her summers at Bay Shore. Dorothea Snyder gave up a promising business career for housekeeping; we think love was the primary motive. Hank Fochtman is Michigan's Chinchilla King, raising hairless hares on his Hare Ranch near Walloon Lake. Helen Tillotson finally broke her silence but only with her violin, since she is heard over the Chase & Sanborn coffee hour. Information concerning Helen Wawryzniak is scarce; we only found out she was Ballerina in King Oscar's court in Sweden. Pat Vandervest is a mannequin in the La Parade shop in Paris which is owned by Helen Walton and Bethel Brecheisen who is also the head seamstress. Betty Tompkins is manager of an Ice Cream shop in Petoskey for the Northern Creamery. Al Murner has been selected the No. 3 best dressed man in the world; he is also the official advisor to Mr. Bond. Catherine Wells has married a rich coal magnate in Pennsylvania. Wayne Reber has just completed his tour of Spain, fighting bulls and breaking the hearts of the beautiful senoritas. Thelma Tharp is married and Eileen Schmitt seems destined to be the only spinster in the class not because of a lack of offers but because she can find none to measure up to her standards. Thelma Reader and Evelyn Winter have founded a home for Old P. H. S. derelicts. Homer Golden is president of the Golden Super

Service Incorporated. Katherine Donnelly is a chorus girl in Hollywood. Wayne Booth is a model infantry officer at West Point. Gayle Hartung has been married for some time to a semi-scientific farmer who lives a little way out of town. Al Howden received his Bachelor of Arts degree from Wabmemece University which entitles him to be a bachelor the rest of his life. Lois Veith is running the March Inn at Walloon Lake. Jay Packard has been the last decade's best composer of unwritten music which his own orchestra plays over the radio every night. Wau-netta McClellan has distinguished herself in research work in the West. Florence Stowe and Rachel Hawkes are planning the second big game hunt in Africa in which they are the leaders. Dorothy Behan still is hopeful and waiting for the right man to come along. Ed Hoffman is still going steady with two girls and can't make up his mind which is to be Mrs. Hoffman, Johanna or Helen. Near the end of the volume came the information that Walter Pruss had distinguished himself in the chemical world by extracting Peach Brandy from sawdust; that Corinne King had been selected No. 1 best dressed lady and incidentally married a lawyer; and that Tom Barton was head janitor at the Louvre, his chief duty consisting in keeping the dust off the Venus de Milo. Suddenly a loud noise broke the atmosphere, mechanically I rolled over and shut off the alarm, then I realized it had all been a dream.

But here was a solution to my problem.

HUMOR

Mr. McDonald: "Name five great European powers."

Pete Lites: "Steam, water, electricity, horses and windmills."

Jess: "Well, I got a real kick out of kissing June last night."

Art: "Any more than usual?"

Jess: "Yes, the old man caught me."

A paper that Bob Reber handed his English teacher ended thus: "And so he died and lived happily ever after."

Pat: "I almost died laughing at you and your wife quarreling last night."

Mike: "Me too, and when she threw the ax at me, I thought I'd split."

"Dear Teacher, Please excuse Floyd for being absent yesterday from school 'cause I washed his winter underwear and it won't happen again."

Floyd's Mother.

Mrs. Bond: "Oh darling, I'm so glad you're home. We heard that some idiot had fallen off the breakwater and I was sure it was you."

Business Service:

I do beauty work on the side. Come and get your face overhauled for half the usual cost. Carbon cleaned out and valves ground cheaply. Ye Beauty Shoppe.

Lost your wife? Read the Marriage Column and pick another melon.

Absent Minded Prof. (gazing through revolving doors) "Dear me, I can't remember whether I was coming in or going out."

"Oh teacher, look!" cried the little girl on her visit to the country. "There's a duck and it walks like it had just got out of a rumble seat."

Love may be blind, but the night watchman isn't.

1938 P E T O S E G A N

AUTOGRAPHS

